

# NEW HAVEN CHARGERS

## WOMEN'S BASKETBALL

### DAN RUEDE

Assistant Director of Athletics / Strategic Communications  
Charger Gym, 300 Boston Post Road, West Haven, CT 06516  
O: 203.932.7025 | C: 203-535-9503  
druede@newhaven.edu | www.NewHavenChargers.com

### 2023-24 SCHEDULE/RESULTS

OVERALL: 5-5 | NE10: 1-5

#### NOVEMBER

|      |    |                  |                 |
|------|----|------------------|-----------------|
| Fri. | 10 | vs Wilmington    | W, 81-21        |
| Sat. | 11 | at Goldey-Beacom | W, 85-57        |
| Wed. | 15 | at Bentley *     | L, 48-59        |
| Tue. | 21 | <b>PACE *</b>    | <b>L, 43-46</b> |
| Wed. | 29 | at Assumption *  | L, 41-70        |

#### DECEMBER

|      |    |                                     |                 |
|------|----|-------------------------------------|-----------------|
| Sat. | 2  | <b>SOUTHERN NEW HAMPSHIRE *</b>     | <b>L, 60-65</b> |
| Wed. | 5  | <b>ADELPHI *</b>                    | <b>L, 49-56</b> |
| Sun. | 10 | <b>GEORGIAN COURT</b>               | <b>W, 74-45</b> |
| Sat. | 30 | <b>UNIV OF DISTRICT OF COLUMBIA</b> | <b>W, 67-63</b> |

#### JANUARY

|      |    |                               |                  |
|------|----|-------------------------------|------------------|
| Wed. | 3  | at Saint Michael's *          | W, 61-45         |
| Sat. | 6  | at American International *   | 1:30 p.m.        |
| Wed. | 10 | <b>SOUTHERN CONNECTICUT *</b> | <b>5:30 p.m.</b> |
| Sat. | 13 | <b>SAINT ANSELM *</b>         | <b>1:30 p.m.</b> |
| Tue. | 16 | at Franklin Pierce *          | 5:30 p.m.        |
| Sat. | 20 | <b>SAINT ROSE *</b>           | <b>1:30 p.m.</b> |
| Wed. | 24 | at Pace *                     | 5:30 p.m.        |
| Sat. | 27 | <b>BENTLEY *</b>              | <b>1:30 p.m.</b> |
| Tue. | 30 | <b>ASSUMPTION *</b>           | <b>5:30 p.m.</b> |

#### FEBRUARY

|      |    |                                 |                  |
|------|----|---------------------------------|------------------|
| Sat. | 3  | at Southern New Hampshire *     | 1:30 p.m.        |
| Wed. | 7  | at Adelphi *                    | 5:30 p.m.        |
| Sat. | 10 | <b>SAINT MICHAEL'S *</b>        | <b>1:30 p.m.</b> |
| Tue. | 13 | at Southern Connecticut *       | 5:30 p.m.        |
| Sat. | 17 | <b>AMERICAN INTERNATIONAL *</b> | <b>1:30 p.m.</b> |
| Wed. | 21 | at Saint Anselm *               | 5:30 p.m.        |
| Sat. | 24 | at Saint Rose *                 | 1:30 p.m.        |
| Tue. | 27 | <b>FRANKLIN PIERCE *</b>        | <b>5:30 p.m.</b> |

#### MARCH

|            |    |                                |     |
|------------|----|--------------------------------|-----|
| Fri.       | 1  | NE10 Championship First Round  | TBD |
| Sun.       | 3  | NE10 Championship Quarterfinal | TBD |
| Thu.       | 7  | NE10 Championship Semifinal    | TBD |
| Sun.       | 10 | NE10 Championship Final        | TBD |
| Mar. 15-18 |    | NCAA East Region Championship  | TBD |
| Mar. 25-29 |    | NCAA Final Eight               | TBD |

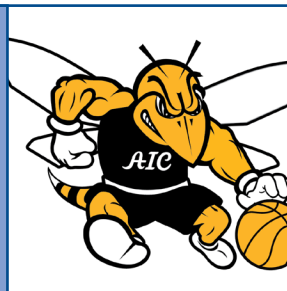
\* Northeast-10 Conference game  
Home games in **BOLD CAPS** played at Charger Gymnasium



**NEW HAVEN (5-5, 1-5 NE10)**  
**CHARGERS**

### AT A GLANCE

|                                       |                            |
|---------------------------------------|----------------------------|
| Opening Tip .....                     | 1:30 p.m.                  |
| Location .....                        | Springfield, Mass.         |
| Venue .....                           | Henry Butova Gymnasium     |
| Capacity .....                        | 2,500                      |
| Live Video .....                      | NE10Now.tv                 |
| Live Stats .....                      | AICYellowJackets.com       |
| All-Time Series .....                 | New Haven 24-22            |
| Active Streak .....                   | W1                         |
| Last Meeting .....                    | New Haven 70-65 (2.4.23)   |
| First Meeting .....                   | New Haven 76-68 (12.13.79) |
| Buff vs. American International ..... | 6-2                        |



**AMERICAN INT'L (8-3, 3-3 NE10)**  
**YELLOW JACKETS**

### PROJECTED NEW HAVEN STARTERS

**1 GABRIELLE STICKLE**  
SR • 5-6 • GUARD  
SYRACUSE, N.Y.

| PPG | RPG | AST | MIN  |
|-----|-----|-----|------|
| 5.6 | 3.4 | 43  | 35.3 |



#### NOTES:

- Started all 10 games this season
- Dished out a career-high 8 assists against Goldey-Beacom and matched that vs Georgian Court
- Currently 2nd in the NE10 in assists per game - 4.3
- Currently 7th in the NE10 in steals per game - 1.9

**2 EVEANI OKWUOSA**  
FR • 5-9 • GUARD  
NORTH HAVEN, CONN.

| PPG | RPG | STL | MIN  |
|-----|-----|-----|------|
| 3.7 | 2.3 | 12  | 18.8 |



#### NOTES:

- First career start came against SNHU
- Second on the team with 12 steals
- First career double figure game 10 points at home vs UDC - named NE10 Rookie of the Week following that game

**5 CHARLOTTE BASSETT**  
JR • 5-6 • GUARD  
GLASTONBURY, CONN.

| PPG | RPG | AST | MIN  |
|-----|-----|-----|------|
| 7.9 | 3.5 | 15  | 24.1 |

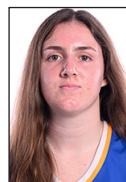


#### NOTES:

- Has scored in double figures three times
- Scored a career-high 22 points at home vs Georgian Court
- Career-high 7 rebounds vs Adelphi

**14 LINDSAY HOGAN**  
SO • 6-1 • GUARD/FORWARD  
BAYVILLE, N.J.

| PPG  | RPG | AST | MIN  |
|------|-----|-----|------|
| 12.7 | 5.6 | 15  | 32.0 |



#### NOTES:

- Opened up the season scoring a career-high 30 points against Wilmington - shot 10-of-11, including 5-5 3pt FG
- Named NE10 Player of the Week - Nov 13
- Career-high 12 rebounds in home win vs Georgian Court

**34 AURORA DESHAIES**  
GR • 6-1 • FORWARD  
SYRACUSE, N.Y.

| PPG  | RPG | BLK | MIN  |
|------|-----|-----|------|
| 12.2 | 9.7 | 5   | 26.2 |



#### NOTES:

- Currently 1st in rebounding in the NE10
- Has scored in double figures in six of the 10 games
- Has five double doubles on the season - most in NE10 and 25th most in NCAA D2

### PUT ME IN COACH I'M READY TO PLAY (FIRST OFF THE BENCH)

**Makaela Johnson**  
GR • 5-9 • FORWARD  
HAMDEN, CONN.

**23**

**Bianca Pendleton**  
JR • 6-0 • FORWARD  
ACCOKEEK, MD.

**32**

**Nayeli Dowding**  
JR • 5-6 • GUARD  
BALDWIN, N.Y.

**10**

**Katelyn Simpson**  
FR • 5-9 • GUARD  
BALDWIN, N.Y.

**11**



# GAME 11: NEW HAVEN AT AMERICAN INTERNATIONAL

## 2022-23 NEW HAVEN CHARGERS NUMERICAL ROSTER

| ## | Name                 | Cl. | Po. | Ht. | Hometown / High School / Last School                     | Pronunciation Guide          |
|----|----------------------|-----|-----|-----|--|------------------------------|
| 1  | Gabrielle Stickle    | Sr. | G   | 5-6 | Syracuse, N.Y. / Jamesville-Dewitt                       |                              |
| 2  | Eveani Okwuosa       | Fr. | G   | 5-9 | North Haven, Conn. / Hamden Hall                         | Eh-van-i Oh-kas-ah           |
| 3  | Becca Townes         | Gr. | G   | 5-8 | Newburgh, N.Y. / Our Lady of Lourdes / Saint Rose        |                              |
| 5  | Charlotte Bassett    | Jr. | G   | 5-6 | Glastonbury, Conn. / Glastonbury                         |                              |
| 10 | Nayeli Dowding       | Jr. | G   | 5-6 | Baldwin, N.Y. / Baldwin / Hartford                       | Ny-yell-ee                   |
| 11 | Katelyn Simpson      | Fr. | G   | 5-9 | Baldwin, N.Y. / Baldwin                                  |                              |
| 12 | Sabira Ahayeva       | Jr. | G   | 5-7 | Minsk, Belarus / Minsk #27 / Dawson Community College    | Sah-beer-ah<br>Ah-hah-yay-va |
| 14 | Lindsay Hogan        | So. | G/F | 6-1 | Bayville, N.Y. / Locust Valley                           |                              |
| 15 | Marigona Bacaliu     | Gr. | G   | 5-8 | Worcester, Mass. / Putnam Science Acad. / Concordia (NY) |                              |
| 21 | Sytlianna Mantzouris | Fr. | G   | 5-7 | Albany, N.Y. / Albany Academy                            |                              |
| 23 | Makaela Johnson      | Gr. | F   | 5-9 | Hamden, Conn. / Hamden / Saint Rose                      | Styli                        |
| 32 | Bianca Pendleton     | Jr. | F   | 6-0 | Accokeek, Md. / New Hope Academy                         |                              |
| 34 | Aurora Deshaies      | Gr. | F   | 6-1 | Syracuse, N.Y. / Bishop Ludden                           | deh-SHAYS                    |
| 44 | Merit Innocent       | Fr. | F   | 6-2 | Delta State, Nigeria / Busche Academy                    |                              |

**Head Coach:** Debbie Buff (Cortland) – Fifth Season

**Assistant Coach:** Jason Dunne (Hartford aven '19) - First Season

**Graduate Assistant Coach:** Alex Irizarry (UConn '23) - First Season



**GABRIELLE STICKLE**

**1** SR | Guard



**EVEANI OKWUOSA**

**2** FR | Guard



**BECCA TOWNES**

**3** GR | Guard



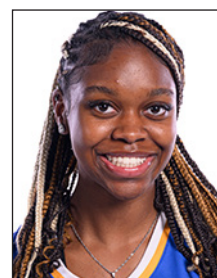
**CHARLOTTE BASSETT**

**5** JR | Guard



**NAYELI DOWDING**

**10** JR | Guard



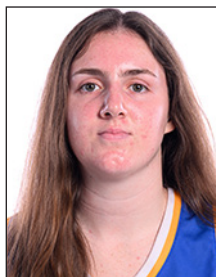
**KATELYN SIMPSON**

**11** FR | Guard



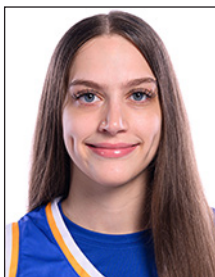
**SABIRA AHAYEVA**

**12** JR | Guard



**LINDSAY HOGAN**

**14** SO | Guard/Forward



**MARY BACALIU**

**15** GR | Guard



**SYTLIANNA MANTZOURIS**

**21** FR | Guard



**MAKAELA JOHNSON**

**23** GR | Forward



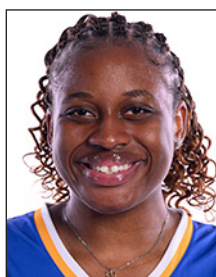
**BIANCA PENDLETON**

**32** JR | Forward



**AURORA DESHAIES**

**34** GR | Forward



**MERIT INNOCENT**

**44** Fr | Forward



**DEBBIE BUFF**

**HC** Fifth Season





VS



TALE OF THE TAPE

|          |                        |          |
|----------|------------------------|----------|
| 5-5, 1-5 | OVERALL RECORD         | 8-3, 3-3 |
| W3       | CURRENT STREAK         | L2       |
| 60.9     | POINTS PER GAME        | 69.2     |
| 52.7     | OPP POINTS PER GAME    | 62.0     |
| +8.2     | SCORING MARGIN         | +7.2     |
| .415     | FIELD GOAL PCT         | .409     |
| .374     | OPP FIELD GOAL PCT     | .383     |
| .309     | 3-POINT FG PCT         | .325     |
| .246     | OPP 3-POINT FG PCT     | .345     |
| 5.0      | 3PT MADE/GAME          | 6.7      |
| .659     | FREE THROW PCT         | .721     |
| 38.5     | REBOUNDS PER GAME      | 35.8     |
| 33.0     | OPP. REBOUNDS PER GAME | 36.5     |
| +5.5     | REBOUND MARGIN         | -0.7     |
| 14.1     | TURNOVERS PER GAME     | 13.6     |
| -0.1     | TURNOVER MARGIN        | +3.5     |
| 12.3     | ASSISTS PER GAME       | 12.8     |
| 6.7      | STEALS PER GAME        | 10.5     |
| 2.6      | BLOCKS PER GAME        | 5.1      |

STATISTICAL LEADERS

SCORING

| NEW HAVEN         | AMERICAN INT'L |
|-------------------|----------------|
| Hogan.....12.7    | Lee.....15.7   |
| Deshaies.....12.2 | Boyle.....12.5 |

REBOUNDING

| NEW HAVEN        | AMERICAN INT'L |
|------------------|----------------|
| Deshaies.....9.7 | Lee.....9.1    |
| Hogan.....5.6    | Porter.....8.5 |

ASSISTS

| NEW HAVEN            | AMERICAN INT'L  |
|----------------------|-----------------|
| Stickle.....43       | Robinson.....38 |
| Hogan/Bassett.....15 | Martinez.....37 |

STEALS

| NEW HAVEN      | AMERICAN INT'L  |
|----------------|-----------------|
| Stickle.....17 | Lee.....24      |
| Okwuosa.....12 | Robinson.....24 |

BLOCKS

| NEW HAVEN     | AMERICAN INT'L |
|---------------|----------------|
| Okwuosa.....8 | Porter.....32  |
| Hogan.....6   | Lee.....9      |

WHAT'S ON TAP

Coming off a road win at Saint Michael's, its first NE10 win and third-straight, the New Haven women's basketball team looks to keep the momentum on Saturday when they head to the Bay State to meet the American International Yellow Jackets in a conference showdown.

SCOUTING NEW HAVEN

A conference leading, and top-25 in the nation, five double doubles from graduate post player Aurora Deshaies and she is one of the key leaders for the Chargers, averaging 12.2 points and a conference-high 9.7 rebounds. Also on a bit of a hot streak is junior guard Charlotte Bassett who has scored in double figures in three of the last five games, including a career-high 22 points against Georgian Court. Her recent success has also moved her up the scoring column, currently third on the team with an average of 7.9 ppg. Atop the trio of leading scorers is sophomore Lindsay Hogan who has helped fill the void left by the loss of two of the top three scorers from a year ago as she is averaging 12.7 points across the first 10 games and leads the Chargers with 20 three point field goals. To start the season, fifth-year head coach Debbie Buff turned to the experience of senior Gabrielle Stickle to run the offense and she hasn't disappointed as she has dished out 43 assists and is second in the NE10 with 4.3 per game. Included for Stickle is a pair of games with a career-high eight assists versus Goldey-Beacom and Georgian Court. Despite the 5-5 overall record, New Haven is outscoring opponents by an average of 8.2 points per game, scor-

ing 80+ in the first two games of the season, after hitting that scoring mark just once all of last season. All combined, the Chargers are shooting 41.5 percent (236-569) as a team, led by Deshaies who is shooting 48.6 percent from the field (54-111).

SCOUTING AMERICAN INTERNATIONAL

Looking to break a two-game skid, both conference losses, the Yellow Jackets welcome New Haven after dropping a one-point decision to Saint Rose this past Wednesday. Despite those two losses, the Yellow Jackets lead the NE10 in points per game, putting up an average of 69.2, while outscoring their opponents by more than seven points per game. Individually, four Yellow Jackets are averaging in double figures led by Briana Lee who enters the weekend third in the NE10 in scoring with her 15.7ppg average, while she also leads the Yellow Jackets in rebounding (9.1 per game) and steals (24). Her 9.1 rpg is also third most in the NE10. Following her in the scoring column are a pair of 12 point scorers with Ruzgar Christina Boyle adding 12.5 ppg and Kayla Robinson chipping in 12.2 ppg. Robinson also leads the Yellow Jackets with 38 assists and is tied with Lee in the steals column with 24. Rounding out the four leading scorers is Tia-Marie Martinez who is averaging 10.8 ppg.

SERIES HISTORY VS AIC

- New Haven and American International meet for the 47th time in the history of the two programs on Saturday
- The Chargers hold a 24-22 record in the previous 46 games, having



GAME 11: NEW HAVEN AT AMERICAN INTERNATIONAL

- won eight of the last 10 against the Yellow Jackets
- AIC's most successful part of the series came in the early 1990's and then again when the series returned in the early 2000's with the Yellow Jackets winning 11 straight.
  - Last season, the Chargers and Yellow Jackets split the home-and-home series with each team winning on its home court

NEXT TIME OUT

New Haven will make its debut in West Haven since the clock struck midnight on New Year's Eve when they next take the floor, welcoming crosstown rival Southern Connecticut State University to the Hazell Athletic Center for the first half of the Battle for the Elm City. Tipoff against the Owls is slated for 5:30 p.m. in the first part of a doubleheader with the men's team. All of the action from Charger Gymnasium will be available live on the Chargers Sports Network on NE10Now.tv

HONOR ROLL

After opening the season with an average of 26 points across the two games of the Goldey-Beacom Season Tip-Off Tournament, Lindsay Hogan picked up the first Northeast-10 Player of the Week accolades that were doled out by the league office.

HONOR ROLL PART DEUX

Following up her first collegiate double figure scoring game, North Haven, Conn. native Eveani Okwuosa nabbed her first collegiate award when she garnered NE10 Rookie of the week. Okwuosa, who earned a spot in the starting lineup to start the month of December, closed out the first double digit performance of her career with 10 points as the Chargers scored their second-straight victory, handing UDC its third-straight loss after starting the season 11-0. The freshman guard finished the game shooting 4-of-5 from the field, with a three pointer, and 1-of-2 at the line. In addition to her scoring, she added a pair of steals, a pair of blocks and pulled down a trio of rebounds.

HOGAN'S MY HERO

There will be no sophomore slump as Lindsay Hogan came out firing in 2023-24, opening up the season with a career-high 30 points in the win over Wilmington and following that up with 22 more against Goldey-Beacom to average 26 points across the opening week-end sweep. It wasn't a laboring effort for Ho-

gan as she connected on 72 percent of her field goal attempts (18-of-25), including 82 percent from outside the arc (9-of-11), while also going a perfect 7-of-7 from the free throw line. In addition, she added seven rebounds, two assists, a block and four steals.

ASCENDING THE PEAK

Graduate forward Aurora Deshaies entered the season with a milestone mark on her radar and she hit a bullseye becoming the 22nd player all-time to break the 1,000 point plateau, doing so in the first half of the NE10 opener at Bentley. Deshaies will continue to climb the ranks as with 31 more points she will take over 19th all-time. Deshaies became the most recent Charger to join the list since Micah Wormack who closed out her career with 1,022 points.

STICK WITH STICKLE

After spending the last two seasons as a role player off the bench, senior point guard Gabrielle Stickle had her number called to start the new season and she proved her worth early on. The Glastonbury, Conn. native has dished out 43 assists on the season, putting up five or more in four games, including a career-high eight in the win over Goldey-Beacom. She then matched that career-high of eight just before the holiday break against Georgian Court. Her 4.3 assist per game average is currently second best in the Northeast-10.

BASSETT IS A HOUND

Junior guard Charlotte Bassett has been sniffing out points as of late, scoring her first ever game in double figures against Southern New Hampshire and her first ever 20+ performance with a career-high 22 in the home win over Georgian Court. Over the last five game stretch, which includes those two games, Bassett is averaging 12.6 points per game and shooting 55.6 percent on 25-of-45.

DOUBLE TROUBLE

Currently leading the Northeast-10 in double doubles with five, graduate post player Aurora Deshaies currently leads the NE10 with 9.7 rebounds per game, just shy of averaging a double double of the season. Prior to the Chargers win at Saint Michael's, Deshaies was riding a streak of three-straight games with a double double, while two of her five have come in NE10 play.

QUADTASTIC

In the 47-year history of New Haven wom-

CHARGERS RECORD WHEN...

|         |     |
|---------|-----|
| Overall | 5-5 |
| Home    | 2-3 |
| Away    | 2-2 |
| Neutral | 1-0 |

BY MONTH

|          |     |
|----------|-----|
| November | 2-3 |
| December | 2-2 |
| January  | 1-0 |
| February | 0-0 |
| March    | 0-0 |

BY DAYS OF THE WEEK

|           |     |
|-----------|-----|
| Monday    | 0-0 |
| Tuesday   | 0-1 |
| Wednesday | 1-3 |
| Thursday  | 0-0 |
| Friday    | 1-0 |
| Saturday  | 2-1 |
| Sunday    | 1-0 |

CLOSE GAMES

|   |     |
|---|-----|
| New Haven leads with 5:00 left in game  | 5-1 |
| New Haven trails with 5:00 left in game | 0-4 |
| Tied with 5:00 left to play             | 0-0 |
| Decided by five points or less          | 1-2 |
| Decided by 6-10 points                  | 0-1 |
| Games decided by 11-plus points         | 4-2 |
| Overtime                                | 0-0 |

OFFENSIVE OUTPUT

|                                   |     |
|-----------------------------------|-----|
| New Haven scores less than 50 pts | 0-4 |
| New Haven scores 50-59 pts        | 0-0 |
| New Haven scores 60-69 pts        | 2-1 |
| New Haven scores 70-79 pts        | 1-0 |
| New Haven scores 80 or more pts   | 2-0 |

DEFENSIVE OUTPUT

|                                  |     |
|----------------------------------|-----|
| Opponent scores less than 50 pts | 3-1 |
| Opponent scores 50-59 pts        | 1-2 |
| Opponent scores 60-69 pts        | 1-1 |
| Opponent scores 70-79 pts        | 0-1 |
| Opponent scores 80 or more pts   | 0-0 |

NEW HAVEN FROM THE FIELD

|                                    |     |
|------------------------------------|-----|
| New Haven shoots below 30%         | 0-0 |
| New Haven shoots 30-40%            | 0-5 |
| New Haven shoots 40-50%            | 4-0 |
| New Haven shoots above 50%         | 1-0 |
| New Haven shoots higher % than opp | 5-2 |
| New Haven shoots lower % than opp  | 0-3 |
| New Haven shoots same % as opp     | 0-0 |

REBOUNDING

|                          |     |
|--------------------------|-----|
| Outrebounded opponent    | 4-3 |
| Outrebounded by opponent | 1-1 |
| Rebounds are equal       | 0-1 |

MISCELLANEOUS

|  |     |
|--|-----|
| Leading at halftime                        | 5-1 |
| Trailing at halftime                       | 0-4 |
| Tied at halftime                           | 0-0 |
| Has two players or less in double figures  | 0-5 |
| Has three players in double figures        | 4-0 |
| Has four or more players in double figures | 1-0 |
| Commit same or less TO than opp            | 3-0 |
| Commit more TO than opp                    | 2-5 |
| Games following a win                      | 3-1 |
| Games following a loss                     | 1-4 |
| Makes more or same 3FGs than opp           | 4-2 |
| Makes less 3FGs than opp                   | 1-3 |
| Makes more or same FTs than opp            | 4-1 |
| Makes fewer FTs than opp                   | 1-4 |

CHARGERS BY THE NUMBERS

| 10+ POINT GAMES     | 23-24 | NE10   | CAREER      |
|---------------------|-------|--------|-------------|
| Bacaliu             | --    | --     | 2           |
| Bassett             | 3     | 1      | 3           |
| Deshaies            | 5     | 2      | 58          |
| Dowding             | 4     | 2      | 3           |
| Hogan               | 5     | 3      | 8           |
| Johnson             | 2     | --     | 2           |
| Okwuosa             | 1     | --     | 1           |
| Pendleton           | 1     | 1      | 3           |
| Stickle             | 1     | 1      | 2           |
| 20+ POINT GAMES     | 23-24 | NE10   | CAREER      |
| Bassett             | 1     | --     | 1           |
| Deshaies            | --    | --     | 7           |
| Hogan               | 2     | --     | 3           |
| 30+ POINT GAMES     | 23-24 | NE10   | CAREER      |
| Deshaies            | --    | --     | 1           |
| Hogan               | 1     | --     | 1           |
| 10+ REB GAMES       | 23-24 | NE10   | CAREER      |
| Deshaies            | 6     | 3      | 47          |
| Hogan               | 1     | --     | 1           |
| Johnson             | 1     | --     | 1           |
| 20+ REB GAMES       | 23-24 | NE10   | CAREER      |
| Deshaies            | --    | --     | 1           |
| 5+ ASSIST GAMES     | 23-24 | NE10   | CAREER      |
| Stickle             | 4     | 1      | 4           |
| 10+ ASSIST GAMES    | 23-24 | NE10   | CAREER      |
|                     | --    | --     |             |
| 5+ BLOCK GAMES      | 23-24 | NE10   | CAREER      |
|                     | --    | --     |             |
| 5+ STEAL GAMES      | 23-24 | NE10   | CAREER      |
| Bacaliu             | --    | --     | 1           |
| Stickle             | 1     | --     | 1           |
| DOUBLE-DOUBLE (P/R) | 23-24 | NE10   | CAREER      |
| Deshaies            | 5     | 2      | 33          |
| Johnson             | 1     | --     | 1           |
| POINTS LEADER       | 23-24 | NE10   |             |
| Bassett             | 1     | --     |             |
| Deshaies            | 3     | 2      |             |
| Hogan               | 5     | 3      |             |
| Pendleton           | 1     | 1      |             |
| Stickle             | 1     | 1      |             |
| REBOUNDS LEADER     | 23-24 | NE10   |             |
| Deshaies            | 6     | 3      |             |
| Hogan               | 2     | 2      |             |
| Johnson             | 2     | 1      |             |
| GAMES STARTED       | 23-24 | CAREER | CONSECUTIVE |
| Bacaliu             | --    | 12     | --          |
| Bassett             | 6     | 6      | 3           |
| Deshaies            | 10    | 85     | 10          |
| Dowding             | 2     | 2      | --          |
| Hogan               | 10    | 24     | 10          |
| Johnson             | 7     | 7      | --          |
| Okwuosa             | 5     | 5      | 5           |
| Stickle             | 10    | 14     | 10          |

en’s basketball three players have surpassed 1,000 career rebounds and this season Aurora Deshaies has the chance to become just the fourth ever to reach the feat. Entering Saturday against UDC, Deshaies stands at 858 career rebounds with an average of 9.8 per game. She also just recently joined the top-10 in program history and with her 12 against Adelphi in early December took over sixth place all-time from Tristan Jackson who pulled down 824 boards from 2003-07. She now needs 47 to take over fifth place from Sonja Beamon.

PROTECT THE ROCK

The most damaging thing for a team’s offense is turning over the ball. Early in the 2023-24 season, the Chargers are doing a fantastic job of protecting the rock, averaging 14.2 turnovers across the first nine games, including a season-low of nine against Goldey-Beacom, and again against Georgian Court. On the flip side, the Chargers are forcing their opponents into 14.1 turnovers per game and taking advantage of those miscues by scoring 135 points off of those turnovers, while surrendering just 115 points off of their miscues.

TRANSFER POTENTIAL

Head Coach Debbie Buff added a pair of transfers to bolster the Chargers roster in 2023-24 with the addition on Makaela Johnson and Nayeli Dowding. Johnson comes to New Haven from fellow NE10 opponent Saint Rose after averaging 10.6 points and 4.9 rebounds last season. Dowding makes the transition from Hartford where, as a sophomore last season, she averaged 8.3

points and 2.5 rebounds per game.

ALWAYS ON TARGET

Graduate forward Aurora Deshaies has been ascending the all-time scoring ranks mostly due in part to her uncanny ability to score the rock. The Syracuse, N.Y. native enters this season shooting .570 for her career (429-752) after posting a career-high 60.3 shooting percentage last season which ranked sixth best in all of NCAA Division II. Had Deshaies not returned for her fifth year, she would’ve graduated as the all-time leader in field goal percentage with Amanda Freeman currently leading that category at 52.1% (351-674) from 2002-06.

LEADER THRU AND THRU

Head coach Debbie Buff recently announced the Chargers solo captain for the 2023-24 season with graduate forward Aurora Deshaies earning the distinction for the second-straight season. Last season, Deshaies shared the honor with Camryn DeBose.

BEST OF THE BEST

After a decorated career on the court at New Haven, Camryn DeBose continues to make headlines for the New Haven women’s basketball team. Named the Northeast-10’s Woman of the Year at the annual awards banquet last June, DeBose has been named as one of the Top-30 finalists for the NCAA Woman of the Year award which will be announced at the NCAA’s annual convention in January in Arizona.

NEW FACES OF THE PROGRAM

In addition to the two transfers (Johnson

| TEAM STATISTICS       |           |         |        |         |           |             |            |
|-----------------------|-----------|---------|--------|---------|-----------|-------------|------------|
|                       | All Games | Home    | Away   | Neutral | Non-Conf. | Conf. Games | Postseason |
| RECORD                | 5-5       | 2-3     | 2-2    | 1-0     | 4-0       | 1-5         | -          |
| SCORING               | 609       | 293     | 235    | 81      | 307       | 302         | -          |
| Points per game       | 60.9      | 58.6    | 58.8   | 81.0    | 76.8      | 50.3        | -          |
| Scoring margin        | +8.2      | +3.6    | +1.0   | +60.0   | +30.3     | -6.5        | -          |
| FIELD GOALS-ATT       | 236-569   | 111-274 | 95-245 | 30-50   | 117-236   | 119-333     | -          |
| Field goal pct        | .415      | .405    | .388   | .600    | .496      | .357        | -          |
| 3 POINT FG-ATT        | 50-162    | 23-84   | 21-70  | 6-8     | 23-62     | 27-100      | -          |
| 3-point FG pct        | .309      | .274    | .300   | .750    | .371      | .270        | -          |
| 3-pt FG made per game | 5.0       | 4.6     | 5.3    | 6.0     | 5.8       | 4.5         | -          |
| FREE THROWS-ATT       | 87-132    | 48-70   | 24-41  | 15-21   | 50-72     | 37-60       | -          |
| Free throw pct        | .659      | .686    | .585   | .714    | .694      | .617        | -          |
| REBOUNDS              | 385       | 193     | 155    | 37      | 165       | 260         | -          |
| Rebounds per game     | 38.5      | 38.6    | 38.8   | 37.0    | 41.3      | 36.7        | -          |
| Rebounding margin     | +5.5      | +3.8    | +6.5   | +10.0   | +7.5      | +4.2        | -          |
| ASSISTS               | 123       | 61      | 46     | 16      | 65        | 58          | -          |
| Assists per game      | 12.3      | 12.2    | 11.5   | 16.0    | 16.3      | 9.7         | -          |
| TURNOVERS             | 141       | 74      | 54     | 13      | 46        | 95          | -          |
| Turnovers per game    | 14.1      | 14.8    | 13.5   | 13.0    | 11.5      | 15.8        | -          |
| Turnover margin       | -0.1      | -2.2    | +0.0   | +10.0   | +5.3      | -3.7        | -          |
| Assist/turnover ratio | 0.9       | 0.8     | 0.9    | 1.2     | 1.4       | 0.6         | -          |
| STEALS                | 67        | 27      | 26     | 14      | 34        | 33          | -          |
| Steals per game       | 6.7       | 5.4     | 6.5    | 14.0    | 8.5       | 5.5         | -          |
| BLOCKS                | 26        | 9       | 13     | 4       | 13        | 13          | -          |
| Blocks per game       | 2.6       | 1.8     | 3.3    | 4.0     | 3.3       | 2.2         | -          |

GAME 11: NEW HAVEN AT AMERICAN INTERNATIONAL

& Dowding) head coach Debbie Buff welcomes four freshman and a community college transfer to the ranks. Sabira Ahayeva will join New Haven as a junior academically after transferring to West Haven from Dawson Community College. Joining her as true freshman are Eveani Okwuosa (North Haven, Conn.), Katelyn Simpson (Baldwin, N.Y.), Sytlianna Mantzouris (Albany, N.Y.) and Merit Innocent (Delta State, Nigeria).

PRESEASON POLL

In a poll of the league’s 12 head coaches, the New Haven women’s basketball team was selected to finish eighth after finishing the 2022-23 campaign with a 17-10 overall record and a 12-8 record in the NE10 that left them in fifth place in the league standings. 2023 NE10 champion Assumption was selected as the preseason favorite, earning eight of the 12 possible first place votes.

2023-24 Northeast-10 Women’s Basketball Coaches’ Poll

- 1. Assumption - 117 (8)
- 2. Bentley - 108 (3)

- 3. Southern New Hampshire -107 (1)
  - 4. Southern Connecticut -84
  - 5. Pace - 69
  - 6. American International - 62
  - 7. Adelphi - 60
  - 8. New Haven - 58
  - 9. Saint Anselm - 50
  - 10. Franklin Pierce - 37
  - 11. Saint Rose - 26
  - 12. Saint Michael’s - 14
- (#) indicates first-place votes



NORTHEAST-10 CONFERENCE STANDINGS

as of January 4, 2024

|                   | NE10 |   |      | OVERALL |   |      |
|-------------------|------|---|------|---------|---|------|
|                   | W    | L | PCT  | W       | L | PCT  |
| Saint Rose        | 5    | 1 | .833 | 9       | 1 | .900 |
| Bentley           | 5    | 1 | .833 | 9       | 2 | .818 |
| So. New Hampshire | 5    | 1 | .833 | 7       | 3 | .700 |
| Pace              | 4    | 2 | .667 | 10      | 2 | .833 |
| American Int’l    | 3    | 3 | .500 | 8       | 3 | .727 |
| Assumption        | 3    | 3 | .500 | 8       | 3 | .727 |
| Franklin Pierce   | 3    | 3 | .500 | 8       | 3 | .727 |
| So Connecticut    | 3    | 3 | .500 | 6       | 6 | .500 |
| Saint Anselm      | 2    | 4 | .333 | 5       | 7 | .417 |
| Adelphi           | 2    | 4 | .333 | 4       | 8 | .333 |
| New Haven         | 1    | 5 | .167 | 5       | 5 | .500 |
| Saint Michael’s   | 0    | 5 | .000 | 4       | 8 | .333 |

SCORING BREAKDOWN (NEW HAVEN/OPPONENT)

| Game                | Pts in Paint | Pts off TQs | 2nd ch. Pts. | 1st Half Pts. | 2nd Half Pts. | OT | FT    | FB    | Starter | Bench |
|---------------------|--------------|-------------|--------------|---------------|---------------|----|-------|-------|---------|-------|
| vs Wilmington       | 40/8         | 29/10       | 21/5         | 50/13         | 31/8          | -- | 15/4  | 6/0   | 62/15   | 19/6  |
| at Goldey-Beacom    | 38/18        | 14/1        | 17/2         | 48/29         | 37/28         | -- | 16/7  | 4/3   | 61/36   | 24/21 |
| at Bentley          | 38/30        | 13/12       | 10/2         | 25/24         | 34/24         | -- | 2/13  | 0/6   | 44/30   | 4/29  |
| PACE                | 28/30        | 3/16        | 5/7          | 16/25         | 27/21         | -- | 3/7   | 0/2   | 29/39   | 14/7  |
| at Assumption       | 20/32        | 10/22       | 9/5          | 17/34         | 24/36         | -- | 1/14  | 2/16  | 23/55   | 18/15 |
| SO NEW HAMPSHIRE    | 26/32        | 9/17        | 12/3         | 25/30         | 35/35         | -- | 11/13 | 10/15 | 38/61   | 22/4  |
| ADELPHI             | 26/40        | 10/13       | 9/11         | 31/23         | 33/18         | -- | 15/5  | 2/13  | 34/48   | 15/8  |
| GEORGIAN COURT      | 44/30        | 28/4        | 6/10         | 43/22         | 31/23         | -- | 7/2   | 6/5   | 60/40   | 14/5  |
| UDC                 | 28/32        | 8/10        | 14/13        | 27/21         | 40/42         | -- | 12/7  | 2/13  | 50/59   | 17/4  |
| at Saint Michael’s  | 30/18        | 11/10       | 11/5         | 34/25         | 27/20         | -- | 5/9   | 0/3   | 33/38   | 28/7  |
| at American Int’l   |              |             |              |               |               |    |       |       |         |       |
| SO CONNECTICUT      |              |             |              |               |               |    |       |       |         |       |
| SAINT ANSELM        |              |             |              |               |               |    |       |       |         |       |
| at Franklin Pierce  |              |             |              |               |               |    |       |       |         |       |
| SAINT ROSE          |              |             |              |               |               |    |       |       |         |       |
| at Pace             |              |             |              |               |               |    |       |       |         |       |
| BENTLEY             |              |             |              |               |               |    |       |       |         |       |
| ASSUMPTION          |              |             |              |               |               |    |       |       |         |       |
| at So New Hampshire |              |             |              |               |               |    |       |       |         |       |
| at Adelphi          |              |             |              |               |               |    |       |       |         |       |
| SAINT MICHAEL’S     |              |             |              |               |               |    |       |       |         |       |
| at So Connecticut   |              |             |              |               |               |    |       |       |         |       |
| AMERICAN INT’L      |              |             |              |               |               |    |       |       |         |       |
| at Saint Anselm     |              |             |              |               |               |    |       |       |         |       |
| at Saint Rose       |              |             |              |               |               |    |       |       |         |       |
| FRANKLIN PIERCE     |              |             |              |               |               |    |       |       |         |       |

CLASS SCORING

|                     | Fr. | So. | Jr. | Sr. | Gr. |
|---------------------|-----|-----|-----|-----|-----|
| vs Wilmington       | 8   | 30  | 16  | 2   | 25  |
| at Goldey-Beacom    | 2   | 22  | 22  | 6   | 33  |
| at Bentley          | 0   | 8   | 15  | 6   | 19  |
| PACE                | 3   | 8   | 13  | 11  | 8   |
| at Assumption       | 6   | 13  | 12  | 2   | 8   |
| SO NEW HAMPSHIRE    | 2   | 19  | 22  | 6   | 11  |
| ADELPHI             | 2   | 7   | 15  | 7   | 18  |
| GEORGIAN COURT      | 8   | 6   | 33  | 6   | 21  |
| UDC                 | 10  | 0   | 22  | 7   | 28  |
| at Saint Michael’s  | 2   | 14  | 35  | 3   | 7   |
| at American Int’l   |     |     |     |     |     |
| SO CONNECTICUT      |     |     |     |     |     |
| SAINT ANSELM        |     |     |     |     |     |
| at Franklin Pierce  |     |     |     |     |     |
| SAINT ROSE          |     |     |     |     |     |
| at Pace             |     |     |     |     |     |
| BENTLEY             |     |     |     |     |     |
| ASSUMPTION          |     |     |     |     |     |
| at So New Hampshire |     |     |     |     |     |
| at Adelphi          |     |     |     |     |     |
| SAINT MICHAEL’S     |     |     |     |     |     |
| at So Connecticut   |     |     |     |     |     |
| AMERICAN INT’L      |     |     |     |     |     |
| at Saint Anselm     |     |     |     |     |     |
| at Saint Rose       |     |     |     |     |     |
| FRANKLIN PIERCE     |     |     |     |     |     |
| TOTAL               | 43  | 127 | 820 | 56  | 178 |



GAME-BY-GAME STARTERS

| GAME                | 1       | 2       | 3     | 4       | 5        |
|---------------------|---------|---------|-------|---------|----------|
| vs Wilmington       | Stickle | Bassett | Hogan | Johnson | Deshaies |
| at Goldey-Beacom    | Stickle | Bassett | Hogan | Johnson | Deshaies |
| at Bentley          | Stickle | Dowding | Hogan | Johnson | Deshaies |
| PACE                | Stickle | Dowding | Hogan | Johnson | Deshaies |
| at Assumption       | Stickle | Bassett | Hogan | Johnson | Deshaies |
| SO NEW HAMPSHIRE    | Stickle | Okwuosa | Hogan | Johnson | Deshaies |
| ADELPHI             | Stickle | Okwuosa | Hogan | Johnson | Deshaies |
| GEORGIAN COURT      | Stickle | Bassett | Hogan | Okwuosa | Deshaies |
| UDC                 | Stickle | Bassett | Hogan | Okwuosa | Deshaies |
| at Saint Michael's  | Stickle | Bassett | Hogan | Okwuosa | Deshaies |
| at American Int'l   | -       | -       | -     | -       | -        |
| SO CONNECTICUT      | -       | -       | -     | -       | -        |
| SAINT ANSELM        | -       | -       | -     | -       | -        |
| at Franklin Pierce  | -       | -       | -     | -       | -        |
| SAINT ROSE          | -       | -       | -     | -       | -        |
| at Pace             | -       | -       | -     | -       | -        |
| BENTLEY             | -       | -       | -     | -       | -        |
| ASSUMPTION          | -       | -       | -     | -       | -        |
| at So New Hampshire | -       | -       | -     | -       | -        |
| at Adelphi          | -       | -       | -     | -       | -        |
| SAINT MICHAEL'S     | -       | -       | -     | -       | -        |
| at So Connecticut   | -       | -       | -     | -       | -        |
| AMERICAN INT'L      | -       | -       | -     | -       | -        |
| at Saint Anselm     | -       | -       | -     | -       | -        |
| at Saint Rose       | -       | -       | -     | -       | -        |
| FRANKLIN PIERCE     | -       | -       | -     | -       | -        |

CHARGERS IN THE NE10

TEAM STATS

| CATEGORY           | RANK | STAT |
|--------------------|------|------|
| SCORING OFFENSE    | 7    | 60.9 |
| SCORING DEFENSE    | 2    | 52.7 |
| FG %               | 2    | 41.5 |
| FG % DEFENSE       | 9    | 37.4 |
| FT %               | 10   | 65.9 |
| 3-PT FG %          | 5    | 30.9 |
| 3-PT FG % DEFENSE  | 4    | 24.6 |
| ASSISTS/GAME       | 8    | 12.3 |
| TOTAL REBOUNDING   | 3    | 38.5 |
| OFFENSIVE REB.     | 2    | 12.5 |
| DEFENSIVE REB.     | 6    | 26.0 |
| REBOUNDING MARGIN  | 2    | 5.5  |
| BLOCKED SHOTS/GAME | 8    | 2.6  |
| STEALS/GAME        | 8    | 6.7  |

INDIVIDUAL STATS

| PLAYER          | RANK | STAT |
|-----------------|------|------|
| POINTS PER GAME |      |      |
| Lindsay Hogan   | 14   | 12.7 |
| Aurora Deshaies | 17   | 12.2 |

|                   |    |     |
|-------------------|----|-----|
| REBOUNDS PER GAME |    |     |
| Aurora Deshaies   | 1  | 9.7 |
| Lindsay Hogan     | 22 | 5.6 |

|                   |   |     |
|-------------------|---|-----|
| ASSISTS PER GAME  |   |     |
| Gabrielle Stickle | 2 | 4.3 |

|                 |    |     |
|-----------------|----|-----|
| BLOCKS PER GAME |    |     |
| Eveani Okwuosa  | 13 | 0.8 |
| Lindsay Hogan   | 21 | 0.6 |

|                   |      |     |
|-------------------|------|-----|
| STEALS PER GAME   |      |     |
| Gabrielle Stickle | t-7  | 1.7 |
| Eveani Okwuosa    | t-20 | 1.2 |

|                       |    |      |
|-----------------------|----|------|
| FIELD GOAL PERCENTAGE |    |      |
| Aurora Deshaies       | 9  | 48.6 |
| Charlotte Bassett     | 13 | 44.9 |
| Lindsay Hogan         | 17 | 43.1 |

|                       |   |      |
|-----------------------|---|------|
| 3-POINT FG PERCENTAGE |   |      |
| Lindsay Hogan         | 8 | 40.8 |

|                 |     |     |
|-----------------|-----|-----|
| 3-POINT FG MADE |     |     |
| Lindsay Hogan   | t-2 | 2.5 |

FREE THROW %

SEASON RECORDS

POINTS

|                          |     |         |
|--------------------------|-----|---------|
| 1. Joy Jeter.....        | 648 | 1988-89 |
| 2. Joy Jeter.....        | 577 | 1985-86 |
| 3. Aquillin Hayes.....   | 576 | 2014-15 |
| Ashley Hilton.....       | 576 | 2006-07 |
| 5. Charlene Taylor.....  | 557 | 1988-89 |
| 6. Joy Jeter.....        | 556 | 1987-88 |
| 7. Jennifer Davis.....   | 540 | 1995-96 |
| 8. Niketa Harris.....    | 534 | 2001-02 |
| 9. Debbie Moore.....     | 533 | 1992-93 |
| 10. Briana Bradford..... | 527 | 2015-16 |

POINTS PER GAME (MIN. 20 GAMES)

|                          |      |         |
|--------------------------|------|---------|
| 1. Joy Jeter.....        | 20.6 | 1985-86 |
| 2. Niketa Harris.....    | 20.5 | 2001-02 |
| 3. Joy Jeter.....        | 20.3 | 1988-89 |
| 4. Debbie Moore.....     | 19.7 | 1992-93 |
| 5. Jennifer Davis.....   | 19.3 | 1995-96 |
| 6. Briana Bradford.....  | 18.8 | 2015-16 |
| 7. Aquillin Hayes.....   | 18.6 | 2014-15 |
| Ashley Hilton.....       | 18.6 | 2006-07 |
| 9. Debbie Moore.....     | 18.0 | 1991-92 |
| 10. Charlene Taylor..... | 17.4 | 1988-89 |

FIELD GOALS

|                         |     |         |
|-------------------------|-----|---------|
| 1. Joy Jeter.....       | 231 | 1988-89 |
| 2. Aquillin Hayes.....  | 230 | 2014-15 |
| 3. Jennifer Davis.....  | 228 | 1995-96 |
| 4. Charlene Taylor..... | 225 | 1988-89 |
| 5. Joy Jeter.....       | 219 | 1985-86 |
| 6. Ashley Hilton.....   | 216 | 2006-07 |
| 7. Joy Jeter.....       | 211 | 1986-87 |
| 8. Niketa Harris.....   | 209 | 2001-02 |
| 9. Joy Jeter.....       | 208 | 1987-88 |
| 10. Debbie Moore.....   | 204 | 1992-93 |

FIELD GOAL PERCENTAGE (MIN. 100 ATTEMPTS)

|  |      |                |
|--|------|----------------|
| 1. Shannon Driscoll (74-122)....         | .607 | 1991-92        |
| 2. <b>Aurora Deshaies (158-262) .603</b> |      | <b>2022-23</b> |
| 3. Amanda Freeman (128-216) .            | .593 | 2004-05        |
| 4. Cathy Pavell (165-282).....           | .585 | 1982-83        |
| 5. Leighanna Lister (62-108) ....        | .574 | 2022-23        |
| 6. Aurora Deshaies (130-230) ...         | .565 | 2019-20        |
| 7. Nyree Frazier (69-125) .....          | .552 | 2004-05        |
| 8. Phoenicia Wright (73-136) ...         | .537 | 1998-99        |
| 9. Nikki Carroll (93-175) .....          | .531 | 2008-09        |
| 10. Katia Oge (62-115) .....             | .529 | 2018-19        |

THREE-POINT FIELD GOALS MADE

|                               |    |         |
|-------------------------------|----|---------|
| 1. Becky Snow .....           | 63 | 1999-00 |
| 2. Becky Snow .....           | 59 | 1997-98 |
| 3. Camryn DeBose .....        | 58 | 2022-23 |
| 4. Becky Snow .....           | 57 | 1996-97 |
| 5. Becky Snow .....           | 56 | 1998-99 |
| 6. Briana Bradford .....      | 53 | 2015-16 |
| 7. Anh-Dao Tran .....         | 52 | 2012-13 |
| 8. Dominique Stellmacher..... | 48 | 2009-10 |
| 9. Audrey Cunningham .....    | 47 | 2010-11 |
| 10. Keri-Anne Jetter .....    | 45 | 2006-07 |

THREE-POINT FIELD GOAL PERCENTAGE (min. 25 made)

|                                |      |         |
|--------------------------------|------|---------|
| 1. Briiana Rende (26-60) ..... | .433 | 2005-06 |
| 2. Anh-Dao Tran (37-88) .....  | .420 | 2010-11 |
| 3. Camryn DeBose (58-143)..... | .406 | 2022-23 |
| 4. Karen Hill (27-67).....     | .403 | 1987-88 |
| 5. Bria Moore (32-80).....     | .400 | 2011-12 |
| Ashley Hilton (26-65) .....    | .400 | 2005-06 |
| Kia Nealy (32-80).....         | .400 | 2002-03 |
| 8. Ashley Hilton (27-68) ..... | .397 | 2006-07 |
| 9. Bria Moore (28-71) .....    | .394 | 2013-14 |
| 10. Brie Pergola (33-86) ..... | .384 | 2019-20 |

FREE THROWS

|                          |     |         |
|--------------------------|-----|---------|
| 1. Joy Jeter.....        | 185 | 1988-89 |
| 2. Christine Huber.....  | 140 | 1998-99 |
| Joy Jeter.....           | 140 | 1987-88 |
| 4. Joy Jeter.....        | 139 | 1985-86 |
| 5. Briana Bradford ..... | 134 | 2015-16 |
| 6. Ashley Hilton.....    | 117 | 2006-07 |
| 7. Niketa Harris.....    | 116 | 2001-02 |
| 8. Aquillin Hayes.....   | 115 | 2014-15 |
| 9. Alexandria Kerr ..... | 114 | 2018-19 |
| Lauren Hood .....        | 114 | 2008-09 |

FREE THROW PERCENTAGE (MIN. 50 MADE)

|                                   |      |         |
|-----------------------------------|------|---------|
| 1. Anh-Dao Tran (62-69) .....     | .899 | 2011-12 |
| 2. Brie Pergola (58-66) .....     | .879 | 2019-20 |
| 3. Cathy Pavell (76-87).....      | .874 | 1982-83 |
| 4. Lauren Hebert (92-107).....    | .860 | 2015-16 |
| 5. Anh-Dao Tran (68-81) .....     | .840 | 2012-13 |
| 6. Kyle Verrett (53-64).....      | .828 | 2000-01 |
| Karen Hill (53-64).....           | .828 | 1986-87 |
| 8. Briiana Rende (84-102).....    | .824 | 2007-08 |
| 9. Briana Bradford (93-113) ..... | .823 | 2013-14 |
| 10. Bria Moore (69-84) .....      | .821 | 2011-12 |

REBOUNDS

|                              |            |                |
|------------------------------|------------|----------------|
| 1. Joy Jeter.....            | 429        | 1988-89        |
| 2. Joy Jeter.....            | 378        | 1985-86        |
| 3. Joy Jeter.....            | 376        | 1987-88        |
| 4. Tiesha Grace.....         | 362        | 1995-96        |
| 5. Cathy Pavell.....         | 319        | 1982-83        |
| 6. Joy Jeter.....            | 312        | 1986-87        |
| 7. Tiesha Grace.....         | 301        | 1994-95        |
| 8. Maria Magoulas .....      | 295        | 1980-81        |
| 9. Aquillin Hayes.....       | 291        | 2014-15        |
| <b>Aurora Deshaies .....</b> | <b>291</b> | <b>2022-23</b> |

ASSISTS

|                         |     |         |
|-------------------------|-----|---------|
| 1. Moe Stevens.....     | 176 | 1995-96 |
| 2. Charlene Taylor..... | 175 | 1987-88 |
| 3. Helin Marte .....    | 174 | 2009-10 |
| 4. Charlene Taylor..... | 171 | 1986-87 |
| 5. Moe Stevens.....     | 169 | 1994-95 |
| 6. Kristy Conyers.....  | 165 | 1999-00 |
| 7. Charlene Taylor..... | 162 | 1988-89 |
| 8. Helin Marte .....    | 152 | 2008-09 |
| 9. Cathy Alston.....    | 151 | 1981-82 |
| 10. Helin Marte .....   | 137 | 2007-08 |
| Carolyn Bell.....       | 137 | 1986-87 |

BLOCKED SHOTS

|                        |    |         |
|------------------------|----|---------|
| 1. Joy Jeter.....      | 81 | 1988-89 |
| 2. Joy Jeter.....      | 62 | 1987-88 |
| 3. Arrette Harvey..... | 59 | 1989-90 |
| 4. Joy Jeter.....      | 56 | 1986-87 |
| 5. Sonja Beamon .....  | 54 | 1986-87 |
| 6. Joy Jeter.....      | 47 | 1985-86 |
| 7. Micah Wormack ..... | 45 | 2016-17 |
| 8. Micah Wormack ..... | 43 | 2019-20 |
| 9. Jill Baranger.....  | 42 | 2009-10 |
| 10. Mary Doherty.....  | 41 | 1984-85 |

STEALS

|                          |     |         |
|--------------------------|-----|---------|
| 1. Debbie Moore .....    | 138 | 1992-93 |
| 2. Charlene Taylor ..... | 134 | 1987-88 |
| 3. Charlene Taylor ..... | 100 | 1988-89 |
| 4. Charlene Taylor ..... | 96  | 1985-86 |
| 5. Kristy Conyers.....   | 93  | 1998-99 |
| 6. Alexandria Kerr.....  | 91  | 2018-19 |
| Kristy Conyers.....      | 91  | 1999-00 |
| 8. Charlene Taylor ..... | 89  | 1986-87 |
| 9. Moe Stevens.....      | 87  | 1993-94 |
| 10. Carolyn Bell.....    | 82  | 1986-87 |
| Debbie Moore .....       | 82  | 1991-92 |
| Cathy Alston.....        | 82  | 1983-84 |



CAREER RECORDS

SCORING (1,000 POINT CLUB)

|                                  |              |                        |
|----------------------------------|--------------|------------------------|
| 1. Joy Jeter.....                | 2,299        | .....1985-89           |
| 2. Charlene Taylor.....          | 1,851        | .....1985-89           |
| 3. Niketa Harris.....            | 1,673        | .....1998-02           |
| 4. Debbie Moore.....             | 1,667        | .....1989-93           |
| 5. Ashley Hilton.....            | 1,637        | .....2003-07           |
| 6. Jennifer Davis.....           | 1,622        | .....1992-96           |
| 7. Becky Snow.....               | 1,551        | .....1996-00           |
| 8. Briana Bradford.....          | 1,545        | .....2012-16           |
| 9. Alexandria Kerr.....          | 1,500        | .....2015-19           |
| 10. Christine Huber.....         | 1,453        | .....1996-00           |
| 11. Aquillin Hayes.....          | 1,392        | .....2011-15           |
| 12. Lauren Hood.....             | 1,366        | .....2005-09           |
| 13. Tiesha Grace.....            | 1,347        | .....1994-98           |
| 14. Cathy Alston.....            | 1,310        | .....1980-84           |
| 15. Camryn DeBose.....           | 1,308        | .....2018-23           |
| 16. Bria Moore.....              | 1,245        | .....2011-15           |
| 17. Sonja Beamon.....            | 1,208        | .....1983-87           |
| 18. Nikki (Tierney) Devaney..... | 1,133        | .....1990-94           |
| 19. Tristan Jackson.....         | 1,114        | .....2003-07           |
| <b>20. Aurora Deshaies.....</b>  | <b>1,084</b> | <b>.....2019-Pres.</b> |
| 21. Arnetha Eaddy.....           | 1,062        | .....1981-85           |
| 22. Micah Wormack.....           | 1,022        | .....2016-20           |

FIELD GOALS

|                         |     |              |
|-------------------------|-----|--------------|
| 1. Joy Jeter.....       | 869 | .....1985-89 |
| 2. Charlene Taylor..... | 782 | .....1985-89 |
| 3. Jennifer Davis.....  | 719 | .....1992-96 |
| 4. Debbie Moore.....    | 637 | .....1989-93 |
| 5. Niketa Harris.....   | 632 | .....1998-02 |
| 6. Ashley Hilton.....   | 594 | .....2003-07 |
| 7. Aquillin Hayes.....  | 559 | .....2011-15 |
| 8. Becky Snow.....      | 549 | .....1996-00 |
| 9. Christine Huber..... | 544 | .....1996-00 |
| 10. Tiesha Grace.....   | 541 | .....1994-98 |

FIELD GOAL PERCENTAGE (MIN. 200 MADE)

|                                     |      |              |
|-------------------------------------|------|--------------|
| 1. Amanda Freeman (351-674) .....   | .521 | .....2002-06 |
| 2. Nicole Myrick (277-551) .....    | .503 | .....1993-96 |
| 3. Joy Jeter (869-1788) .....       | .486 | .....1985-89 |
| 4. Micah Wormack (432-896) .....    | .482 | .....2016-20 |
| 5. Niketa Harris (632-1319) .....   | .479 | .....1998-02 |
| 6. Ashley Hilton (594-1259).....    | .472 | .....2003-07 |
| 7. Dana Hodges (255-543) .....      | .470 | .....1981-85 |
| 8. Aquillin Hayes (559-1195) .....  | .468 | .....2011-15 |
| 9. Phoenicia Wright (326-700) ..... | .466 | .....1998-02 |
| 10. Tristan Jackson (423-929).....  | .455 | .....2003-07 |
| 11. Jill Angotta (354-779) .....    | .454 | .....2000-04 |

THREE-POINT FIELD GOALS

|                            |     |                     |
|----------------------------|-----|---------------------|
| 1. Becky Snow.....         | 235 | .....1996-00        |
| 2. Camryn DeBose.....      | 165 | .....2018-23        |
| 3. Briana Bradford.....    | 164 | .....2012-16        |
| 4. Briiana Rende.....      | 140 | .....2005-09        |
| 5. Anh-Dao Tran.....       | 130 | .....2010-13        |
| 6. Jennifer Shoemaker..... | 126 | .....2003-07        |
| 7. Audrey Cunningham.....  | 102 | .....2010-12, 13-14 |
| 8. Lauren Hood.....        | 100 | .....2005-09        |
| Bria Moore.....            | 100 | .....2011-15        |
| 10. Elizabeth Cruso.....   | 96  | .....2011-15        |

THREE-POINT FIELD GOAL PERCENTAGE (MIN. 50 MADE)

|                                   |      |                 |
|-----------------------------------|------|-----------------|
| 1. Kia Nealy (53-139) .....       | .381 | .....2002-04    |
| 2. Briiana Rende (140-390) .....  | .359 | .....2005-09    |
| 3. Camryn DeBose (165-464).....   | .356 | .....2018-Pres. |
| 4. Anh-Dao Tran (130-370).....    | .351 | .....2010-13    |
| 5. Ashley Hilton (72-205).....    | .351 | .....2003-07    |
| 6. Becky Snow (235-682) .....     | .345 | .....1996-00    |
| 7. Cori Harrington (78-227) ..... | .344 | .....1998-02    |
| 8. Charlene Taylor (55-164).....  | .335 | .....1985-89    |
| 9. Lauren Hood (100-300) .....    | .333 | .....2005-09    |
| 10. Bria Moore (100-308) .....    | .325 | .....2011-15    |

FREE THROWS

|                                  |     |              |
|----------------------------------|-----|--------------|
| 1. Joy Jeter.....                | 560 | .....1985-89 |
| 2. Niketa Harris.....            | 409 | .....1998-02 |
| 3. Briana Bradford.....          | 401 | .....2012-16 |
| 4. Ashley Hilton.....            | 377 | .....2003-07 |
| 5. Christine Huber.....          | 365 | .....1996-00 |
| 6. Alexandria Kerr.....          | 346 | .....2015-19 |
| 6. Lauren Hood.....              | 346 | .....2005-09 |
| 8. Debbie Moore.....             | 325 | .....1989-93 |
| 9. Bria Moore.....               | 285 | .....2011-15 |
| 10. Nikki (Tierney) Devaney..... | 282 | .....1990-94 |

FREE THROW PERCENTAGE (MIN. 150 MADE)

|                                     |      |              |
|-------------------------------------|------|--------------|
| 1. Anh-Dao Tran (170-204).....      | .833 | .....2010-13 |
| 2. Brie Pergola (205-255) .....     | .804 | .....2017-22 |
| 3. Karen Hill (164-211) .....       | .777 | .....1984-88 |
| 4. Briana Bradford (401-526).....   | .762 | .....2012-16 |
| 5. Briiana Rende (260-342) .....    | .760 | .....2005-09 |
| 6. Becky Snow (218-288) .....       | .757 | .....1996-00 |
| 7. Bria Moore (285-377) .....       | .756 | .....2011-15 |
| 8. Lauren Hood (346-460) .....      | .752 | .....2005-09 |
| 9. Lauren Hebert (233-310) .....    | .752 | .....2012-16 |
| 10. Tristan Jackson (264-352) ..... | .750 | .....2003-07 |
| 11. Adelina Gentry (238-323) .....  | .737 | .....2002-06 |

REBOUNDING

|                                |            |                        |
|--------------------------------|------------|------------------------|
| 1. Joy Jeter.....              | 1,486      | .....1985-89           |
| 2. Tiesha Grace.....           | 1,047      | .....1994-98           |
| 3. Phoenicia Wright.....       | 1,006      | .....1998-02           |
| 4. Aquillin Hayes.....         | 945        | .....2011-15           |
| 5. Sonja Beamon.....           | 901        | .....1983-87           |
| <b>6. Aurora Deshaies.....</b> | <b>858</b> | <b>.....2019-Pres.</b> |
| 7. Tristan Jackson.....        | 824        | .....2003-07           |
| 8. Debbie Moore.....           | 817        | .....1989-93           |
| 9. Alexandria Kerr.....        | 814        | .....2015-19           |
| 10. Ashley Hilton.....         | 810        | .....2003-07           |

ASSISTS

|                                 |     |              |
|---------------------------------|-----|--------------|
| 1. Charlene Taylor.....         | 603 | .....1985-89 |
| 2. Moe Stevens.....             | 539 | .....1992-96 |
| 3. Helin Marte.....             | 503 | .....2006-10 |
| 4. Kristy Conyers.....          | 482 | .....1996-00 |
| 5. Cathy Alston.....            | 451 | .....1980-84 |
| 6. Carolyn Bell.....            | 372 | .....1983-87 |
| 7. Briiana Rende.....           | 368 | .....2005-09 |
| 8. Nikki (Tierney) Devaney..... | 360 | .....1990-94 |
| 9. Debbie Moore.....            | 314 | .....1989-93 |
| 10. Anh-Dao Tran.....           | 303 | .....2010-13 |

BLOCKED SHOTS

|                        |     |              |
|------------------------|-----|--------------|
| 1. Joy Jeter.....      | 246 | .....1985-89 |
| 2. Micah Wormack.....  | 136 | .....2016-20 |
| 3. Aquillin Hayes..... | 134 | .....2011-15 |
| 4. Katia Oge.....      | 101 | .....2015-19 |
| 5. Mary Doherty.....   | 92  | .....1981-85 |
| 6. Sonja Beamon.....   | 91  | .....1983-87 |
| 7. Arrette Harvey..... | 85  | .....1989-91 |
| 8. Rykema Stone.....   | 83  | .....2011-15 |
| 9. Arlevia Samuel..... | 73  | .....1991-95 |
| 10. Ashley Hilton..... | 72  | .....2003-07 |

STEALS

|                                 |     |              |
|---------------------------------|-----|--------------|
| 1. Charlene Taylor.....         | 419 | .....1985-89 |
| 2. Debbie Moore.....            | 379 | .....1989-93 |
| 3. Kristy Conyers.....          | 316 | .....1996-00 |
| 4. Moe Stevens.....             | 298 | .....1992-96 |
| 5. Carolyn Bell.....            | 281 | .....1983-87 |
| 6. Nikki (Tierney) Devaney..... | 278 | .....1990-94 |
| 7. Cathy Alston.....            | 251 | .....1980-84 |
| 8. Helin Marte.....             | 238 | .....2006-10 |
| 9. Jennifer Davis.....          | 237 | .....1992-96 |
| 10. Joy Jeter.....              | 221 | .....1985-89 |

GAMES PLAYED

|                       |     |              |
|-----------------------|-----|--------------|
| 1. Joy Jeter.....     | 122 | .....1985-89 |
| Charlene Taylor.....  | 122 | .....1985-89 |
| 3. Ashley Hilton..... | 119 | .....2003-07 |
| 4. Sonja Beamon.....  | 117 | .....1983-87 |
| Adelina Gentry.....   | 117 | .....2002-06 |
| Lauren Hood.....      | 117 | .....2005-09 |
| 7. Briiana Rende..... | 116 | .....2005-09 |
| 8. Alanna Zahora..... | 115 | .....2003-07 |
| Lauren Hebert.....    | 115 | .....2012-16 |
| 10. Helin Marte.....  | 114 | .....2006-10 |
| Carolyn Bell.....     | 114 | .....1983-87 |

## THE LAST TIME

### THE LAST TIME A NEW HAVEN STUDENT-ATHLETE...

|   |   |
|---|---|
| Scored 20-29 points.....                      | Charlotte Bassett (22) vs Georgian Court, 12/17/23  |
| Scored 30-39 points.....                      | Lindsay Hogan (30) vs Wilmington, 11/10/22  |
| Made 10+ field goals .....                    | Lindsay Hogan (10) vs Wilmington, 11/10/23  |
| Made 10+ free throws.....                     | Camryn DeBose (13-14) vs Georgian Court, 11/12/22   |
| Made 5+ three-pointers .....                  | Lindsay Hogan (5) vs Wilmington, 11/10/23   |
| Had 10+ rebounds .....                        | Aurora Deshaies (11) at Bentley, 11/15/23   |
| Had 15-19 rebounds.....                       | Aurora Deshaies (15) at Le Moyne, 02/18/23  |
| Had 20 rebounds .....                         | Aurora Deshaies (21) at Adelphi, 02/18/22   |
| Had 5+ assists.....                           | Gabrielle Stickle (6) at Saint Michael's, 01/03/24  |
| Had 10+ assists .....                         | Luzdali Ocasio (10) at Chestnut Hill, 12/11/19  |
| Had 5+ blocks.....                            | Micah Wormack (5) vs. Le Moyne, 11/23/19  |
| Had 5+ steals .....                           | Gabrielle Stickle (6) vs Wilmington, 11/10/23   |
| Had a double-double.....                      | Aurora Deshaies (18 pts, 11 rbd) vs Georgian Court, 12/17/23                                      |
| Had consecutive double-doubles.....           | Aurora Deshaies (3) vs Adelphi, vs Georgian Court, UDC 12/5-12/30/23                              |
| Led team in points, rebounds and assists..... | Aurora Deshaies (14 points, 15 rebounds, 4 assists) vs. Bloomfield, 11/19/22                      |
| Scored in the final 10 seconds to win.....    | Cam DeBose (2-point driving layup (1.7 seconds remaining) to win 56-54 vs Staten Island, 02/15/23 |

### THE LAST TIME A NEW HAVEN TEAM...

|  |  |
|--|--|
| Scored 70-79 points.....   | vs Georgian Court (W, 74-45), 12/17/23   |
| Scored 80-89 points.....   | at Goldey-Beacom (W, 85-57), 11/11/23  |
| Scored 90-99 points .....  | vs. Post, (W, 91-60), 12/31/17   |
| Scored 100 points.....   | vs. Mercy (W, 103-81), 12/01/07  |
| Allowed 50 points or fewer .....   | at Saint Michael's (W, 61-45), 01/03/24  |
| Allowed 40 points or fewer .....   | vs Wilmington (W, 81-21), 11/10/23   |
| Won by 20-29 points.....   | vs Georgian Court (W, 74-45), 12/17/23   |
| Won by 30-39 points.....   | vs. Wilmington (W, 81-21), 11/10/23  |
| Won by 40 points .....   | vs. Wilmington (W, 81-21), 11/10/23  |
| Had 50 rebounds .....  | at Goldey-Beacom (50), 11/11/23  |
| Shot 50 percent or better from the field .....                             | vs Georgian Court (50.0%), 12/17/23  |
| Shot 50 percent or better from three-point range (min. 10 attempts) .....  | vs Saint Anselm (58.3%), 02/21/23  |
| Shot 90 percent or better from the free throw line (min. 10 attempts)..... | vs. Staten Island (90.0 percent, 9-10), 2/21/23                                    |
| Made more three-point than two-point field goals .....                     | vs. No. 10 Holy Family (13 three-pointers, 12 two-pointers), 11/15/08              |
| Had 20 assists.....  | vs Georgian Court (21), 12/17/23   |
| Had 20 steals.....   | vs. Mercy (20), 12/01/07   |
| Had 4 players in double figures .....                                      | at Goldey-Beacom (Hogan 22, Deshaies 17, Johnson 16, Dowding 14), 11/11/23         |
| Had 5 players in double figures.....                                       | vs. Bloomfield (Deshaies 12, DeBose 12, Wormack 10, White 10, Ocasio 10), 11/20/19 |
| Had all 5 starters in double figures.....                                  | vs. UPR-Bayamon (Kerr 19, Pergola 16, Wormack 13, Cubbage 11, DeBose 10), 11/21/18 |
| Had 2 players with 10+ rebounds.....                                       | vs. Georgian Court (Hogan 12, Deshaies 11), 12/17/23                               |
| Had 2 players record a double-double .....                                 | at Chestnut Hill (Wormack 15 pts/10 reb; Deshaies 15 pts/10 reb), 12/11/19         |
| Won in overtime.....   | 72-64 at College of Staten Island, 11/17/21  |
| Lost in overtime.....  | 84-87 (2 OT) vs Dominican, 01/04/23  |
| Scored 80 points or more and lost .....                                    | vs. Dominican (84-87 2OT), 01/04/23  |
| Allowed 50 points or fewer and lost.....                                   | at Le Moyne (42-28), 03/07/19  |
| Played a nationally-ranked opponent.....                                   | at No. 11 Assumption, 11/29/23   |
| Defeated a nationally-ranked opponent .....                                | vs. No. 19 Bentley (53-40), 01/14/20   |

BOLD DENOTES 2023-24 OCCURENCE



DEBBIE BUFF

HEAD COACH  
FIFTH SEASON  
CORTLAND

Debbie Buff enters her fifth season at the helm of the Blue and Gold in 2023-24, coming to New Haven prior to the 2018-19 campaign following a seven-year stint at Wheeling Jesuit University (Wheeling, W.V.), which included back-to-back Mountain East Conference Championships and NCAA Division II tournament appearances.

Buff (67-47, .573) has led the Blue and Gold to an appearance in the Northeast-10 Conference tournament in each of her four seasons, which includes back-to-back 18-win campaigns in each of her first two seasons.

Last season, Buff led the Chargers to a 17-10 overall record and a first-round home game against Franklin Pierce in the NE10 Championship. Leading the way for Buff was the co-captain duo over graduate guard Camryn DeBose and senior Aurora Deshaies, both of whom earned a spot on Northeast-10 All-Conference teams. DeBose, an NE10 First Team and All-Defensive Team selection was also tabbed the NE10's Woman of the Year, the third Chargers to earn the distinction since the Blue and Gold joined the league.

After returning from the CoVID-19 shutdown, Buff led the Chargers to a 10-16 overall record led by DeBose and DeShaies who combined to averaged over 25 points per game. DeBose also capped off the season as one of three Chargers who were named to the NE10 Academic All-Conference Teams following the winter seasons.

During her second season in 2019-20, Buff led the Chargers to an 18-9 record. New Haven finished the season ninth in the nation in Division II in scoring defense, holding opponents to just 53.7 points per game. NE10 All-Rookie selection Aurora Deshaies led the conference in field goal pct. (.565), senior Micah Wormack earned Second Team All-NE10 honors, and DeBose was named to the Northeast-10 All-Academic Team.

In her first campaign with the Chargers in 2018-19, Buff led New Haven to an 18-12 record, an improvement of six wins over the season prior to her arrival. The season culminated with a trip to the NE10 semifinals for the first time since 2016 following a road victory over Stonehill in the NE10 quarterfinals. Buff also helped mentor Alexandria Kerr, a First Team All-NE10 honoree and three-time CoSIDA First Team Academic All-District selection.

Prior to New Haven, Buff took over the Wheeling Jesuit program in 2011 and in five years led her first full recruiting class to the first of back-to-back Mountain East Conference Championships in 2015-16. The Cardinals finished that season with a 27-6 overall record, which tied the school record for most victories in a single season.

The Cardinals followed that up with a second-straight 25-win season, Mountain East Championship and subsequent trip to the NCAA Division II regional championship. Over her seven years in West Virginia, Buff collected a 111-93 overall record for a .544 winning percentage. Over her seven years, the Cardinals finished with a plus-.500 record on four occasions.

Prior to Wheeling Jesuit, Buff spent two seasons at Endicott College where she led the Gulls to the most wins in school history with a 23-6 record in 2008-09 and an appearance in the championship game of the Commonwealth Coast Conference. In her two seasons at Endicott, she compiled an overall record of 42-14.

Her first stint as a head coach came at the Rochester Institute of Technology where her five-plus year career was highlighted by Empire 8 Coach of the Year accolades in 2006-07 when she led the Tigers to the most victories in the history of the RIT women's basketball program and the program's first ever appearance in the Empire 8 and ECAC Championships.

Prior to her collegiate head coaching career, Buff served as an assistant coach and recruiting coordinator at fellow Northeast-10 opponent College of Saint Rose where she helped lead the Golden Knights to the 2000 NCAA Division II Northeast Region Championship, a 34-1 record and a national ranking as high as No. 1 in the country.

Previous to joining a college program, Buff spent 14 years as the head coach at Bishop Maginn High School in Albany. In her time there, she recorded 203 wins and 57 losses while capturing five Big 10 Conference Championships, a Section II title, a regional title and a New York State Class A title. A Hall of Famer at Bishop Maginn, Buff was named the New York State Coach of the Year following the team's 1996 state title run.

A graduate from the State University of New York College at Cortland with a Bachelor of Science degree in physical education, she also holds a Master's Degree in health education from Russell Sage College. During her time at Cortland, she competed three years for the women's basketball team before turning her attention to training for the Skylon International Marathon in New York. In addition to Skylon, Buff has competed in seven triathlons, most notably the Lake Placid Olympic Tour triathlon.

Outside of her coaching and triathlon experiences, Buff has donated countless hours of volunteer time with the Alzheimer's Association and the Make A Wish foundation, both causes near and dear to her heart.

BUFF ALL-TIME VS. OPPONENTS

|                              |                            |
|------------------------------|----------------------------|
| Adelphi.....                 | 2-7                        |
| American International ..... | 7-2                        |
| Assumption .....             | 2-4                        |
| Bentley .....                | 2-4                        |
| Bloomfield.....              | 4-0                        |
| Bloomsburg.....              | 0-0                        |
| Bridgeport.....              | 3-0                        |
| Chestnut Hill.....           | 2-1                        |
| Central Oklahoma .....       | 0-1                        |
| District of Columbia.....    | 1-0                        |
| Dominican.....               | 2-1                        |
| Franklin Pierce .....        | 4-2                        |
| Georgian Court .....         | 3-0                        |
| Goldey-Beacom.....           | 3-0                        |
| Le Moyne .....               | 3-7 Overall, 2-6 New Haven |

|                             |     |
|-----------------------------|-----|
| Merrimack.....              | 0-1 |
| Nyack .....                 | 1-0 |
| Pace .....                  | 3-5 |
| Post .....                  | 1-0 |
| Puerto Rico - Bayamon ..... | 1-0 |
| Saint Anselm .....          | 2-4 |
| Saint Michael's .....       | 6-0 |
| Saint Rose.....             | 5-3 |
| Saint Thomas Aquinas .....  | 1-1 |
| So. Connecticut State.....  | 6-1 |
| So. New Hampshire .....     | 1-4 |
| Staten Island.....          | 3-0 |
| Stonehill.....              | 1-3 |
| Upper Iowa .....            | 1-0 |
| Wilmington.....             | 1-0 |

THE BUFF FILE

University of New Haven  
Head Coach (2018-Present)

Wheeling Jesuit University  
Head Coach (2011-2018)

Endicott College  
Head Coach (2008-10)

Rochester Institute of Technology  
Head Coach (2002-08)

College of Saint Rose  
Assistant Coach

Bishop Maginn High School  
Head Coach

BUFF YEAR-BY-YEAR  
HEAD COACHING RECORDS

|                             |                             |
|-----------------------------|-----------------------------|
| 2002-03 (RIT) .....         | 7-18 Overall, 3-11 Empire 8 |
| 2003-04 (RIT) .....         | 10-15 Overall, 5-9 Empire 8 |
| 2004-05 (RIT) .....         | 8-17 Overall, 4-18 Empire 8 |
| 2005-06 (RIT) .....         | 6-18 Overall, 3-11 Empire 8 |
| 2006-07 (RIT) .....         | 15-12 Overall, 8-6 Empire 8 |
| 2007-08 (RIT) .....         | 5-3 Overall, 2-2 Empire 8   |
| 2008-09 (EC) .....          | 23-6 Overall, 12-1 CCC      |
| 2009-10 (EC) .....          | 19-8 Overall, 11-2 CCC      |
| 2011-12 (WJU) .....         | 5-22 Overall, 2-20 WVIAC    |
| 2012-13 (WJU) .....         | 8-19 Overall, 5-17 WVIAC    |
| 2013-14 (WJU) .....         | 15-13 Overall, 11-10 MEC    |
| 2014-15 (WJU) .....         | 19-9 Overall, 15-7 MEC      |
| 2015-16 (WJU) .....         | 27-6 Overall, 18-4 MEC      |
| 2016-17 (WJU) .....         | 25-7 Overall, 15-5 MEC      |
| 2017-18 (WJU) .....         | 12-17, 10-12 MEC            |
| 2018-19 (UNH) .....         | 18-11 Overall, 10-10 NE10   |
| 2019-20 (UNH) .....         | 8-19 Overall, 12-7 NE10     |
| 2021-22 (UNH) .....         | 10-15 Overall, 5-14 NE10    |
| 2022-23 (UNH) .....         | 17-9 Overall, 12-8 NE10     |
| 2023-24 (UNH) .....         | 5-5 Overall, 1-5 NE10       |
| <b>Overall Record .....</b> | <b>272-242 (.529)</b>       |
| <b>NE10 Record .....</b>    | <b>40-44 (.476)</b>         |





PLAYER CAREER/SEASON STATS



GABRIELLE STICKLE

1

GUARD

SENIOR | 5-6  
SYRACUSE, N.Y. | JAMESVILLE-DEWITT

SINGLE-GAME SEASON HIGHS

Points: 11 vs Pace (11/21/23)  
Rebounds: 6 at Goldey-Beacom (11/11/23)  
Assists: 8, 2x last vs Georgian Court (12/17/23)  
Steals: 6 vs Wilmington (11/10/23)  
Blocks: 1 at Saint Michael's (1/3/24)  
FG made: 4 vs Pace (11/21/23)  
FG attempts: 10, 2x last vs Adelphi (12/5/23)  
3FG made: 2, 2x last vs Pace (11/21/23)  
3FG attempts: 5, 3x last at Assumption (11/28/23)  
FT made: 4 vs Georgian Court (12/17/23)  
FT attempts: 5 vs Georgian Court (12/17/23)

SINGLE-GAME CAREER HIGHS

Points: 13 vs Assumption (12/13/22)  
Rebounds: 6 vs Dominican (1/4/23)  
Assists: 8, 2x last vs Georgian Court (12/17/23)  
Steals: 6 vs Wilmington (11/10/23)  
Blocks: 1 at Saint Michael's (1/3/24)  
FG made: 5 vs Assumption (12/13/22)  
FG attempts: 10, 3x last vs Adelphi (12/5/23)  
3FG made: 3, 2x last vs Dominican (1/4/23)  
3FG attempts: 7 vs Dominican (1/4/23)  
FT made: 4 vs Georgian Court (12/17/23)  
FT attempts: 5 vs Georgian Court (12/17/23)

CAREER STATISTICS

|         |    |    |     |      | -----Total----- |     |      | -----3-Point----- |     |      | -----F-Throw----- |     |      | -----Rebounds----- |     |     |     |    |    |     |    |     |     |     |     |
|---------|----|----|-----|------|-----------------|-----|------|-------------------|-----|------|-------------------|-----|------|--------------------|-----|-----|-----|----|----|-----|----|-----|-----|-----|-----|
| Year    | GP | GS | Min | Avg  | FG              | FGA | Pct  | FG                | FGA | Pct  | FT                | FTA | Pct  | Off                | Def | Tot | Avg | PF | FO | Ast | TO | Blk | Stl | Pts | Avg |
| 2021-22 | 21 | 2  | 220 | 10.5 | 14              | 53  | .264 | 7                 | 29  | .241 | 5                 | 9   | .556 | 1                  | 11  | 15  | 0.7 | 17 | 0  | 12  | 11 | 0   | 9   | 40  | 1.9 |
| 2022-23 | 27 | 2  | 392 | 14.5 | 19              | 73  | .260 | 14                | 42  | .333 | 4                 | 14  | .286 | 8                  | 41  | 49  | 1.8 | 32 | 0  | 22  | 18 | 0   | 11  | 56  | 2.1 |
| 2023-24 | 10 | 10 | 353 | 35.3 | 17              | 64  | .266 | 7                 | 28  | .250 | 15                | 20  | .750 | 2                  | 32  | 34  | 3.4 | 20 | 0  | 43  | 19 | 1   | 17  | 56  | 5.6 |
| CAREER  | 58 | 14 | 964 | 16.6 | 50              | 190 | .263 | 28                | 99  | .283 | 24                | 43  | .558 | 14                 | 84  | 98  | 1.7 | 69 | 0  | 77  | 48 | 1   | 37  | 152 | 2.6 |



EVEANI OKWUOSA

2

GUARD

FRESHMAN | 5-9  
NORTH HAVEN, CONN. | HAMDEN HALL

SINGLE-GAME SEASON HIGHS

Points: 10 vs UDC (12/30/23)  
Rebounds: 4 at Assumption (11/28/23)  
Assists: 3 vs Georgian Court (12/17/23)  
Steals: 3 at Assumption (11/28/23)  
Blocks: 3 vs Wilmington (11/10/23)  
FG made: 4, 2x last vs UDC (12/30/23)  
FG attempts: 7, 2x last vs Georgian Court (12/17/23)  
3FG made: 1, 2x last vs UDC (12/30/23)  
3FG attempts: 1, 5x last vs UDC (12/30/23)  
FT made: 1 vs UDC (12/30/23)  
FT attempts: 2 vs UDC (12/30/23)

SINGLE-GAME CAREER HIGHS

Points: 10 vs UDC (12/30/23)  
Rebounds: 4 at Assumption (11/28/23)  
Assists: 3 vs Georgian Court (12/17/23)  
Steals: 3 at Assumption (11/28/23)  
Blocks: 3 vs Wilmington (11/10/23)  
FG made: 4, 2x last vs UDC (12/30/23)  
FG attempts: 7, 2x last vs Georgian Court (12/17/23)  
3FG made: 1, 2x last vs UDC (12/30/23)  
3FG attempts: 1, 5x last vs UDC (12/30/23)  
FT made: 1 vs UDC (12/30/23)  
FT attempts: 2 vs UDC (12/30/23)

CAREER STATISTICS

|         |    |    |     |      | -----Total----- |     |      | -----3-Point----- |     |      | -----F-Throw----- |     |      | -----Rebounds----- |     |     |     |    |    |     |    |     |     |     |     |
|---------|----|----|-----|------|-----------------|-----|------|-------------------|-----|------|-------------------|-----|------|--------------------|-----|-----|-----|----|----|-----|----|-----|-----|-----|-----|
| Year    | GP | GS | Min | Avg  | FG              | FGA | Pct  | FG                | FGA | Pct  | FT                | FTA | Pct  | Off                | Def | Tot | Avg | PF | FO | Ast | TO | Blk | Stl | Pts | Avg |
| 2023-24 | 10 | 5  | 188 | 18.8 | 17              | 34  | .500 | 2                 | 5   | .400 | 1                 | 3   | .333 | 7                  | 16  | 23  | 2.3 | 14 | 0  | 9   | 8  | 8   | 12  | 37  | 3.7 |
| CAREER  | 10 | 5  | 188 | 18.8 | 17              | 34  | .500 | 2                 | 5   | .400 | 1                 | 3   | .333 | 7                  | 16  | 23  | 2.3 | 14 | 0  | 9   | 8  | 8   | 12  | 37  | 3.7 |



PLAYER CAREER/SEASON STATS



BECCA TOWNES

3

GUARD

GRADUATE | 5-48

NEWBURGH, N.Y. | OUR LADY OF LOURDES | SAINT ROSE

SINGLE-GAME SEASON HIGHS

Points:  
Rebounds:  
Assists:  
Steals:  
Blocks:  
FG made:  
FG attempts:  
3FG made:  
3FG attempts:  
FT made:  
FT attempts:

SINGLE-GAME CAREER HIGHS

Points: 27, 2x last vs Franklin Pierce (2/14/22)  
Rebounds: 11 vs Bryant & Stratton (3/4/21)  
Assists: 8 vs Franklin Pierce (2/14/22)  
Steals: 7 at Stonehill (2/25/22)  
Blocks: 4 vs American International (2/21/22)  
FG made: 9, 2x last vs Franklin Pierce (2/14/22)  
FG attempts: 21 at Stonehill (2/25/22)  
3FG made: 6 vs Wilmington (11/9/19)  
3FG attempts: 12 vs New Haven (2/12/20)  
FT made: 8 vs Franklin Pierce (2/14/22)  
FT attempts: 8 vs Franklin Pierce (2/14/22)

CAREER STATISTICS

| Year    | GP | GS | Min   | Avg  | Total |     |      | 3-Point |     |      | F-Throw |     |      | Rebounds |     |     |     | PF  | FO | Ast | TO  | Blk | Stl | Pts | Avg  |
|---------|----|----|-------|------|-------|-----|------|---------|-----|------|---------|-----|------|----------|-----|-----|-----|-----|----|-----|-----|-----|-----|-----|------|
|         |    |    |       |      | FG    | FGA | Pct  | FG      | FGA | Pct  | FT      | FTA | Pct  | Off      | Def | Tot | Avg |     |    |     |     |     |     |     |      |
| 2018-19 | 23 | 0  | 235   | 10.2 | 10    | 31  | .323 | 3       | 16  | .188 | 9       | 16  | .563 | 3        | 32  | 345 | 1.5 | 16  | 0  | 30  | 12  | 6   | 14  | 32  | 1.4  |
| 2019-20 | 26 | 26 | 905   | 34.8 | 94    | 232 | .405 | 35      | 122 | .287 | 32      | 42  | .762 | 10       | 68  | 78  | 3.0 | 36  | 0  | 55  | 85  | 11  | 44  | 255 | 9.8  |
| 2020-21 | 7  | 7  | 206   | 29.4 | 32    | 78  | .410 | 10      | 41  | .244 | 14      | 17  | .824 | 6        | 35  | 41  | 5.9 | 13  | 0  | 11  | 13  | 2   | 9   | 88  | 12.6 |
| 2022-23 | 23 | 18 | 686   | 29.8 | 88    | 253 | .348 | 25      | 100 | .250 | 52      | 63  | .825 | 11       | 107 | 118 | 5.1 | 51  | 0  | 69  | 63  | 12  | 55  | 253 | 11.0 |
| AT UNH  | -- | -- | --    | --   | --    | --  | --   | --      | --  | --   | --      | --  | --   | --       | --  | --  | --  | --  | -- | --  | --  | --  | --  | --  | --   |
| CAREER  | 79 | 51 | 2,032 | 25.7 | 224   | 594 | .377 | 73      | 279 | .262 | 107     | 138 | .775 | 30       | 242 | 272 | 3.4 | 116 | 0  | 165 | 173 | 31  | 122 | 628 | 7.9  |

PLAYER CAREER/SEASON STATS



CHARLOTTE BASSETT

5

GUARD

JUNIOR | 5-6  
GLASTONBURY, CONN. | GLASTONBURY

SINGLE-GAME SEASON HIGHS

Points: 22 vs Georgian Court (12/17/23)  
Rebounds: 7 vs Adelphi (12/5/23)  
Assists: 3, 3x last at Saint Michael's (1/3/24)  
Steals: 3 vs Georgian Court (12/17/23)  
Blocks:  
FG made: 9 vs Georgian Court (12/17/23)  
FG attempts: 16 vs Georgian Court (12/17/23)  
3FG made: 2, 3x last vs UDC (12/30/23)  
3FG attempts: 7 vs Georgian Court (12/17/23)  
FT made: 2, 4x last vs UDC (12/30/23)  
FT attempts: 4, vs Pace (11/21/23)

SINGLE-GAME CAREER HIGHS

Points: 22 vs Georgian Court (12/17/23)  
Rebounds: 7 vs Adelphi (12/5/23)  
Assists: 3, 4x last at Saint Michael's (1/3/24)  
Steals: 3 vs Georgian Court (12/17/23)  
Blocks: 1, vs Adelphi (1/17/22)  
FG made: 9 vs Georgian Court (12/17/23)  
FG attempts: 16 vs Georgian Court (12/17/23)  
3FG made: 2, 3x last vs UDC (12/30/23)  
3FG attempts: 7 vs Georgian Court (12/17/23)  
FT made: 2, 4x last vs UDC (12/30/23)  
FT attempts: 4, vs Pace (11/21/23)

CAREER STATISTICS

| Year    | GP | GS | Min | Avg  | Total |     |      | 3-Point |     |      | F-Throw |     |      | Rebounds |     |     |     | PF | FO | Ast | TO | Blk | Stl | Pts | Avg |
|---------|----|----|-----|------|-------|-----|------|---------|-----|------|---------|-----|------|----------|-----|-----|-----|----|----|-----|----|-----|-----|-----|-----|
|         |    |    |     |      | FG    | FGA | Pct  | FG      | FGA | Pct  | FT      | FTA | Pct  | Off      | Def | Tot | Avg |    |    |     |    |     |     |     |     |
| 2021-22 | 12 | 0  | 71  | 5.9  | 8     | 23  | .348 | 2       | 10  | .200 | 0       | 2   | .000 | 2        | 8   | 10  | 0.8 | 8  | 0  | 3   | 8  | 1   | 0   | 18  | 1.5 |
| 2022-23 | 20 | 0  | 75  | 3.7  | 6     | 17  | .353 | 2       | 8   | .250 | 1       | 2   | .500 | 1        | 6   | 7   | 0.4 | 10 | 0  | 4   | 7  | 0   | 4   | 15  | 0.8 |
| 2023-24 | 10 | 6  | 241 | 24.1 | 31    | 69  | .449 | 8       | 23  | .348 | 9       | 12  | .750 | 11       | 24  | 35  | 3.5 | 13 | 1  | 15  | 14 | 0   | 9   | 79  | 7.9 |
| CAREER  | 42 | 6  | 386 | 9.2  | 45    | 109 | .413 | 12      | 41  | .293 | 10      | 16  | .625 | 14       | 38  | 52  | 1.2 | 31 | 1  | 22  | 29 | 1   | 13  | 112 | 2.7 |



NAYELI DOWDING

10

GUARD

JUNIOR | 5-6  
BALDWIN, N.Y. | BALDWIN | HARTFORD

SINGLE-GAME SEASON HIGHS

Points: 14 at Goldey-Beacom (11/11/23)  
Rebounds: 6 at Bentley (11/15/23)  
Assists: 2, 2x last vs Georgian Court (12/17/23)  
Steals: 2, 2x last at Assumption (11/28/23)  
Blocks:  
FG made: 5, 3x last vs Georgian Court (12/17/23)  
FG attempts: 14 at Goldey-Beacom (11/11/23)  
3FG made: 2, 3x last at Saint Michael's (1/3/24)  
3FG attempts: 6 at Goldey-Beacom (11/11/23)  
FT made: 2, 3x last at Saint Michael's (1/3/24)  
FT attempts: 2, 5x last at Saint Michael's (1/3/24)

SINGLE-GAME CAREER HIGHS

Points: 15, 2x last vs Villa Maria (2/12/23)  
Rebounds: 6, 2x last at Bentley (11/15/23)  
Assists: 4 at Chicago State (2/24/23)  
Steals: 2, 6x last at Assumption (11/28/23)  
Blocks: 1, 2x last at Brown (12/3/22)  
FG made: 6, 3x last vs Merrimack (2/16/23)  
FG attempts: 20, 2x last vs Merrimack (2/16/23)  
3FG made: 4 vs Villa Maria (2/12/23)  
3FG attempts: 10 vs Merrimack (2/16/23)  
FT made: 6 at Chicago State (2/25/23)  
FT attempts: 8 at Chicago State (2/25/23)

CAREER STATISTICS

| Year    | GP | GS | Min   | Avg  | Total |     |      | 3-Point |     |      | F-Throw |     |      | Rebounds |     |     |     | PF | FO | Ast | TO | Blk | Stl | Pts | Avg |
|---------|----|----|-------|------|-------|-----|------|---------|-----|------|---------|-----|------|----------|-----|-----|-----|----|----|-----|----|-----|-----|-----|-----|
|         |    |    |       |      | FG    | FGA | Pct  | FG      | FGA | Pct  | FT      | FTA | Pct  | Off      | Def | Tot | Avg |    |    |     |    |     |     |     |     |
| 2021-22 | 27 | 0  | 229   | 8.5  | 11    | 52  | .212 | 10      | 33  | .303 | 4       | 8   | .500 | 8        | 16  | 24  | 0.9 | 16 | 0  | 10  | 19 | 1   | 3   | 36  | 1.3 |
| 2022-23 | 28 | 27 | 802   | 28.6 | 89    | 331 | .269 | 26      | 142 | .183 | 26      | 39  | .667 | 24       | 45  | 69  | 2.5 | 33 | 1  | 25  | 58 | 1   | 20  | 230 | 8.2 |
| 2023-24 | 10 | 2  | 240   | 24.0 | 30    | 86  | .349 | 8       | 31  | .258 | 10      | 12  | .833 | 8        | 19  | 27  | 2.7 | 17 | 0  | 9   | 9  | 1   | 5   | 78  | 7.8 |
| AT UNH  | 10 | 2  | 240   | 24.0 | 30    | 86  | .349 | 8       | 31  | .258 | 10      | 12  | .833 | 8        | 19  | 27  | 2.7 | 17 | 0  | 9   | 9  | 1   | 5   | 78  | 7.8 |
| CAREER  | 65 | 29 | 1,271 | 19.5 | 130   | 469 | .277 | 44      | 206 | .214 | 40      | 59  | .678 | 40       | 80  | 120 | 1.8 | 66 | 1  | 44  | 86 | 3   | 28  | 344 | 5.3 |

PLAYER CAREER/SEASON STATS



KATELYN SIMPSON

11

GUARD

FRESHMAN | 5-9  
BALDWIN, N.Y. | BALDWIN

SINGLE-GAME SEASON HIGHS

Points: 4 vs Wilmington (11/10/23)  
Rebounds: 2 vs Wilmington (11/10/23)  
Assists: 1, 2x last at Assumption (11/28/23)  
Steals:  
Blocks: 1 vs Wilmington (11/10/23)  
FG made: 2 vs Wilmington (11/10/23)  
FG attempts: 3 vs Wilmington (11/10/23)  
3FG made:  
3FG attempts:  
FT made:  
FT attempts:

SINGLE-GAME CAREER HIGHS

Points: 4 vs Wilmington (11/10/23)  
Rebounds: 2 vs Wilmington (11/10/23)  
Assists: 1, 2x last at Assumption (11/28/23)  
Steals:  
Blocks: 1 vs Wilmington (11/10/23)  
FG made: 2 vs Wilmington (11/10/23)  
FG attempts: 3 vs Wilmington (11/10/23)  
3FG made:  
3FG attempts:  
FT made:  
FT attempts:

CAREER STATISTICS

| Year    | GP | GS | Min | Avg | Total |     |      | 3-Point |     |      | F-Throw |     |      | Rebounds |     |     |     |    |    |     |    |     |     | Pts | Avg |
|---------|----|----|-----|-----|-------|-----|------|---------|-----|------|---------|-----|------|----------|-----|-----|-----|----|----|-----|----|-----|-----|-----|-----|
|         |    |    |     |     | FG    | FGA | Pct  | FG      | FGA | Pct  | FT      | FTA | Pct  | Off      | Def | Tot | Avg | PF | FO | Ast | TO | Blk | Stl |     |     |
| 2023-24 | 4  | 0  | 22  | 5.5 | 2     | 5   | .400 | 0       | 0   | .000 | 0       | 0   | .000 | 1        | 2   | 3   | 0.8 | 2  | 0  | 3   | 3  | 1   | 0   | 4   | 1.0 |
| CAREER  | 4  | 0  | 22  | 5.5 | 2     | 5   | .400 | 0       | 0   | .000 | 0       | 0   | .000 | 1        | 2   | 3   | 0.8 | 2  | 0  | 3   | 3  | 1   | 0   | 4   | 1.0 |



SABIRA AHAYEVA

12

GUARD

JUNIOR | 5-7  
MINSK, BELARUS | MINSK #27 | DAWSON CC

SINGLE-GAME SEASON HIGHS

Points: 2 vs Wilmington (11/10/23)  
Rebounds: 1 vs Wilmington (11/10/23)  
Assists: 1 vs Georgian Court (12/17/23)  
Steals:  
Blocks:  
FG made:  
FG attempts:  
3FG made:  
3FG attempts:  
FT made: 2 vs Wilmington (11/10/23)  
FT attempts: 4 vs Wilmington (11/10/23)

SINGLE-GAME CAREER HIGHS

Points: 2 vs Wilmington (11/10/23)  
Rebounds: 1 vs Wilmington (11/10/23)  
Assists: 1 vs Georgian Court (12/17/23)  
Steals:  
Blocks:  
FG made:  
FG attempts:  
3FG made:  
3FG attempts:  
FT made: 2 vs Wilmington (11/10/23)  
FT attempts: 4 vs Wilmington (11/10/23)

CAREER STATISTICS

| Year    | GP | GS | Min | Avg | Total |     |      | 3-Point |     |      | F-Throw |     |      | Rebounds |     |     |     |    |    |     |    |     |     | Pts | Avg |
|---------|----|----|-----|-----|-------|-----|------|---------|-----|------|---------|-----|------|----------|-----|-----|-----|----|----|-----|----|-----|-----|-----|-----|
|         |    |    |     |     | FG    | FGA | Pct  | FG      | FGA | Pct  | FT      | FTA | Pct  | Off      | Def | Tot | Avg | PF | FO | Ast | TO | Blk | Stl |     |     |
| 2023-24 | 3  | 0  | 8   | 2.5 | 0     | 0   | .000 | 0       | 0   | .000 | 2       | 4   | .500 | 0        | 1   | 1   | 0.3 | 0  | 0  | 1   | 2  | 0   | 0   | 2   | 0.7 |
| CAREER  | 3  | 0  | 8   | 2.5 | 0     | 0   | .000 | 0       | 0   | .000 | 2       | 4   | .500 | 0        | 1   | 1   | 0.3 | 0  | 0  | 1   | 2  | 0   | 0   | 2   | 0.7 |

PLAYER CAREER/SEASON STATS



LINDSAY HOGAN

14

GUARD/FORWARD

SOPHOMORE | 6-1  
BAYVILLE, N.Y. | LOCUST VALLEY

SINGLE-GAME SEASON HIGHS

Points: 30 vs Wilmington (11/10/23)  
Rebounds: 12 vs Georgian Court (12/17/23)  
Assists: 3, 3x last at Saint Michael's (1/3/24)  
Steals: 3 vs Wilmington (11/10/23)  
Blocks: 3 at Saint Michael's (1/3/24)  
FG made: 10 vs Wilmington (11/10/23)  
FG attempts: 14 at Goldey-Beacom (11/11/23)  
3FG made: 5 vs Wilmington (11/10/23)  
3FG attempts: 9 at Saint Michael's (1/3/24)  
FT made: 5 vs Wilmington (11/10/23)  
FT attempts: 5 vs Wilmington (11/10/23)

SINGLE-GAME CAREER HIGHS

Points: 30 vs Wilmington (11/10/23)  
Rebounds: 12 vs Georgian Court (12/17/23)  
Assists: 3, 4x last at Saint Michael's (1/3/24)  
Steals: 3 vs Wilmington (11/10/23)  
Blocks: 3 at Saint Michael's (1/3/24)  
FG made: 10 vs Wilmington (11/10/23)  
FG attempts: 15 at Le Moyne (2/18/23)  
3FG made: 7 vs Dominican (1/4/23)  
3FG attempts: 9, 2x last at Saint Michael's (1/3/24)  
FT made: 5 vs Wilmington (11/10/23)  
FT attempts: 5 vs Wilmington (11/10/23)

CAREER STATISTICS

|         |    |    |     |      | -----Total----- |     |      | -----3-Point----- |     |      | -----F-Throw----- |     |      | -----Rebounds----- |     |     |     |    |    |     |    |     |     |     |      |
|---------|----|----|-----|------|-----------------|-----|------|-------------------|-----|------|-------------------|-----|------|--------------------|-----|-----|-----|----|----|-----|----|-----|-----|-----|------|
| Year    | GP | GS | Min | Avg  | FG              | FGA | Pct  | FG                | FGA | Pct  | FT                | FTA | Pct  | Off                | Def | Tot | Avg | PF | FO | Ast | TO | Blk | Stl | Pts | Avg  |
| 2022-23 | 27 | 14 | 536 | 19.8 | 49              | 127 | .386 | 24                | 71  | .338 | 10                | 13  | .769 | 10                 | 63  | 73  | 2.7 | 34 | 0  | 20  | 31 | 6   | 18  | 132 | 4.9  |
| 2023-24 | 10 | 10 | 320 | 32.0 | 47              | 109 | .431 | 20                | 49  | .408 | 13                | 15  | .867 | 9                  | 47  | 56  | 5.6 | 26 | 0  | 15  | 24 | 6   | 7   | 127 | 12.7 |
| CAREER  | 37 | 24 | 856 | 23.1 | 96              | 236 | .407 | 44                | 120 | .367 | 23                | 28  | .821 | 19                 | 110 | 129 | 3.5 | 60 | 0  | 35  | 55 | 12  | 25  | 259 | 7.0  |



MARY BACALIU

15

GUARD

SENIOR | 5-8  
WORCESTER, MASS. | PUTNAM SCIENCE ACADEMY | CONCORDIA

SINGLE-GAME SEASON HIGHS

Points:  
Rebounds:  
Assists:  
Steals:  
Blocks:  
FG made:  
FG attempts:  
3FG made:  
3FG attempts:  
FT made:  
FT attempts:

SINGLE-GAME CAREER HIGHS

Points: 35, vs Bloomfield (1/30/21)  
Rebounds: 8, at Bloomfield (2/25/21)  
Assists: 4, 5x last  
Steals: 6, 2x - last vs Georgian Court (3/12/21)  
Blocks: 3, at Georgian Court (2/6/21)  
FG made: 14, vs Bloomfield (1/30/21)  
FG attempts: 22, vs Bloomfield (1/30/21)  
3FG made: 5, vs Bridgeport (11/23/19)  
3FG attempts: 12, at Felician (2/20/21)  
FT made: 7, 2x - last vs Georgian Court (3/12/21)  
FT attempts: 11, vs Felician (2/9/21)

CAREER STATISTICS

|         |    |    |       |      | -----Total----- |     |      | -----3-Point----- |     |      | ----F-Throw---- |     |      | -----Rebounds----- |     |     |     |     |    |     |     |     |     |     |      |
|---------|----|----|-------|------|-----------------|-----|------|-------------------|-----|------|-----------------|-----|------|--------------------|-----|-----|-----|-----|----|-----|-----|-----|-----|-----|------|
| Year    | GP | GS | Min   | Avg  | FG              | FGA | Pct  | FG                | FGA | Pct  | FT              | FTA | Pct  | Off                | Def | Tot | Avg | PF  | FO | Ast | TO  | Blk | Stl | Pts | Avg  |
| 2019-20 | 26 | 2  | 477   | 18.3 | 39              | 131 | .298 | 16                | 70  | .229 | 24              | 42  | .571 | 12                 | 67  | 79  | 3.0 | 62  | 1  | 32  | 62  | 9   | 30  | 118 | 4.5  |
| 2020-21 | 10 | 10 | 313   | 31.3 | 53              | 140 | .379 | 16                | 66  | .242 | 30              | 50  | .600 | 5                  | 28  | 33  | 3.3 | 28  | 1  | 17  | 38  | 7   | 34  | 152 | 15.2 |
| 2021-22 | 18 | 4  | 241   | 13.9 | 17              | 54  | .315 | 8                 | 30  | .267 | 3               | 7   | .429 | 7                  | 18  | 25  | 1.4 | 30  | 0  | 6   | 24  | 1   | 14  | 45  | 2.5  |
| 2022-23 | 13 | 12 | 278   | 21.4 | 24              | 77  | .312 | 9                 | 37  | .243 | 10              | 16  | .625 | 2                  | 32  | 34  | 2.6 | 33  | 1  | 17  | 36  | 0   | 28  | 67  | 5.2  |
| at UNH  | 31 | 16 | 529   | 17.1 | 41              | 131 | .313 | 17                | 67  | .254 | 13              | 23  | .565 | 9                  | 50  | 59  | 1.9 | 63  | 1  | 23  | 60  | 1   | 42  | 112 | 3.6  |
| CAREER  | 67 | 28 | 1,319 | 19.7 | 133             | 402 | .331 | 49                | 203 | .241 | 67              | 115 | .583 | 26                 | 145 | 171 | 2.6 | 153 | 3  | 72  | 160 | 17  | 106 | 382 | 5.7  |



PLAYER CAREER/SEASON STATS



SYTLIANNA MANTZOURIS

21

GUARD

FRESHMAN | 5-7  
ALBANY, N.Y. | ALBANY ACADEMY

SINGLE-GAME SEASON HIGHS

Points: 2 vs Wilmington (11/10/23)  
Rebounds:  
Assists:  
Steals:  
Blocks:  
FG made: 1 vs Wilmington (11/10/23)  
FG attempts: 1, 2x last vs Georgian Court (12/17/23)  
3FG made:  
3FG attempts:  
FT made:  
FT attempts:

SINGLE-GAME CAREER HIGHS

Points: 2 vs Wilmington (11/10/23)  
Rebounds:  
Assists:  
Steals:  
Blocks:  
FG made: 1 vs Wilmington (11/10/23)  
FG attempts: 1, 2x last vs Georgian Court (12/17/23)  
3FG made:  
3FG attempts:  
FT made:  
FT attempts:

CAREER STATISTICS

| Year    | GP | GS | Min | Avg | Total |     |      | 3-Point |     |      | F-Throw |     |      | Rebounds |     |     |     | PF | FO | Ast | TO | Blk | Stl | Pts | Avg |
|---------|----|----|-----|-----|-------|-----|------|---------|-----|------|---------|-----|------|----------|-----|-----|-----|----|----|-----|----|-----|-----|-----|-----|
|         |    |    |     |     | FG    | FGA | Pct  | FG      | FGA | Pct  | FT      | FTA | Pct  | Off      | Def | Tot | Avg |    |    |     |    |     |     |     |     |
| 2023-24 | 3  | 0  | 6   | 2.1 | 1     | 2   | .500 | 0       | 0   | .000 | 0       | 0   | .000 | 0        | 0   | 0   | 0.0 | 1  | 0  | 0   | 1  | 0   | 0   | 2   | 0.7 |
| CAREER  | 3  | 0  | 6   | 2.1 | 1     | 2   | .500 | 0       | 0   | .000 | 0       | 0   | .000 | 0        | 0   | 0   | 0.0 | 1  | 0  | 0   | 1  | 0   | 0   | 2   | 0.7 |



MAKAELA JOHNSON

23

FORWARD

GRADUATE | 5-9  
HAMDEN, CONN. | HAMDEN | SAINT ROSE

SINGLE-GAME SEASON HIGHS

Points: 16 at Goldey-Beacom (11/11/23)  
Rebounds: 10 vs Wilmington (11/10/23)  
Assists: 4 at Goldey-Beacom (11/11/23)  
Steals: 1, 3x last vs So New Hampshire (12/2/23)  
Blocks: 2 vs Georgian Court (12/17/23)  
FG made: 6 at Goldey-Beacom (11/11/23)  
FG attempts: 11 at Goldey-Beacom (11/11/23)  
3FG made: 1, 4x last vs UDC (12/30/23)  
3FG attempts: 4, 2x last at Saint Michael's (1/3/24)  
FT made: 3 at Goldey-Beacom (11/11/23)  
FT attempts: 5 at Goldey-Beacom (11/11/23)

SINGLE-GAME CAREER HIGHS

Points: 26 vs American International (1/18/23)  
Rebounds: 10, 4x last vs Wilmington (11/10/23)  
Assists: 4, 2x last at Goldey-Beacom (11/11/23)  
Steals: 4 vs Adelphi (1/7/23)  
Blocks: 2, 2x last vs Georgian Court (12/17/23)  
FG made: 10, 2x last vs American International (1/18/23)  
FG attempts: 23 vs American International (1/18/23)  
3FG made: 3 vs Pace (2/18/23)  
3FG attempts: 8 vs American International (1/18/23)  
FT made: 4, 3x last at Southern New Hampshire (2/26/23)  
FT attempts: 6 vs Assumption (1/21/23)

CAREER STATISTICS

| Year    | GP | GS | Min   | Avg  | Total |     |      | 3-Point |     |      | F-Throw |     |      | Rebounds |     |     |     | PF | FO | Ast | TO | Blk | Stl | Pts | Avg  |
|---------|----|----|-------|------|-------|-----|------|---------|-----|------|---------|-----|------|----------|-----|-----|-----|----|----|-----|----|-----|-----|-----|------|
|         |    |    |       |      | FG    | FGA | Pct  | FG      | FGA | Pct  | FT      | FTA | Pct  | Off      | Def | Tot | Avg |    |    |     |    |     |     |     |      |
| 2019-20 | 10 | 0  | 66    | 6.6  | 5     | 17  | .294 | 3       | 9   | .333 | 2       | 5   | .400 | 3        | 7   | 10  | 1.0 | 6  | 0  | 6   | 5  | 1   | 3   | 15  | 1.5  |
| 2020-21 | 11 | 0  | 54    | 4.9  | 2     | 7   | .286 | 1       | 4   | .250 | 0       | 0   | .000 | 5        | 2   | 7   | 0.6 | 6  | 0  | 2   | 3  | 0   | 1   | 5   | 0.5  |
| 2021-22 | 20 | 0  | 167   | 8.4  | 18    | 52  | .346 | 10      | 29  | .345 | 6       | 8   | .750 | 3        | 20  | 23  | 1.2 | 16 | 0  | 4   | 17 | 2   | 11  | 52  | 2.6  |
| 2022-23 | 27 | 11 | 563   | 20.9 | 115   | 310 | .371 | 28      | 105 | .267 | 29      | 39  | .744 | 40       | 92  | 132 | 4.9 | 51 | 0  | 24  | 34 | 8   | 19  | 287 | 10.6 |
| 2022-23 | 10 | 7  | 216   | 21.6 | 22    | 60  | .367 | 5       | 25  | .200 | 7       | 10  | .700 | 7        | 41  | 48  | 4.8 | 19 | 1  | 13  | 18 | 3   | 4   | 56  | 5.6  |
| AT UNH  | 10 | 7  | 216   | 21.6 | 22    | 60  | .367 | 5       | 25  | .200 | 7       | 10  | .700 | 7        | 41  | 48  | 4.8 | 19 | 1  | 13  | 18 | 3   | 4   | 56  | 5.6  |
| CAREER  | 78 | 18 | 1,066 | 13.7 | 162   | 446 | .363 | 47      | 172 | .273 | 44      | 62  | .710 | 58       | 162 | 220 | 2.8 | 98 | 1  | 49  | 77 | 14  | 38  | 415 | 5.3  |

PLAYER CAREER/SEASON STATS



BIANCA PENDLETON

32

FORWARD

JUNIOR | 6-0

ACCOKEEK, MD. | BISHOP LUDDEN

SINGLE-GAME SEASON HIGHS

Points: 8 at Goldey-Beacom (11/11/23)  
Rebounds: 5 at Saint Michael's (1/3/24)  
Assists: vs Pace (11/21/23)  
Steals: 2 vs Wilmington (11/10/23)  
Blocks: 1, 2x last at Saint Michael's (1/3/24)  
FG made: 6 at Saint Michael's (1/3/24)  
FG attempts: 7 at Saint Michael's (1/3/24)  
3FG made:  
3FG attempts: 1 vs Pace (11/21/23)  
FT made: 6 at Goldey-Beacom (11/11/23)  
FT attempts: 7 at Goldey-Beacom (11/11/23)

SINGLE-GAME CAREER HIGHS

Points: 15 vs Adelphi (1/17/22)  
Rebounds: 5, 2x last at Saint Michael's (1/3/24)  
Assists: 2, 2x last vs Pace (11/21/23)  
Steals: 2, 2x last vs Wilmington (11/10/23)  
Blocks: 3 at Bloomfield (12/7/21)  
FG made: 6, 2x last at Saint Michael's (1/3/24)  
FG attempts: 8, 2x last 15 vs Adelphi (1/24/23)  
3FG made:  
3FG attempts: 1 vs Pace (11/21/23)  
FT made: 6 at Goldey-Beacom (11/11/23)  
FT attempts: 8 vs Bloomfield (11/13/21)

CAREER STATISTICS

| Year    | GP | GS | Min | Avg  | Total |     |      | 3-Point |     |      | F-Throw |     |      | Rebounds |     |     |     | PF | FO | Ast | TO | Blk | Stl | Pts | Avg |
|---------|----|----|-----|------|-------|-----|------|---------|-----|------|---------|-----|------|----------|-----|-----|-----|----|----|-----|----|-----|-----|-----|-----|
|         |    |    |     |      | FG    | FGA | Pct  | FG      | FGA | Pct  | FT      | FTA | Pct  | Off      | Def | Tot | Avg |    |    |     |    |     |     |     |     |
| 2021-22 | 21 | 0  | 140 | 6.7  | 12    | 40  | .300 | 0       | 0   | .000 | 18      | 29  | .621 | 12       | 16  | 28  | 1.3 | 32 | 0  | 6   | 18 | 4   | 2   | 42  | 2.0 |
| 2022-23 | 25 | 0  | 176 | 7.0  | 28    | 58  | .483 | 0       | 0   | .000 | 6       | 11  | .545 | 11       | 17  | 28  | 1.1 | 32 | 0  | 4   | 23 | 3   | 5   | 62  | 2.5 |
| 2023-24 | 9  | 0  | 129 | 14.3 | 15    | 27  | .556 | 0       | 1   | .000 | 16      | 23  | .696 | 11       | 13  | 24  | 2.7 | 22 | 1  | 4   | 12 | 1   | 6   | 46  | 5.1 |
| CAREER  | 55 | 0  | 444 | 8.1  | 55    | 125 | .440 | 0       | 1   | .000 | 40      | 63  | .635 | 34       | 46  | 80  | 1.5 | 86 | 1  | 14  | 53 | 8   | 13  | 150 | 2.7 |



AURORA DESHAIES

34

FORWARD

GRADUATE | 6-1

SYRACUSE, N.Y. | BISHOP LUDDEN

SINGLE-GAME SEASON HIGHS

Points: 19 vs UDC (12/30/23)  
Rebounds: 13, 2x last vs UDC (12/30/23)  
Assists: 3 vs UDC (12/30/23)  
Steals: 3 vs Georgian Court (12/17/23)  
Blocks: 3 at Bentley (11/15/23)  
FG made: 9 vs Georgian Court (12/17/23)  
FG attempts: 17, 2x last at Bentley (11/15/23)  
3FG made:  
3FG attempts:  
FT made: 6 vs Adelphi (12/5/23)  
FT attempts: 13 vs Adelphi (12/5/23)

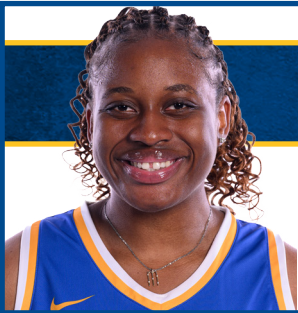
SINGLE-GAME CAREER HIGHS

Points: 31 at Franklin Pierce (2/21/22)  
Rebounds: 21 at Adelphi (2/19/22)  
Assists: 4 vs Bloomfield (11/19/22)  
Steals: 3, 6x last vs Georgian Court (12/17/23)  
Blocks: 3, 3x last at Bentley (11/15/23)  
FG made: 13 at Franklin Pierce (2/21/22)  
FG attempts: 18, 3x - last at Franklin Pierce (2/21/22)  
3FG made:  
3FG attempts: 1, 2x last at Chestnut Hill (2/9/23)  
FT made: 6, 2x last vs Adelphi (12/5/23)  
FT attempts: 13 vs Adelphi (12/5/23)

CAREER STATISTICS

| Year    | GP | GS | Min   | Avg  | Total |     |      | 3-Point |     |      | F-Throw |     |      | Rebounds |     |     |      | PF  | FO | Ast | TO  | Blk | Stl | Pts   | Avg  |
|---------|----|----|-------|------|-------|-----|------|---------|-----|------|---------|-----|------|----------|-----|-----|------|-----|----|-----|-----|-----|-----|-------|------|
|         |    |    |       |      | FG    | FGA | Pct  | FG      | FGA | Pct  | FT      | FTA | Pct  | Off      | Def | Tot | Avg  |     |    |     |     |     |     |       |      |
| 2019-20 | 26 | 23 | 703   | 27.0 | 130   | 230 | .565 | 0       | 0   | .000 | 37      | 60  | .617 | 82       | 111 | 193 | 7.4  | 52  | 0  | 14  | 59  | 12  | 20  | 297   | 11.4 |
| 2021-22 | 25 | 25 | 780   | 31.2 | 141   | 260 | .542 | 0       | 1   | .000 | 29      | 60  | .483 | 104      | 173 | 277 | 11.1 | 47  | 0  | 24  | 50  | 17  | 17  | 311   | 12.4 |
| 2022-23 | 27 | 27 | 871   | 32.3 | 158   | 262 | .603 | 0       | 1   | .000 | 38      | 69  | .551 | 109      | 182 | 291 | 10.8 | 75  | 2  | 27  | 50  | 14  | 22  | 354   | 13.1 |
| 2023-24 | 10 | 10 | 262   | 26.2 | 54    | 111 | .486 | 0       | 0   | .000 | 14      | 33  | .424 | 45       | 52  | 97  | 9.7  | 24  | 1  | 11  | 17  | 5   | 7   | 122   | 12.2 |
| CAREER  | 88 | 85 | 2,616 | 29.7 | 483   | 863 | .560 | 0       | 2   | .000 | 118     | 222 | .532 | 340      | 518 | 858 | 9.8  | 198 | 3  | 76  | 176 | 48  | 66  | 1,084 | 12.3 |

PLAYER CAREER/SEASON STATS



MERIT INNOCENT

44

FORWARD

FRESHMAN | 6-1  
DELTA STATE, NIGERA | BUSCHE ACADEMY

SINGLE-GAME SEASON HIGHS

Points:  
Rebounds: 1, 2x last at Goldey-Beacom (11/11/23)  
Assists:  
Steals:  
Blocks:  
FG made:  
FG attempts: 1, 2x - last vs Georgian Court (12/17/23)  
3FG made:  
3FG attempts:  
FT made:  
FT attempts:

SINGLE-GAME CAREER HIGHS

Points:  
Rebounds: 1, 2x last at Goldey-Beacom (11/11/23)  
Assists:  
Steals:  
Blocks:  
FG made:  
FG attempts: 1, 2x - last vs Georgian Court (12/17/23)  
3FG made:  
3FG attempts:  
FT made:  
FT attempts:

CAREER STATISTICS

| Year    | GP | GS | Min | Avg | Total |     |      | 3-Point |     |      | F-Throw |     |      | Rebounds |     |     |     | PF | FO | Ast | TO | Blk | Stl | Pts | Avg |
|---------|----|----|-----|-----|-------|-----|------|---------|-----|------|---------|-----|------|----------|-----|-----|-----|----|----|-----|----|-----|-----|-----|-----|
|         |    |    |     |     | FG    | FGA | Pct  | FG      | FGA | Pct  | FT      | FTA | Pct  | Off      | Def | Tot | Avg |    |    |     |    |     |     |     |     |
| 2023-24 | 4  | 0  | 16  | 4.0 | 0     | 2   | .000 | 0       | 0   | .000 | 0       | 0   | .000 | 1        | 1   | 2   | 0.5 | 1  | 0  | 0   | 2  | 0   | 0   | 0   | 0.0 |
| CAREER  | 4  | 0  | 16  | 4.0 | 0     | 2   | .000 | 0       | 0   | .000 | 0       | 0   | .000 | 1        | 1   | 2   | 0.5 | 1  | 0  | 0   | 2  | 0   | 0   | 0   | 0.0 |

GAME 11: NEW HAVEN AT AMERICAN INTERNATIONAL

New Haven vs Wilmington  
Nov. 10, 2023 • Wilmington, DE

Game 1

Date: 11/10/23  
Time: 6:05 PM  
Attendance: 175  
Site: Wilmington, DE  
Referee: L. Isabelle, P. Trujillo, D. Stefankiewicz

| Score By Period   | 1  | 2  | 3  | 4  | Total |
|-------------------|----|----|----|----|-------|
| New Haven         | 19 | 31 | 21 | 10 | 81    |
| Wilmington (Del.) | 6  | 7  | 2  | 6  | 21    |

New Haven 81

| #      | Player               | GS | MIN | FG    | 3PT   | FT  | ORB-DRB | REB   | PF | A  | TO | BLK | STL | PTS |
|--------|----------------------|----|-----|-------|-------|-----|---------|-------|----|----|----|-----|-----|-----|
| 14     | Lindsay Hogan        | *  | 29  | 10-11 | 5-5   | 5-5 | 2-1     | 3     | 0  | 2  | 2  | 0   | 3   | 30  |
| 34     | Aurora Deshaies      | *  | 19  | 6-13  | 0-0   | 2-2 | 5-4     | 9     | 1  | 2  | 2  | 0   | 0   | 14  |
| 23     | Makaela Johnson      | *  | 33  | 5-8   | 1-2   | 0-1 | 1-9     | 10    | 2  | 3  | 3  | 0   | 0   | 11  |
| 05     | Charlotte Bassett    | *  | 14  | 2-4   | 0-1   | 1-2 | 1-1     | 2     | 1  | 1  | 0  | 0   | 0   | 5   |
| 01     | Gabrielle Stickle    | *  | 28  | 0-1   | 0-0   | 2-2 | 0-0     | 0     | 0  | 5  | 0  | 0   | 6   | 2   |
| 32     | Bianca Pendleton     |    | 18  | 2-4   | 0-0   | 3-4 | 2-0     | 2     | 3  | 0  | 0  | 0   | 2   | 7   |
| 11     | Katelyn Simpson      |    | 10  | 2-3   | 0-0   | 0-0 | 1-1     | 2     | 0  | 1  | 0  | 1   | 0   | 4   |
| 02     | Eveani Okwuosa       |    | 21  | 1-2   | 0-0   | 0-1 | 0-3     | 3     | 1  | 1  | 1  | 3   | 2   | 2   |
| 10     | Nayeli Dowding       |    | 13  | 1-2   | 0-0   | 0-0 | 1-1     | 2     | 1  | 1  | 0  | 0   | 0   | 2   |
| 21     | Stylianna Mantzouris |    | 4   | 1-1   | 0-0   | 0-0 | 0-0     | 0     | 1  | 0  | 1  | 0   | 0   | 2   |
| 33     | Sabira Ahayeva       |    | 4   | 0-0   | 0-0   | 2-4 | 0-1     | 1     | 0  | 0  | 1  | 0   | 0   | 2   |
| 44     | Merit Innocent       |    | 7   | 0-1   | 0-0   | 0-0 | 0-1     | 1     | 0  | 0  | 2  | 0   | 0   | 0   |
| TM     | Team                 |    | 0   | 0-0   | 0-0   | 0-0 | 0-2     | 2     | 0  | 0  | 1  | 0   | 0   | 0   |
| Totals |                      |    | -   | 200   | 30-50 | 6-8 | 15-21   | 13-24 | 37 | 10 | 16 | 13  | 4   | 81  |

| Team Summary | FG           | 3PT       | FT          |
|--------------|--------------|-----------|-------------|
| 1st Quarter  | 6-12 50.00%  |           | 7-9 77.78%  |
| 2nd Quarter  | 13-16 81.25% |           | 1-1 100.00% |
| 3rd Quarter  | 7-15 46.67%  |           | 5-7 71.43%  |
| 4th Quarter  | 4-7 57.14%   |           | 2-4 50.00%  |
| Total        | 30-50 60.0%  | 6-8 75.0% | 15-21 71.4% |

Wilmington (Del.) 21

| #      | Player               | GS | MIN | FG   | 3PT  | FT  | ORB-DRB | REB   | PF | A  | TO | BLK | STL | PTS |
|--------|----------------------|----|-----|------|------|-----|---------|-------|----|----|----|-----|-----|-----|
| 04     | Amber Washington     | *  | 35  | 1-8  | 0-3  | 3-4 | 3-1     | 4     | 4  | 0  | 3  | 0   | 0   | 5   |
| 12     | Aniyah Bond          | *  | 27  | 2-11 | 0-5  | 0-0 | 3-2     | 5     | 2  | 0  | 2  | 0   | 1   | 4   |
| 11     | Cha'Nyah Dunston-Mas | *  | 24  | 2-7  | 0-4  | 0-0 | 2-0     | 2     | 2  | 0  | 2  | 0   | 0   | 4   |
| 01     | Daja Claiborne       | *  | 19  | 1-6  | 0-0  | 0-0 | 0-1     | 1     | 4  | 0  | 3  | 0   | 2   | 2   |
| 22     | Azayah Garrison      | *  | 16  | 0-1  | 0-0  | 0-0 | 1-1     | 1     | 1  | 0  | 2  | 0   | 0   | 0   |
| 20     | Trinity Brittingham  |    | 29  | 1-6  | 1-5  | 0-2 | 1-5     | 6     | 2  | 0  | 5  | 1   | 3   | 3   |
| 21     | Emani Lucas Davis    |    | 17  | 1-5  | 0-0  | 1-2 | 0-0     | 0     | 2  | 0  | 2  | 0   | 0   | 3   |
| 24     | Samiyah McFarlane    |    | 10  | 0-1  | 0-0  | 0-0 | 1-0     | 1     | 0  | 0  | 0  | 0   | 0   | 0   |
| 00     | Ameja Mack           |    | 8   | 0-1  | 0-0  | 0-0 | 0-1     | 1     | 0  | 0  | 1  | 0   | 0   | 0   |
| 23     | Mia Fuller           |    | 8   | 0-2  | 0-1  | 0-0 | 0-0     | 0     | 0  | 1  | 1  | 0   | 1   | 0   |
| 13     | Leanna Masseus       |    | 7   | 0-0  | 0-0  | 0-0 | 3-0     | 3     | 1  | 0  | 0  | 0   | 0   | 0   |
| TM     | Team                 |    | 0   | 0-0  | 0-0  | 0-0 | 1-2     | 3     | 0  | 0  | 2  | 0   | 0   | 0   |
| Totals |                      |    | -   | 200  | 8-48 | 1-8 | 4-8     | 15-12 | 27 | 18 | 1  | 23  | 1   | 21  |

| Team Summary | FG          | 3PT      | FT         |
|--------------|-------------|----------|------------|
| 1st Quarter  | 1-6 16.67%  |          | 0-1 0.00%  |
| 2nd Quarter  | 3-17 17.65% |          | 1-8 12.50% |
| 3rd Quarter  | 1-11 9.09%  |          | 0-5 0.00%  |
| 4th Quarter  | 3-14 21.43% |          | 0-4 0.00%  |
| Total        | 8-48 16.7%  | 1-8 5.6% | 4-8 50.0%  |

New Haven at Bentley  
Nov. 15, 2023 • Waltham, MA

Game 3



Official Basketball Box Score - Final  
New Haven at Bentley  
11/15/23 Charles A. Dana Center, Waltham, Mass.  
2023-24 Women's Basketball

Game Time: 6:00 PM  
Game Duration: 1:32  
Attendance: 210

Officials: Ashley Mayerjak, James Ryser, Kyle Wescott

New Haven - 48

Record: 2-1 (0-1)

| NO.    | Name              | Min     | FG    | 3P   | FT  | Rebounds  | Fouls   | TP | AS | TO | ST | Blocks | +/- |
|--------|-------------------|---------|-------|------|-----|-----------|---------|----|----|----|----|--------|-----|
|        |                   |         | M-A   | M-A  | M-A | OR DR TOT | PF FD   |    |    |    |    | BS BA  |     |
| 14     | Lindsay Hogan     | F 36:53 | 4-12  | 0-2  | 0-1 | 1 4 5     | 3 2     | 8  | 2  | 6  | 2  | 0      | -11 |
| 34     | Aurora Deshaies   | F 31:14 | 8-17  | 0-0  | 1-2 | 5 6 11    | 5 3     | 17 | 0  | 2  | 0  | 3      | -13 |
| 1      | Gabrielle Stickle | G 39:02 | 2-8   | 2-5  | 0-0 | 0 1 1     | 1 1     | 6  | 2  | 2  | 3  | 0      | -11 |
| 10     | Nayeli Dowding    | G 34:13 | 5-11  | 0-2  | 1-1 | 2 4 6     | 4 1     | 11 | 0  | 1  | 0  | 0      | -12 |
| 23     | Makaela Johnson   | G 23:25 | 1-3   | 0-1  | 0-0 | 0 2 2     | 1 1     | 2  | 1  | 1  | 0  | 1      | -14 |
| 02     | Eveani Okwuosa    |         | 08:19 | 0-1  | 0-0 | 0-0       | 0 1 1   | 0  | 0  | 0  | 0  | 0      | -13 |
| 32     | Bianca Pendleton  |         | 08:46 | 1-1  | 0-0 | 0 2 2     | 4 1     | 2  | 1  | 1  | 0  | 0      | 2   |
| 5      | Charlotte Bassett |         | 18:08 | 1-7  | 0-3 | 0-0       | 1 0 1   | 0  | 0  | 2  | 0  | 1      | 0   |
| Team   |                   |         |       |      |     | 2 2 4     | 0       | 0  | 0  | 0  |    |        |     |
| Totals |                   |         | 22-60 | 2-13 | 2-4 | 11 22 33  | 18 9 48 | 6  | 14 | 6  | 4  | 2      | -11 |

Technical Fouls:NONE

| Shooting By Period  | 1 <sup>st</sup> | 2 <sup>nd</sup> | 3 <sup>rd</sup> | 4 <sup>th</sup> | Total |
|---------------------|-----------------|-----------------|-----------------|-----------------|-------|
| 1 <sup>st</sup> FG% | 4-15 26.7%      |                 |                 |                 |       |
| 3PT%                | 0-4 0.0%        |                 |                 |                 |       |
| FT%                 | 0-0 0%          |                 |                 |                 |       |
| 2 <sup>nd</sup> FG% | 7-14 50.0%      |                 |                 |                 |       |
| 3PT%                | 1-2 50.0%       |                 |                 |                 |       |
| FT%                 | 1-3 33.3%       |                 |                 |                 |       |
| 3 <sup>rd</sup> FG% | 5-15 33.3%      |                 |                 |                 |       |
| 3PT%                | 0-5 0.0%        |                 |                 |                 |       |
| FT%                 | 0-0 0%          |                 |                 |                 |       |
| 4 <sup>th</sup> FG% | 6-16 37.5%      |                 |                 |                 |       |
| 3PT%                | 1-2 50.0%       |                 |                 |                 |       |
| FT%                 | 1-1 100%        |                 |                 |                 |       |
| GM FG%              | 22-60 36.7%     |                 |                 |                 |       |
| 3PT%                | 2-13 15.4%      |                 |                 |                 |       |
| FT%                 | 2-4 50.0%       |                 |                 |                 |       |

Dead Ball Rebounds: 1, 0

Bentley - 59

Record: 3-0 (1-0)

| NO.    | Name            | Min     | FG    | 3P   | FT    | Rebounds  | Fouls | TP  | AS | TO | ST | Blocks | +/- |
|--------|-----------------|---------|-------|------|-------|-----------|-------|-----|----|----|----|--------|-----|
|        |                 |         | M-A   | M-A  | M-A   | OR DR TOT | PF FD |     |    |    |    | BS BA  |     |
| 10     | Julia Elle      | F 15:53 | 1-6   | 0-0  | 0-0   | 1 0 1     | 1 2   | 2   | 0  | 2  | 1  | 0      | -15 |
| 25     | Maggie Whitmore | F 29:01 | 4-7   | 0-1  | 2-2   | 1 3 4     | 1 1   | 10  | 3  | 2  | 1  | 0      | 0   |
| 3      | Cassidy Yeomans | G 30:23 | 2-6   | 1-4  | 2-2   | 1 1 2     | 1 1   | 7   | 3  | 0  | 1  | 0      | 0   |
| 4      | Ella Thompson   | G 36:28 | 3-11  | 1-6  | 0-0   | 0 5 5     | 0 3   | 7   | 2  | 2  | 1  | 0      | 0   |
| 5      | Amanda Kabantu  | G 18:35 | 1-4   | 0-0  | 2-2   | 1 1 2     | 0 1   | 4   | 1  | 2  | 2  | 0      | 0   |
| 12     | Niya Morgan     |         | 22:55 | 3-7  | 2-5   | 0 0 5     | 1 0   | 8   | 1  | 2  | 1  | 1      | 0   |
| 21     | Ciara Norman    |         | 24:09 | 4-7  | 0-0   | 5-5       | 2 5 7 | 3 8 | 13 | 2  | 2  | 0      | 0   |
| 15     | Kylie DuCharme  |         | 19:08 | 3-5  | 0-1   | 0 0 5     | 7 2   | 1   | 6  | 2  | 0  | 1      | 1   |
| 14     | Quincy Ji       |         | 00:44 | 0-0  | 0-0   | 0 0 0     | 0 0   | 0   | 0  | 0  | 0  | 0      | 0   |
| 22     | Andrene Thomas  |         | 00:44 | 0-0  | 0-0   | 0 0 0     | 0 0   | 0   | 0  | 0  | 0  | 0      | 0   |
| 23     | Norah Saluja    |         | 00:44 | 0-0  | 0-0   | 0 0 1     | 1 0   | 0   | 0  | 0  | 0  | 0      | 0   |
| 32     | Mikela Cooper   |         | 00:44 | 0-0  | 0-0   | 0 0 0     | 0 0   | 0   | 0  | 0  | 0  | 0      | 0   |
| 2      | Grace Klonsky   |         | 00:32 | 0-0  | 0-0   | 0 0 0     | 0 0   | 1   | 2  | 0  | 0  | 0      | -1  |
| Team   |                 |         |       |      |       | 1 2 3     | 0     | 0   | 1  |    |    |        |     |
| Totals |                 |         | 21-53 | 4-17 | 13-13 | 9 28 37   | 9 18  | 59  | 14 | 13 | 8  | 2      | 11  |

Technical Fouls:NONE

| Shooting By Period  | 1 <sup>st</sup> | 2 <sup>nd</sup> | 3 <sup>rd</sup> | 4 <sup>th</sup> | Total |
|---------------------|-----------------|-----------------|-----------------|-----------------|-------|
| 1 <sup>st</sup> FG% | 9-14 64.3%      |                 |                 |                 |       |
| 3PT%                | 2-3 66.7%       |                 |                 |                 |       |
| FT%                 | 1-1 100%        |                 |                 |                 |       |
| 2 <sup>nd</sup> FG% | 6-10 10.0%      |                 |                 |                 |       |
| 3PT%                | 0-6 0.0%        |                 |                 |                 |       |
| FT%                 | 2-2 100%        |                 |                 |                 |       |
| 3 <sup>rd</sup> FG% | 6-16 37.5%      |                 |                 |                 |       |
| 3PT%                | 0-3 0.0%        |                 |                 |                 |       |
| FT%                 | 2-2 100%        |                 |                 |                 |       |
| 4 <sup>th</sup> FG% | 5-13 38.5%      |                 |                 |                 |       |
| 3PT%                | 2-5 40.0%       |                 |                 |                 |       |
| FT%                 | 8-8 100%        |                 |                 |                 |       |
| GM FG%              | 21-53 39.6%     |                 |                 |                 |       |
| 3PT%                | 4-17 23.5%      |                 |                 |                 |       |
| FT%                 | 13-13 100.0%    |                 |                 |                 |       |

Dead Ball Rebounds: 1, 0

|                  | UNH                       | BEN                       |
|------------------|---------------------------|---------------------------|
| Biggest lead     | 3 (3 <sup>rd</sup> 8:24)  | 17 (4 <sup>th</sup> 2:16) |
| Best Scoring Run | 11 (2 <sup>nd</sup> 2:53) | 14 (1 <sup>st</sup> 1:11) |
| Lead Changes     | 4                         |                           |
| Times Tied       | 2                         |                           |
| Time with Lead   | 03:13                     | 36:20                     |

| Points from Turnovers | UNH | BEN |
|-----------------------|-----|-----|
| Paint                 | 38  | 30  |
| Second Chance         | 10  | 2   |
| Fast Breaks           | 0   | 6   |
| Bench                 | 4   | 29  |

| Period by Period Scoring | 1st | 2nd | 3rd | 4th | TOT |
|--------------------------|-----|-----|-----|-----|-----|
| UNH                      | 8   | 16  | 10  | 14  | 48  |
| BEN                      | 21  | 4   | 14  | 20  | 59  |

New Haven at Goldey-Beacom  
Nov. 11, 2023 • Wilmington, DE

Game 2

Date: 11/11/23  
Time: 1:00 PM  
Attendance: 115  
Site: Wilmington, DE  
Referee: J. Kallis, A. Stevenson, S. Brown

| Score By Period | 1  | 2  | 3  | 4  | Total |
|-----------------|----|----|----|----|-------|
| New Haven       | 25 | 23 | 25 | 12 | 85    |
| Goldey-Beacom   | 16 | 13 | 14 | 14 | 57    |

New Haven 85

| #      | Player               | GS | MIN | FG   | 3PT   | FT   | ORB-DRB | REB   | PF | A  | TO | BLK | STL | PTS |
|--------|----------------------|----|-----|------|-------|------|---------|-------|----|----|----|-----|-----|-----|
| 14     | Lindsay Hogan        | *  | 34  | 8-14 | 4-6   | 2-2  | 1-3     | 4     | 4  | 0  | 1  | 1   | 1   | 22  |
| 34     | Aurora Deshaies      | *  | 27  | 8-17 | 0-0   | 1-4  | 7-6     | 13    | 3  | 0  | 3  | 1   | 0   | 17  |
| 23     | Makaela Johnson      | *  | 33  | 6-11 | 1-2   | 3-5  | 3-6     | 9     | 2  | 4  | 0  | 0   | 0   | 16  |
| 01     | Gabrielle Stickle    | *  | 35  | 2-6  | 0-1   | 2-3  | 0-6     | 6     | 0  | 8  | 0  | 0   | 0   | 6   |
| 05     | Charlotte Bassett    | *  | 15  | 0-2  | 0-0   | 0-0  | 2-3     | 5     | 1  | 1  | 1  | 0   | 1   | 0   |
| 10     | Nayeli Dowding       |    | 26  | 5-14 | 2-6   | 2-2  | 1-3     | 4     | 2  | 1  | 0  | 0   | 2   | 14  |
| 32     | Bianca Pendleton     |    | 9   | 1-1  | 0-0   | 6-7  | 2-0     | 2     | 5  | 0  | 2  | 1   | 0   | 8   |
| 02     | Eveani Okwuosa       |    | 11  | 1-2  | 0-0   | 0-0  | 0-1     | 1     | 1  | 0  | 0  | 0   | 1   | 2   |
| 11     | Katelyn Simpson      |    | 4   | 0-1  | 0-0   | 0-0  | 0-0     | 0     | 0  | 1  | 1  | 0   | 0   | 0   |
| 44     | Merit Innocent       |    | 4   | 0-0  | 0-0   | 0-0  | 1-0     | 1     | 0  | 0  | 0  | 0   | 0   | 0   |
| 12     | Sabira Ahayeva       |    | 1   | 0-0  | 0-0   | 0-0  | 0-0     | 0     | 0  | 0  | 0  | 0   | 0   | 0   |
| 21     | Stylianna Mantzouris |    | 1   | 0-0  | 0-0   | 0-0  | 0-0     | 0     | 0  | 0  | 0  | 0   | 0   | 0   |
| TM     | Team                 |    | 0   | 0-0  | 0-0   | 0-0  | 3-2     | 5     | 0  | 0  | 1  | 0   | 0   | 0   |
| Totals |                      |    | -   | 200  | 31-68 | 7-15 | 16-23   | 20-30 | 50 | 18 | 15 | 9   | 3   | 85  |

| Team Summary | FG           | 3PT        | FT          |
|--------------|--------------|------------|-------------|
| 1st Quarter  | 10-19 52.63% |            | 3-5 60.00%  |
| 2nd Quarter  | 7-16 43.75%  |            | 2-4 50.00%  |
| 3rd Quarter  | 10-18 55.56% |            | 1-2 50.00%  |
| 4th Quarter  | 4-15 26.67%  |            | 1-4 25.00%  |
| Total        | 31-68 45.6%  | 7-15 46.7% | 16-23 69.6% |

Goldey-Beacom 57

| #      | Player          | GS | MIN | FG    | 3PT   | FT   | ORB-DRB | REB | PF | A  | TO | BLK | STL | PTS |
|--------|-----------------|----|-----|-------|-------|------|---------|-----|----|----|----|-----|-----|-----|
| 10     | Katie Yoder     | *  | 17  | 5-8   | 4-6   | 0-0  | 0-1     | 1   | 4  | 0  | 1  | 1   | 0   | 14  |
| 30     | Rory Ciszkowski | *  | 17  | 3-4   | 3-4   | 2-2  | 0-3     | 3   | 4  | 1  | 2  | 0   | 0   | 11  |
| 30     | Janiya Stevens  | *  | 18  | 2-7   | 0-0   | 2-2  | 1-3     | 4   | 2  | 1  | 1  | 1   | 0   | 6   |
| 15     | Karlee Lemon    | *  | 30  | 1-5   | 1-4   | 0-0  | 0-1     | 1   | 2  | 1  | 1  | 0   | 1   | 3   |
| 01     | Jenissa Varela  | *  | 17  | 1-4   | 0-3   | 0-0  | 0-3     | 3   | 3  | 4  | 4  | 0   | 0   | 2   |
| 21     | Zhuri Cannon    |    | 11  | 3-6   | 0-1   | 1-2  | 0-1     | 1   | 3  | 0  | 0  | 0   | 0   | 7   |
| 04     | Genesis Garcia  |    | 15  | 2-5   | 1-2   | 0-1  | 0-1     | 1   | 1  | 2  | 3  | 0   | 0   | 5   |
| 23     | Azuri Abraham   |    | 22  | 1-6   | 0-2   | 1-3  | 2-1     | 3   | 2  | 1  | 2  | 1   | 1   | 3   |
| 25     | Tamea El        |    | 13  | 1-2   | 1-2   | 0-0  | 1-2     | 3   | 2  | 0  | 0  | 0   | 0   | 3   |
| 02     | Julie McCarron  |    | 12  | 1-3   | 0-1   | 1-2  | 0-0     | 0   | 2  | 0  | 0  | 0   | 0   | 3   |
| 02     | Farrah White    |    | 10  | 0-1   | 0-0   | 0-2  | 0-1     | 1   | 0  | 2  | 1  | 0   | 0   | 0   |
| 14     | Maddy Hackman   |    | 10  | 0-2   | 0-1   | 0-0  | 1-4     | 5   | 2  | 0  | 0  | 0   | 0   | 0   |
| 24     | Azra Ozgul      |    | 8   | 0-1   | 0-0   | 0-0  | 0-0     | 0   | 0  | 0  | 0  | 0   | 0   | 0   |
| TM     | Team            |    | 0   | 0-0   | 0-0   | 0-0  | 3-0     | 3   | 0  | 0  | 0  | 0   | 0   | 0   |
| Totals |                 | -  | 200 | 20-54 | 10-26 | 7-14 | 8-21    | 29  | 27 | 12 | 15 | 3   | 2   | 57  |




## Game 5

[illegible]

| Assumption - 70       |       | Record: 4-1 (2-1) |           |           |                   |    |              |    |    |    |    |                 |   |     |   |    |
|-----------------------|-------|-------------------|-----------|-----------|-------------------|----|--------------|----|----|----|----|-----------------|---|-----|---|----|
| NO. Name              | Min   | FG<br>M-A         | 3P<br>M-A | FT<br>M-A | Rebounds<br>OR DR |    | Fouls<br>P-F | TP | AS | TO | ST | Blocks<br>BS BA |   | +/- |   |    |
| 24 Teagan Kamm        | 14:02 | 2-2               | 0-0       | 0-0       | 0                 | 1  | 2            | 4  | 1  | 0  | 0  | 0               | 0 | 7   |   |    |
| 10 Amanda Mieczkowski | 22:03 | 2-5               | 1-3       | 2-2       | 0                 | 2  | 0            | 3  | 7  | 6  | 1  | 0               | 0 | 10  |   |    |
| 14 Marina Callahan    | 33:14 | 6-10              | 1-1       | 4-4       | 2                 | 7  | 2            | 3  | 17 | 5  | 2  | 2               | 0 | 30  |   |    |
| 34 Emma Dahl          | 24:24 | 3-6               | 1-4       | 1-1       | 0                 | 1  | 1            | 0  | 2  | 8  | 1  | 1               | 0 | 21  |   |    |
| 44 Molly Stokes       | 36:06 | 4-14              | 3-7       | 0-0       | 0                 | 2  | 2            | 1  | 1  | 19 | 1  | 0               | 1 | 30  |   |    |
| 21 Teagan Curran      | 16:50 | 0-3               | 0-3       | 0-0       | 0                 | 0  | 0            | 1  | 0  | 0  | 3  | 2               | 0 | 11  |   |    |
| 33 Kaijeh Hall        | 24:28 | 4-5               | 0-0       | 4-5       | 2                 | 11 | 13           | 2  | 4  | 12 | 3  | 2               | 0 | 19  |   |    |
| 22 Maeve Moriarty     | 08:16 | 0-0               | 0-0       | 1-2       | 0                 | 2  | 2            | 1  | 1  | 0  | 2  | 0               | 0 | 2   |   |    |
| 4 Grace Leary         | 17:57 | 0-2               | 0-2       | 2-2       | 0                 | 0  | 0            | 1  | 3  | 2  | 2  | 2               | 0 | 19  |   |    |
| 11 Avah Ingalls       | 01:20 | 0-0               | 0-0       | 0-0       | 0                 | 0  | 0            | 0  | 0  | 0  | 0  | 0               | 0 | -2  |   |    |
| 12 Kara Bremser       | 01:20 | 0-0               | 0-0       | 0-0       | 0                 | 0  | 0            | 1  | 0  | 0  | 0  | 0               | 0 | -2  |   |    |
| Team                  |       |                   |           |           | 0                 | 3  | 3            |    | 0  | 1  |    |                 |   |     |   |    |
| Totals                |       | 25-47             | 6-20      | 14-16     | 4                 | 29 | 33           | 11 | 19 | 70 | 22 | 14              | 5 | 4   | 0 | 29 |
| Technical Fouls: NONE |       |                   |           |           |                   |    |              |    |    |    |    |                 |   |     |   |    |

|                  | UNH                       | ASM                       | Points from Turnovers | UNH | ASM | Period by Period Scoring |                 |                 |                 |     |
|------------------|---------------------------|---------------------------|-----------------------|-----|-----|--------------------------|-----------------|-----------------|-----------------|-----|
| Biggest lead     | 0 (1 <sup>st</sup> 10:00) | 31 (4 <sup>th</sup> 1:21) | UNH                   | 22  |     | 1 <sup>st</sup>          | 2 <sup>nd</sup> | 3 <sup>rd</sup> | 4 <sup>th</sup> | TOT |
| Best Scoring Run | 6 (2 <sup>nd</sup> 6:07)  | 11 (4 <sup>th</sup> 1:21) | Paint                 | 20  | 32  |                          |                 |                 |                 |     |
| Lead Changes     |                           |                           | Second Chance         | 9   | 5   | UNH                      | 7               | 10              | 13              | 11  |
| Times Tied       | 0                         |                           | Fast Breaks           | 2   | 16  |                          |                 |                 |                 |     |
| Time with Lead   | 00:00                     | 39:14                     | Bench                 | 18  | 15  | ASM                      | 18              | 16              | 17              | 19  |

**New Haven vs Adelphi**  
**Dec. 5, 2023 • West Haven, CT**



Official Basketball Box Score - Final

Adelphi at New Haven

12/05/23 Charger Gymnasium, West Haven

2023-24 Women's Basketball

Game Time: 5:30 PM

Game Duration: 1:39

Attendance: 165

Officials: Christina Stranney, Adam Bernstein, Kathy Allen

Adelphi - 56

Record: 2-6 (2-3)

| NO.    | Name              | F | Min   | FG<br>M/A | 3P<br>M/A | FT<br>M/A | Rebounds<br>OR DR TOT | Fouls<br>PF | TO | TP | AS | TS | Blocks<br>BS BA | +/- |   |    |   |    |
|--------|-------------------|---|-------|-----------|-----------|-----------|-----------------------|-------------|----|----|----|----|-----------------|-----|---|----|---|----|
| 23     | Fruzsina Horvath  | F | 16:03 | 0-1       | 0-0       | 0-0       | 2                     | 2           | 4  | 2  | 1  | 0  | 0               | -8  |   |    |   |    |
| 33     | Jenna Jordan      | F | 36:03 | 6-16      | 0-0       | 1-2       | 5                     | 5           | 10 | 4  | 23 | 0  | 2               | 0   | 0 | 9  |   |    |
| 1      | Kaitlyn O'Connell | G | 37:03 | 8-15      | 3-6       | 4-6       | 0                     | 0           | 0  | 3  | 4  | 2  | 2               | 2   | 0 | 10 |   |    |
| 14     | Rolanda Robinson  | G | 40:00 | 5-14      | 0-5       | 0-3       | 4                     | 7           | 11 | 3  | 5  | 10 | 1               | 6   | 1 | 0  | 7 |    |
| 15     | Christina Sanchez | G | 37:05 | 1-6       | 0-1       | 0-1       | 1                     | 3           | 4  | 3  | 1  | 2  | 1               | 0   | 4 | 1  | 1 | 4  |
| 3      | Lauren Beberman   | L | 12:37 | 1-3       | 0-1       | 0-0       | 1                     | 2           | 3  | 1  | 1  | 2  | 1               | 0   | 0 | 0  | 1 | 2  |
| 2      | Isabella Ascencio | L | 16:01 | 2-4       | 0-0       | 0-0       | 0                     | 1           | 1  | 2  | 1  | 4  | 3               | 1   | 1 | 0  | 0 | 15 |
| 4      | Carmen Kweti      | F | 05:08 | 1-1       | 0-0       | 0-0       | 0                     | 0           | 2  | 2  | 1  | 1  | 2               | 0   | 1 | 0  | 0 | -4 |
| Team   |                   |   |       |           |           |           | 1                     | 3           | 4  | 0  | 0  | 1  |                 |     |   |    |   |    |
| Totals |                   |   | 24-60 | 3-13      | 5-12      | 14        | 25                    | 39          | 19 | 16 | 56 | 8  | 13              | 9   | 1 | 2  | 7 |    |

Technical Fouls:NONE

Shooting By Period

|                     |       |       |
|---------------------|-------|-------|
| 1 <sup>st</sup> FG% | 6-15  | 40.0% |
| 3PT%                | 2-5   | 40.0% |
| FT%                 | 1-2   | 50%   |
| 2 <sup>nd</sup> FG% | 4-14  | 28.6% |
| 3PT%                | 0-0   | 0%    |
| FT%                 | 0-0   | 0%    |
| 3 <sup>rd</sup> FG% | 4-13  | 30.8% |
| 3PT%                | 0-2   | 0%    |
| FT%                 | 2-2   | 100%  |
| 4 <sup>th</sup> FG% | 10-18 | 55.6% |
| 3PT%                | 1-5   | 20.0% |
| FT%                 | 2-8   | 25%   |
| GM FG%              | 24-60 | 40.0% |
| 3PT%                | 3-13  | 23.1% |
| FT%                 | 5-12  | 41.7% |


Dead Ball Rebounds: 3, 0

| New Haven - 49        |                   |         | Record: 2-5 (0-5) |     |       |     |    |    |          |    |    |       |    |    |    |     |    |        |  |     |
|-----------------------|-------------------|---------|-------------------|-----|-------|-----|----|----|----------|----|----|-------|----|----|----|-----|----|--------|--|-----|
| NO.                   | Name              | Min     | FG                |     | 3P    |     | FT |    | Rebounds |    |    | Fouls |    | TP | AS | TO  | ST | Blocks |  | +/- |
|                       |                   |         | M-A               | P-A | M-A   | M-A | OR | DR | TOT      | PF | FD | BS    | BA |    |    |     |    |        |  |     |
| 14                    | Lindsay Hogan     | F 29:54 | 2-8               | 1-2 | 2-2   | 0   | 4  | 4  | 4        | 1  | 7  | 0     | 5  | 0  | 1  | 0   | -8 |        |  |     |
| 34                    | Aurora Deshaies   | F 32:27 | 5-10              | 0-0 | 6-13  | 5   | 6  | 12 | 2        | 9  | 16 | 1     | 0  | 2  | 0  | -10 |    |        |  |     |
| 1                     | Gabrielle Stickle | G 35:10 | 2-10              | 0-3 | 3-3   | 0   | 6  | 7  | 3        | 4  | 7  | 3     | 3  | 0  | 0  | -1  |    |        |  |     |
| 2                     | Eveant Okwuosa    | G 13:52 | 1-3               | 0-0 | 0-0   | 1   | 0  | 1  | 1        | 1  | 2  | 0     | 0  | 0  | 0  | -1  |    |        |  |     |
| 23                    | Makaela Johnson   | G 24:50 | 0-4               | 0-1 | 2-2   | 1   | 2  | 3  | 3        | 1  | 2  | 0     | 1  | 1  | 0  | -7  |    |        |  |     |
| 5                     | Charlotte Bassett | 34:55   | 2-4               | 0-0 | 2-2   | 3   | 4  | 7  | 2        | 3  | 6  | 3     | 3  | 1  | 0  | -4  |    |        |  |     |
| 10                    | Nayeli Dowding    | 21:36   | 3-8               | 1-2 | 0-0   | 0   | 2  | 2  | 1        | 0  | 7  | 0     | 1  | 0  | 1  | -2  |    |        |  |     |
| 32                    | Bianca Pendleton  | 07:16   | 1-3               | 0-0 | 0-0   | 1   | 1  | 2  | 0        | 0  | 2  | 0     | 2  | 0  | 0  | -4  |    |        |  |     |
| Team                  |                   |         |                   |     |       | 2   |    |    |          |    |    | 0     | 2  |    |    |     |    |        |  |     |
| Totals                |                   |         | 16:50             | 2-9 | 15-22 | 13  | 26 | 39 | 16       | 19 | 49 | 7     | 17 | 4  | 2  | 1   | -7 |        |  |     |
| Technical Fouls: NONE |                   |         |                   |     |       |     |    |    |          |    |    |       |    |    |    |     |    |        |  |     |

|                  | ADE                       | UNH                       | Points from Turnovers | ADE | UNH | Period by Period Scoring |     |     |     |         |
|------------------|---------------------------|---------------------------|-----------------------|-----|-----|--------------------------|-----|-----|-----|---------|
| Biggest lead     | 8 (4 <sup>th</sup> 0:45)  | 11 (3 <sup>rd</sup> 3:53) | Paint                 | 13  | 10  |                          | 1st | 2nd | 3rd | 4th TOT |
| Best Scoring Run | 13 (4 <sup>th</sup> 8:17) | 6 (2 <sup>nd</sup> 7:03)  | Second Chance         | 40  | 26  | ADE                      | 15  | 8   | 10  | 23 56   |
| Lead Changes     |                           |                           | Fast Breaks           | 11  | 9   | UNH                      | 13  | 18  | 10  | 8 49    |
| Times Tied       | 3                         |                           | Bench                 | 13  | 2   |                          |     |     |     |         |
| Time with Lead   | 16:49                     | 19:57                     |                       | 8   | 15  |                          |     |     |     |         |

**New Haven vs Southern New Hampshire**  
**Dec. 2, 2023 • West Haven, CT**

## Game 6



Official Basketball Box Score - Final

Southern N.H. at New Haven

12/02/23 Hazell Athletic Center, West Haven, CT

2023-24 Women's Basketball

Game Time: 1:30 PM

Game Duration: 1:17

Attendance: 167

Southern N.H. - 65

Record: 4-1 (4-1)

Officials: Lori Ricci, Paul Semenkow, Christopher Bruno

| NO.    | Name               | Min     | FG<br>M-A | 3P<br>M-A | FT<br>M-A | Rebounds<br>OR DR TOT | Fouls<br>PF FD | TS | AS | TO | ST | Blocks<br>BS BA | +/- |   |    |    |   |
|--------|--------------------|---------|-----------|-----------|-----------|-----------------------|----------------|----|----|----|----|-----------------|-----|---|----|----|---|
| 14     | Jess Knight        | F 34:28 | 10-16     | 1-1       | 0-2       | 1                     | 6              | 7  | 2  | 3  | 21 | 1               | 2   | 0 | 10 |    |   |
| 15     | Meghan Gordon      | F 33:43 | 2-4       | 0-1       | 5-8       | 0                     | 9              | 9  | 1  | 6  | 9  | 2               | 3   | 0 | 0  | 10 |   |
| 13     | Macy Spinks        | G 23:30 | 0-2       | 0-1       | 0-0       | 0                     | 0              | 0  | 0  | 2  | 0  | 2               | 1   | 0 | 0  | 4  |   |
| 22     | Arianna Timberlake | G 39:52 | 8-14      | 5-8       | 4-7       | 0                     | 1              | 1  | 3  | 8  | 25 | 2               | 3   | 2 | 0  | 0  | 7 |
| 23     | Julia Colby        | G 37:32 | 2-4       | 0-1       | 2-6       | 0                     | 2              | 2  | 2  | 5  | 6  | 7               | 1   | 1 | 0  | 3  |   |
| 20     | Sydney DeVries     | 07:45   | 1-1       | 0-0       | 1-2       | 1                     | 1              | 2  | 3  | 2  | 3  | 0               | 0   | 0 | 0  | -5 |   |
| 32     | Abby Wager         | 19:08   | 0-1       | 0-1       | 1-2       | 0                     | 1              | 1  | 1  | 2  | 1  | 2               | 1   | 0 | 1  | 0  |   |
| 21     | Madison Hughes     | 03:25   | 0-0       | 0-0       | 0-0       | 0                     | 0              | 0  | 0  | 0  | 0  | 0               | 0   | 1 | 0  | -2 |   |
| 5      | Hailey Sherrick    | 00:37   | 0-0       | 0-0       | 0-0       | 0                     | 0              | 0  | 0  | 1  | 0  | 0               | 0   | 0 | 0  | -2 |   |
| Team   |                    |         |           |           |           | 1                     | 0              | 1  | 0  | 0  | 0  | 0               | 0   |   |    |    |   |
| Totals |                    |         | 23-42     | 6-13      | 13-27     | 3                     | 20             | 23 | 15 | 26 | 65 | 11              | 4   | 5 | 0  | 5  |   |

Technical Fouls:NONE

Shooting By Period

|                     |       |        |
|---------------------|-------|--------|
| 1 <sup>st</sup> FG% | 7-12  | 58.3%  |
| 3PT%                | 1-4   | 25.0%  |
| FT%                 | 0-0   | 0%     |
| 2 <sup>nd</sup> FG% | 5-12  | 41.7%  |
| 3PT%                | 2-5   | 40.0%  |
| FT%                 | 3-4   | 75%    |
| 3 <sup>rd</sup> FG% | 6-10  | 60.0%  |
| 3PT%                | 2-2   | 100.0% |
| FT%                 | 1-2   | 50%    |
| 4 <sup>th</sup> FG% | 5-8   | 62.5%  |
| 3PT%                | 1-2   | 50.0%  |
| FT%                 | 9-21  | 42.9%  |
| GM FG%              | 23-42 | 54.8%  |
| 3PT%                | 6-13  | 46.2%  |
| FT%                 | 13-27 | 48.1%  |

Dead Ball Rebounds: 7, 0

| New Haven - 60        |                   |         | Record: 2-4 (0-4) |           |           |          |    |     |       |    |    |    |    |    |                 |   |     |
|-----------------------|-------------------|---------|-------------------|-----------|-----------|----------|----|-----|-------|----|----|----|----|----|-----------------|---|-----|
| NO.                   | Name              | Min     | FG<br>M-A         | 3P<br>M-A | FT<br>M-A | Rebounds |    |     | Fouls |    | TP | AS | TO | ST | Blocks<br>BS BA |   | +/- |
|                       |                   |         |                   |           |           | OR       | DR | TOT | PF    | FD |    |    |    |    |                 |   |     |
| 14                    | Lindsay Hogan     | F 38:47 | 6-10              | 3-3       | 4-4       | 2        | 6  | 8   | 4     | 5  | 19 | 1  | 2  | 0  | 0               | 0 | -7  |
| 34                    | Aurora Deshaies   | F 23:30 | 3-10              | 0-0       | 0-0       | 3        | 3  | 6   | 3     | 0  | 6  | 1  | 2  | 1  | 0               | 2 | -10 |
| 1                     | Gabrielle Stickle | G 36:42 | 2-10              | 1-3       | 1-4       | 1        | 3  | 4   | 4     | 3  | 6  | 4  | 2  | 0  | 0               | 1 | -2  |
| 2                     | Eveani Okwuosa    | G 32:45 | 1-5               | 0-1       | 0-0       | 2        | 1  | 3   | 3     | 1  | 2  | 2  | 2  | 0  | 0               | 1 | -10 |
| 23                    | Makaela Johnson   | G 13:51 | 2-6               | 1-3       | 0-0       | 1        | 2  | 3   | 2     | 1  | 5  | 1  | 3  | 1  | 0               | 0 | -8  |
| 32                    | Bianca Pendleton  | L 15:41 | 1-3               | 0-0       | 4-4       | 3        | 2  | 5   | 2     | 3  | 6  | 0  | 2  | 1  | 0               | 1 | 5   |
| 10                    | Nayeli Dowding    | 20:26   | 1-6               | 0-3       | 2-2       | 0        | 0  | 0   | 3     | 1  | 4  | 0  | 0  | 0  | 0               | 0 | 5   |
| 5                     | Charlotte Bassett | L 19:19 | 5-7               | 2-2       | 0-0       | 1        | 4  | 5   | 5     | 1  | 12 | 1  | 1  | 2  | 0               | 0 | 2   |
| Team                  |                   |         |                   |           |           | 5        |    |     | 2     | 7  |    | 0  | 3  |    |                 |   |     |
| Totals                |                   |         | 21:57             | 7-17      | 11-14     | 18       | 23 | 41  | 26    | 15 | 60 | 10 | 17 | 5  | 0               | 5 | -5  |
| Technical Fouls: NONE |                   |         |                   |           |           |          |    |     |       |    |    |    |    |    |                 |   |     |

|                  | SNH           | UNH          | Points from Turnovers | SNH | UNH | Period by Period Scoring |
|------------------|---------------|--------------|-----------------------|-----|-----|--------------------------|
| Biggest lead     | 9 (3rd 5:40)  | 2 (2nd 2:38) | 17                    | 9   |     | 1st2nd3rd4thTOT          |
| Best Scoring Run | 10 (3rd 8:04) | 6 (2nd 9:04) | 32                    | 26  |     |                          |
| Lead Changes     | 2             |              | Second Chance         | 3   | 12  | SNH 15 15 15 20 65       |
| Times Tied       | 6             |              | Fast Breaks           | 15  | 10  | UNH 13 12 14 21 60       |
| Time with Lead   | 36:06         | 00:08        | Bench                 | 4   | 22  |                          |

**New Haven vs Georgian Court**  
**Dec. 10, 2023 • West Haven, CT**

## Game 8

[illegible]

| New Haven - 74 |                       |         | Record: 3-5 |           |           |                       |                |    |    |    |    |                 |                       |    |    |    |  |
|----------------|-----------------------|---------|-------------|-----------|-----------|-----------------------|----------------|----|----|----|----|-----------------|-----------------------|----|----|----|--|
| NO.            | Name                  | Min     | FG<br>M-A   | 3P<br>M-A | FT<br>M-A | Rebounds<br>OR DR TOT | Fouls<br>PF FD | TP | AS | TO | St | Blocks<br>BS BA | +/-                   |    |    |    |  |
| 14             | Lindsay Hogan         | F 27:30 | 3-12        | 0-3       | 0-0       | 2                     | 10             | 12 | 1  | 6  | 3  | 1               | 0                     | 1  | +6 |    |  |
| 34             | Aurora Deshaies       | F 36:55 | 9-11        | 0-0       | 0-2       | 1                     | 10             | 11 | 2  | 4  | 18 | 2               | 1                     | 3  | 0  | 1  |  |
| 1              | Gabrielle Stickle     | G 28:16 | 1-2         | 0-1       | 4-5       | 0                     | 2              | 2  | 3  | 4  | 6  | 8               | 1                     | 4  | 0  | 20 |  |
| 2              | Evani Okwuosa         | G 31:51 | 4-7         | 0-1       | 0-0       | 1                     | 2              | 3  | 3  | 0  | 8  | 3               | 2                     | 2  | 1  | 0  |  |
| 5              | Charlotte Bassett     | G 30:34 | 9-16        | 2-7       | 2-2       | 0                     | 2              | 2  | 1  | 2  | 22 | 1               | 1                     | 3  | 0  | 25 |  |
| 12             | Sabrina Ahayaev       | 02:37   | 0-0         | 0-0       | 0-0       | 0                     | 0              | 0  | 0  | 0  | 1  | 1               | 0                     | 0  | 0  | 2  |  |
| 10             | Nayeli Dowding        | 23:45   | 5-12        | 0-4       | 1-1       | 0                     | 1              | 1  | 0  | 1  | 11 | 2               | 1                     | 0  | 0  | 8  |  |
| 23             | Makaels Johnson       | 13:05   | 1-2         | 1-2       | 0-0       | 0                     | 1              | 1  | 1  | 1  | 3  | 1               | 1                     | 0  | 2  | 0  |  |
| 44             | Ment Innocent         | 02:31   | 0-1         | 0-0       | 0-0       | 0                     | 0              | 0  | 0  | 0  | 0  | 0               | 0                     | 0  | 0  | -1 |  |
| 11             | Katelyn Simpson       | 01:44   | 0-0         | 0-0       | 0-0       | 0                     | 1              | 1  | 0  | 1  | 0  | 0               | 0                     | 0  | 0  | 2  |  |
| 21             | Sytliaanna Mantzouris | 01:14   | 0-1         | 0-0       | 0-0       | 0                     | 0              | 0  | 0  | 0  | 0  | 0               | 0                     | 0  | 0  | 0  |  |
| Team           |                       |         |             |           |           | 0                     | 1              | 1  |    |    | 0  | 0               |                       |    |    |    |  |
| Totals         |                       |         | 32-64       | 3-18      | 7-10      | 4                     | 30             | 34 | 11 | 14 | 74 | 21              | 9                     | 12 | 4  | 29 |  |
|                |                       |         |             |           |           |                       |                |    |    |    |    |                 | Technical Fouls: NONE |    |    |    |  |

|                  | GCU                       | UNH                       | Points from   | GCU | UNH | Period by Period Scoring |                 |                 |                 |     |    |
|------------------|---------------------------|---------------------------|---------------|-----|-----|--------------------------|-----------------|-----------------|-----------------|-----|----|
| Biggest lead     | 0 (1 <sup>st</sup> 10:00) | 30 (2 <sup>nd</sup> 6:46) | Turnovers     | 4   | 28  |                          |                 |                 |                 |     |    |
| Best Scoring Run | 7(2 <sup>nd</sup> 0:34)   | 9(1 <sup>st</sup> 5:20)   | Paint         | 30  | 44  | 1 <sup>st</sup>          | 2 <sup>nd</sup> | 3 <sup>rd</sup> | 4 <sup>th</sup> | TOT |    |
| Lead Changes     | 0                         |                           | Second Chance | 10  | 6   | GCU                      | 7               | 15              | 16              | 7   | 45 |
| Times Tied       | 0                         |                           | Fast Breaks   | 5   | 6   | UNH                      | 33              | 10              | 17              | 14  | 74 |
| Time with Lead   | 00:00                     | 39:43                     | Bench         | 5   | 14  |                          |                 |                 |                 |     |    |

## Game 9



Official Basketball Box Score - Final  
**Dist. Columbia at New Haven**  
 12/30/23 Charger Gymnasium, West Haven  
 2023-24 Women's Basketball

Game Time: 1:00 PM  
Game Duration: 1:31  
Attendance: 87

**Dist. Columbia - 63**

Record: 11-3

| NO.    | Name             |    | Min   | FG    |      | 3P  | FT  | Rebounds |     | Fouls |    | TP | AS | TO | ST | Blocks |     | +/- |
|--------|------------------|----|-------|-------|------|-----|-----|----------|-----|-------|----|----|----|----|----|--------|-----|-----|
|        |                  |    |       | M-A   | M-A  | M-A | OR  | DR       | TOT | PF    | FD |    |    |    |    | BS     | BA  |     |
| 1      | Tori Williams    | F  | 20:52 | 2-6   | 0-0  | 2-2 | 5-7 | 2        | 5   | 1     | 6  | 1  | 2  | 2  | 0  | 0      | 7   |     |
| 5      | Nia Ford         | F  | 29:14 | 3-13  | 2-6  | 0-0 | 6   | 6        | 6   | 2     | 1  | 8  | 0  | 0  | 0  | 0      | 2   |     |
| 20     | Aiyana Ellis     | 23 | 17:54 | 2-3   | 0-0  | 2-3 | 0   | 2        | 2   | 3     | 3  | 6  | 2  | 0  | 1  | 0      | 0   |     |
| 3      | Latavia Jackson  | G  | 32:26 | 7-17  | 1-3  | 3-3 | 2   | 2        | 5   | 1     | 18 | 2  | 0  | 0  | 0  | 1      | -11 |     |
| 4      | Destiny Ryles    | G  | 38:29 | 9-18  | 3-8  | 1   | 2   | 4        | 6   | 1     | 2  | 21 | 5  | 3  | 4  | 0      | 1   |     |
| 2      | Tania Hill       | 25 | 25:39 | 1-5   | 0-2  | 0-0 | 0   | 6        | 6   | 3     | 0  | 2  | 0  | 0  | 3  | 2      | 0   |     |
| 22     | Laci Johnson     | 19 | 19:35 | 1-8   | 0-6  | 0   | 1   | 2        | 3   | 2     | 1  | 2  | 1  | 1  | 0  | 0      | 2   |     |
| 23     | Shaneli Haskins  | 18 | 08:19 | 0-2   | 0-0  | 0   | 0   | 0        | 0   | 0     | 0  | 0  | 1  | 0  | 0  | 0      | -2  |     |
| 15     | Jada Bouknight   | 03 | 06:01 | 0-0   | 0-0  | 0   | 0   | 0        | 0   | 1     | 0  | 0  | 0  | 0  | 0  | 1      | 0   |     |
| 0      | Kensley Benjamin | 00 | 05:56 | 0-0   | 0-0  | 0   | 0   | 0        | 0   | 0     | 0  | 0  | 0  | 0  | 0  | 0      | -3  |     |
| 11     | Kristian Harris  | 03 | 30:30 | 0-0   | 0-0  | 0-0 | 0   | 0        | 0   | 1     | 0  | 0  | 0  | 0  | 0  | 0      | 0   |     |
| Team   |                  |    |       |       |      | 3   | 1   | 4        | 0   | 0     | 0  | 1  |    |    |    |        |     |     |
| Totals |                  |    |       | 25-73 | 6-27 | 7-9 | 16  | 23       | 39  | 19    | 13 | 63 | 12 | 7  | 10 | 3      | -4  |     |

**Technical Fouls::NONE**

**Officials:** Mike Hogan, Bobby Hope, Brian Alves

| Shooting By Period |             |            |  |
|--------------------|-------------|------------|--|
| 1 <sup>st</sup>    | FG%         | 6-18 33.3% |  |
|                    | 3PT%        | 0-5 0.0%   |  |
|                    | FT%         | 1-1 100%   |  |
| 2 <sup>nd</sup>    | FG%         | 4-17 23.5% |  |
|                    | 3PT%        | 0-6 0.0%   |  |
|                    | FT%         | 0-0 0%     |  |
| 3 <sup>rd</sup>    | FG%         | 7-17 41.2% |  |
|                    | 3PT%        | 2-6 33.3%  |  |
|                    | FT%         | 4-4 100%   |  |
| 4 <sup>th</sup>    | FG%         | 8-21 38.1% |  |
|                    | 3PT%        | 4-10 40.0% |  |
|                    | FT%         | 2-4 50%    |  |
| GM FG%             | 25-73 34.2% |            |  |
|                    | 3PT%        | 6-27 22.2% |  |
|                    | FT%         | 7-9 77.8%  |  |

Dead Ball Rebounds: 1, 1

New Haven - 67

Record: 4-5

| NO. Name |                    | Min     | FG    | 3P   | FT    | Rebounds |    |     | Fouls | TP | AS | TO | ST | BS | Blocks | +/- |   |
|----------|--------------------|---------|-------|------|-------|----------|----|-----|-------|----|----|----|----|----|--------|-----|---|
|          |                    |         | M-A   | M-A  | M-A   | OR       | DR | TOT | P     |    |    |    |    |    |        |     |   |
| 14       | Lindsay Hogan      | F 20:04 | 0-6   | 0-0  | 0     | 5        | 5  | 5   | 0     | 2  | 0  | 3  | 0  | 0  | 0      | -3  |   |
| 34       | Aurora Deshaies    | F 34:14 | 8-12  | 0-0  | 3-6   | 5        | 8  | 13  | 0     | 6  | 19 | 3  | 0  | 0  | 1      | 3   |   |
| 1        | Gabrielle Stickles | G 35:11 | 2-5   | 1-2  | 2-2   | 1        | 4  | 5   | 3     | 4  | 7  | 4  | 2  | 0  | 0      | 7   |   |
| 2        | Eveani Okwuosa     | G 22:34 | 4-5   | 1-1  | 1-2   | 1        | 2  | 3   | 1     | 1  | 10 | 0  | 2  | 2  | 1      | 7   |   |
| 5        | Charlotte Bassett  | G 34:18 | 5-9   | 2-4  | 2-2   | 0        | 5  | 5   | 0     | 3  | 14 | 3  | 6  | 1  | 0      | 1   |   |
| 10       | Nayeli Dowding     | 23:48   | 2-10  | 2-5  | 1-2   | 0        | 2  | 2   | 1     | 2  | 7  | 2  | 1  | 0  | 0      | -4  |   |
| 23       | Makaela Johnson    | 24:05   | 3-6   | 1-3  | 1-2   | 1        | 5  | 6   | 5     | 1  | 9  | 1  | 0  | 0  | 0      | 8   |   |
| 32       | Bianca Pendleton   | 05:46   | 0-1   | 0-0  | 1-2   | 0        | 1  | 1   | 1     | 2  | 1  | 0  | 1  | 0  | 1      | 1   |   |
| Team     |                    |         |       |      |       | 3        | 1  | 4   |       |    | 0  | 0  |    |    |        |     |   |
| Totals   |                    |         | 24-54 | 7-21 | 12-18 | 11       | 33 | 44  | 13    | 19 | 67 | 13 | 15 | 3  | 2      | 3   | 4 |

**Technical Fouls::NONE**

| Shooting By Period |       |       |       |
|--------------------|-------|-------|-------|
| 1 <sup>st</sup>    | FG%   | 5-12  | 41.7% |
|                    | 3PT%  | 2-4   | 50.0% |
|                    | FT%   | 3-4   | 75%   |
| 2 <sup>nd</sup>    | FG%   | 5-15  | 33.3% |
|                    | 3PT%  | 2-8   | 25.0% |
|                    | FT%   | 0-1   | 0%    |
| 3 <sup>rd</sup>    | FG%   | 6-12  | 50.0% |
|                    | 3PT%  | 1-4   | 25.0% |
|                    | FT%   | 4-6   | 66.7% |
| 4 <sup>th</sup>    | FG%   | 8-15  | 53.3% |
|                    | 3PT%  | 2-5   | 40.0% |
|                    | FT%   | 5-7   | 71.4% |
| GM FG%             | 24-54 | 44.4% |       |
|                    | 3PT%  | 7-21  | 33.3% |
|                    | FT%   | 12-18 | 66.7% |

Dead Ball Rebounds: 1, 0

| UDC              |                          | UNH                       | Points from   |    | UDC | UNH | Period by Period Scoring |     |     |     |     |    |
|------------------|--------------------------|---------------------------|---------------|----|-----|-----|--------------------------|-----|-----|-----|-----|----|
| Biggest lead     | 3 (1 <sup>st</sup> 1:20) | 10 (2 <sup>nd</sup> 2:25) | Turnovers     | 10 | 8   |     | 1st                      | 2nd | 3rd | 4th | TOT |    |
| Best Scoring Run | 7(4 <sup>th</sup> 8:54)  | 9(2 <sup>nd</sup> 7:24)   | Paint         | 32 | 28  |     | UDC                      | 13  | 8   | 20  | 22  | 63 |
| Lead Changes     |                          | 8                         | Second Chance | 13 | 14  |     | UNH                      | 15  | 12  | 17  | 23  | 67 |
| Times Tied       | 6                        |                           | Fast Breaks   | 13 | 2   |     |                          |     |     |     |     |    |
| Time with Lead   | 02:59                    | 32:50                     | Bench         | 4  | 17  |     |                          |     |     |     |     |    |

**New Haven at American International**  
**Jan. 6, 2024 • Springfield, MA**

# Game 11



Official Basketball Box Score - Final  
**New Haven at Saint Michael's**  
 01/03/24 Ross Sports Center, Colchester, VT  
 2023-24 Women's Basketball

Game Time: 5:30 PM  
Game Duration: 1:24  
Attendance: 173

New Haven - 61

Record: 5-5 (1-5)

| No.    | Name              |   | Min   | FG<br>M-A | 3P<br>M-A | FT<br>M-A | Rebounds<br>OR DR TOT | Fouls<br>PF TT | TP | AS | TB | Blocks<br>ST BS | +/- |
|--------|-------------------|---|-------|-----------|-----------|-----------|-----------------------|----------------|----|----|----|-----------------|-----|
| 14     | Lindsay Hogan     | F | 27:13 | 5-13      | 4-9       | 0-0       | 1 3 4                 | 3 0            | 14 | 3  | 0  | 1 3 0           | 13  |
| 34     | Aurora Deshailes  | F | 16:51 | 2-7       | 0-0       | 1-2       | 1 2 3                 | 3 1            | 5  | 0  | 2  | 0 1 0           | 8   |
| 1      | Gabrielle Stickle | G | 38:34 | 1-6       | 1-3       | 0-0       | 0 5 5                 | 2 2            | 3  | 6  | 3  | 0 1 1           | 17  |
| 2      | Eveani Okwuosa    | G | 11:25 | 1-1       | 0-0       | 0-0       | 2 0 2                 | 1 0            | 2  | 2  | 2  | 2 1 0           | -3  |
| 5      | Charlotte Bassett | G | 39:49 | 4-9       | 1-2       | 0-0       | 1 3 4                 | 1 0            | 9  | 3  | 1  | 0 0 2           | 18  |
| 23     | Makaela Johnson   |   | 15:58 | 1-5       | 0-4       | 0 0 8     | 8 8                   | 1 0            | 2  | 1  | 2  | 0 0 0           | 5   |
| 32     | Bianca Pendleton  |   | 27:22 | 6-9       | 0-0       | 2-2       | 2 3 5                 | 2 3            | 14 | 1  | 1  | 2 0 0           | 9   |
| 10     | Nayeli Dowling    |   | 22:44 | 4-9       | 2-4       | 2-2       | 2 3 4                 | 2 1            | 12 | 1  | 1  | 0 0 0           | 13  |
| Team   |                   |   |       |           |           | 2         | 1 3 0                 |                |    |    | 0  |                 |     |
| Totals |                   |   |       | 24-57     | 8-22      | 5-6       | 12 26 38              | 14 8           | 61 | 17 | 13 | 6 6 3           | 16  |

**Technical Fouls::NONE**

**Officials:** Andy Guay, Ellie Knights, Martina Nikolova-Graffam

| Shooting By Period |      |       |       |
|--------------------|------|-------|-------|
| 1 <sup>st</sup>    | FG%  | 5-14  | 35.7% |
|                    | 3PT% | 3-7   | 42.9% |
|                    | FT%  | 1-2   | 50%   |
| 2 <sup>nd</sup>    | FG%  | 8-12  | 66.7% |
|                    | 3PT% | 2-4   | 50.0% |
|                    | FT%  | 2-2   | 100%  |
| 3 <sup>rd</sup>    | FG%  | 5-14  | 35.7% |
|                    | 3PT% | 1-5   | 20.0% |
|                    | FT%  | 2-2   | 100%  |
| 4 <sup>th</sup>    | FG%  | 6-17  | 35.3% |
|                    | 3PT% | 2-6   | 33.3% |
|                    | FT%  | 0-0   | 0%    |
| GM                 | FG%  | 24-57 | 42.1% |
|                    | 3PT% | 8-22  | 36.4% |
|                    | FT%  | 5-6   | 83.3% |

**Dead Ball Rebounds: 2, 0**

**Saint Michael's - 45**

Record: 4-8 (0-6)

| No.    | Name          | Min     | FG<br>M-A | 3P<br>M-A | FT<br>M-A | Rebounds<br>OR DR TOT | Fouls<br>F T | TP | AS | TS | SB | Blocks | +/-  |   |   |   |     |
|--------|---------------|---------|-----------|-----------|-----------|-----------------------|--------------|----|----|----|----|--------|------|---|---|---|-----|
| 14     | Kelly Laggis  | F 20:23 | 5-10      | 0-2       | 0-2       | 1 2 3                 | 3 2          | 10 | 1  | 3  | 1  | 0      | 2 -9 |   |   |   |     |
| 21     | Makayia Blake | F 23:35 | 2-5       | 0-1       | 6-8       | 1 2 3                 | 0 5          | 10 | 2  | 1  | 0  | 0      | -8   |   |   |   |     |
| 24     | Paige Salas   | G 20:26 | 1-5       | 0-3       | 0 0       | 0 0 0                 | 0 1          | 2  | 0  | 0  | 0  | 0      | -13  |   |   |   |     |
| 33     | Amber Furch   | G 31:32 | 3-12      | 3-6       | 2-2       | 1 4 5                 | 1 3          | 11 | 2  | 3  | 2  | 0      | -14  |   |   |   |     |
| 40     | Brianna Furch | G 29:22 | 2-6       | 1-3       | 0 0       | 1 3 4                 | 1 0          | 5  | 4  | 3  | 2  | 3      | -12  |   |   |   |     |
| 12     | Jaxson Nadeau | 11:15   | 0-1       | 0-1       | 0 0       | 1 1                   | 1 0          | 0  | 1  | 1  | 0  | 0      | -4   |   |   |   |     |
| 20     | Ruby Santos   | 08:14   | 0-0       | 0 0       | 0 2       | 2 2                   | 0 0          | 0  | 1  | 0  | 0  | 0      | -9   |   |   |   |     |
| 22     | Molly Brophy  | 19:42   | 1-4       | 0-2       | 0 0       | 2 2                   | 1 0          | 2  | 1  | 0  | 0  | 0      | -7   |   |   |   |     |
| 42     | Julie Lyden   | 11:48   | 2-5       | 0 0       | 1-2       | 1 0                   | 1 3          | 5  | 0  | 0  | 0  | 0      | -6   |   |   |   |     |
| 10     | Bella Franchi | 07:43   | 0-3       | 0-1       | 0 0       | 2 2                   | 0 0          | 0  | 0  | 0  | 0  | 0      | 2    |   |   |   |     |
| Team   |               |         | 3 4 7     |           |           | 0                     |              |    |    |    |    |        |      |   |   |   |     |
| Totals |               |         | 16-51     | 4-19      | 9-14      | 10                    | 20           | 30 | 8  | 14 | 45 | 13     | 2    | 5 | 3 | 6 | -16 |

**Technical Fouls::**NONE

| Shooting By Period |      |       |       |
|--------------------|------|-------|-------|
| 1 <sup>st</sup>    | FG%  | 5-13  | 38.5% |
|                    | 3PT% | 0-3   | 0.0%  |
|                    | FT%  | 1-2   | 50%   |
| 2 <sup>nd</sup>    | FG%  | 6-15  | 40.0% |
|                    | 3PT% | 2-6   | 33.3% |
|                    | FT%  | 0-0   | 0%    |
| 3 <sup>rd</sup>    | FG%  | 2-10  | 20.0% |
|                    | 3PT% | 2-4   | 50.0% |
|                    | FT%  | 3-6   | 50%   |
| 4 <sup>th</sup>    | FG%  | 3-13  | 23.1% |
|                    | 3PT% | 0-6   | 0.0%  |
|                    | FT%  | 5-6   | 83.3% |
| GM                 | FG%  | 16-51 | 31.4% |
|                    | 3PT% | 4-19  | 21.1% |
|                    | FT%  | 9-14  | 64.3% |

**Dead Ball Rebounds: 4, 0**

|                  | UNH                       | SMC                      | Points from   | UNH | SMC | Period by Period Scoring |     |     |     |     |     |
|------------------|---------------------------|--------------------------|---------------|-----|-----|--------------------------|-----|-----|-----|-----|-----|
| Biggest lead     | 18 (4 <sup>th</sup> 7:27) | 2 (1 <sup>st</sup> 9:14) | Turnovers     | 11  | 10  |                          | 1st | 2nd | 3rd | 4th | TOT |
| Best Scoring Run | 10(2 <sup>nd</sup> 1:17)  | 6(2 <sup>nd</sup> 9:29)  | Paint         | 30  | 18  | UNH                      | 14  | 20  | 13  | 14  | 61  |
| Lead Changes     | 3                         |                          | Second Chance | 11  | 5   | SMC                      | 11  | 14  | 9   | 11  | 45  |
| Times Tied       | 3                         |                          | Fast Breaks   | 0   | 3   |                          |     |     |     |     |     |
| Time with Lead   | 36:25                     | 02:11                    | Bench         | 28  | 7   |                          |     |     |     |     |     |

**New Haven vs Southern Connecticut**  
**Jan. 10, 2024 • West Haven, CT**

## Game 12

# GAME 11: NEW HAVEN AT AMERICAN INTERNATIONAL

## POINTS - REBOUNDS - ASSISTS

| Opponent            | Date     | Score   | 1<br>Stickie | 2<br>Okwuosa | 3<br>Townes | 5<br>Bassett | 10<br>Dowding | 11<br>Simpson | 12<br>Ahayeva | 14<br>Hogan |
|---------------------|----------|---------|--------------|--------------|-------------|--------------|---------------|---------------|---------------|-------------|
| vs Wilmington       | 11.10.23 | W 81-21 | 2 - 0 - 5    | 2 - 3 - 1    | INJ         | 5 - 2 - 1    | 2 - 2 - 1     | 4 - 2 - 1     | 2 - 1 - 0     | 30 - 3 - 2  |
| at Goldey-Beacom    | 11.11.23 | W 85-57 | 6 - 6 - 8    | 2 - 1 - 0    | INJ         | 0 - 5 - 1    | 14 - 4 - 1    | 0 - 0 - 1     | 0 - 0 - 0     | 22 - 4 - 0  |
| at Bentley          | 11.15.23 | 48-59 L | 6 - 1 - 2    | 0 - 1 - 0    | INJ         | 2 - 1 - 0    | 11 - 6 - 0    | DNP           | DNP           | 8 - 5 - 2   |
| PACE                | 11.21.23 | 43-46 L | 11 - 2 - 2   | 3 - 2 - 0    | INJ         | 9 - 4 - 2    | 2 - 1 - 2     | DNP           | DNP           | 8 - 9 - 1   |
| at Assumption       | 11.29.23 | 41-70 L | 2 - 3 - 1    | 6 - 4 - 1    | INJ         | 0 - 0 - 0    | 8 - 5 - 0     | 0 - 0 - 1     | DNP           | 13 - 2 - 3  |
| SO NEW HAMPSHIRE    | 12.02.23 | 60-65 L | 6 - 4 - 4    | 2 - 3 - 2    | INJ         | 12 - 5 - 1   | 4 - 0 - 0     | DNP           | DNP           | 19 - 8 - 1  |
| ADELPHI             | 12.05.23 | 49-56 L | 7 - 6 - 3    | 2 - 1 - 0    | INJ         | 6 - 7 - 3    | 7 - 2 - 0     | DNP           | DNP           | 7 - 4 - 0   |
| GEORGIAN COURT      | 12.10.23 | W 74-45 | 6 - 2 - 8    | 8 - 3 - 3    | INJ         | 22 - 2 - 1   | 11 - 1 - 2    | 0 - 1 - 0     | 0 - 0 - 1     | 6 - 12 - 3  |
| UDC                 | 12.30.23 | W 67-60 | 7 - 5 - 4    | 10 - 3 - 0   | INJ         | 14 - 5 - 3   | 7 - 2 - 2     | DNP           | DNP           | 0 - 5 - 0   |
| at Saint Michael's  | 01.03.24 | W 61-45 | 3 - 5 - 6    | 2 - 2 - 2    | INJ         | 9 - 4 - 3    | 12 - 4 - 1    | DNP           | DNP           | 14 - 4 - 3  |
| at American Int'l   | 01.06.24 |         |              |              |             |              |               |               |               |             |
| SO CONNECTICUT      | 01.10.24 |         |              |              |             |              |               |               |               |             |
| SAINT ANSELM        | 01.13.24 |         |              |              |             |              |               |               |               |             |
| at Franklin Pierce  | 01.16.24 |         |              |              |             |              |               |               |               |             |
| SAINT ROSE          | 01.20.24 |         |              |              |             |              |               |               |               |             |
| at Pace             | 01.24.24 |         |              |              |             |              |               |               |               |             |
| BENTLEY             | 01.27.24 |         |              |              |             |              |               |               |               |             |
| ASSUMPTION          | 01.30.24 |         |              |              |             |              |               |               |               |             |
| at So New Hampshire | 02.03.24 |         |              |              |             |              |               |               |               |             |
| at Adelphi          | 02.07.24 |         |              |              |             |              |               |               |               |             |
| SAINT MICHAEL'S     | 02.10.24 |         |              |              |             |              |               |               |               |             |
| at So Connecticut   | 02.13.24 |         |              |              |             |              |               |               |               |             |
| AMERICAN INT'L      | 02.17.24 |         |              |              |             |              |               |               |               |             |
| at Saint Anselm     | 02.21.24 |         |              |              |             |              |               |               |               |             |
| at Saint Rose       | 02.24.24 |         |              |              |             |              |               |               |               |             |
| FRANKLIN PIERCE     | 02.27.24 |         |              |              |             |              |               |               |               |             |

| Opponent            | Date     | Score   | 15<br>Bacaliu | 21<br>Mantzouris | 23<br>Johnson | 32<br>Pendelton | 34<br>Deshaies | 44<br>Innocent |
|---------------------|----------|---------|---------------|------------------|---------------|-----------------|----------------|----------------|
| vs Wilmington       | 11.10.23 | W 81-21 | INJ           | 2 - 0 - 0        | 11 - 10 - 3   | 7 - 2 - 0       | 14 - 9 - 2     | 0 - 1 - 0      |
| at Goldey-Beacom    | 11.11.23 | W 85-57 | INJ           | 0 - 0 - 0        | 16 - 9 - 4    | 8 - 2 - 0       | 17 - 13 - 0    | 0 - 1 - 0      |
| at Bentley          | 11.15.23 | 48-59 L | INJ           | DNP              | 2 - 2 - 1     | 2 - 2 - 1       | 17 - 11 - 0    | DNP            |
| PACE                | 11.21.23 | 43-46 L | INJ           | DNP              | 4 - 3 - 1     | 2 - 4 - 2       | 4 - 7 - 0      | 0 - 0 - 0      |
| at Assumption       | 11.29.23 | 41-70 L | INJ           | DNP              | 2 - 3 - 0     | 4 - 1 - 0       | 6 - 12 - 2     | DNP            |
| SO NEW HAMPSHIRE    | 12.02.23 | 60-65 L | INJ           | DNP              | 5 - 3 - 1     | 6 - 5 - 0       | 6 - 6 - 1      | DNP            |
| ADELPHI             | 12.05.23 | 49-56 L | INJ           | DNP              | 2 - 3 - 0     | 2 - 2 - 0       | 16 - 12 - 1    | DNP            |
| GEORGIAN COURT      | 12.10.23 | W 74-45 | INJ           | 0 - 0 - 0        | 3 - 1 - 1     | DNP             | 18 - 11 - 2    | 0 - 0 - 0      |
| UDC                 | 12.30.23 | W 67-60 | INJ           | DNP              | 9 - 6 - 1     | 1 - 1 - 0       | 19 - 13 - 3    | DNP            |
| at Saint Michael's  | 01.03.24 | W 61-45 | INJ           | DNP              | 2 - 8 - 1     | 14 - 5 - 1      | 5 - 3 - 0      | DNP            |
| at American Int'l   | 01.06.24 |         |               |                  |               |                 |                |                |
| SO CONNECTICUT      | 01.10.24 |         |               |                  |               |                 |                |                |
| SAINT ANSELM        | 01.13.24 |         |               |                  |               |                 |                |                |
| at Franklin Pierce  | 01.16.24 |         |               |                  |               |                 |                |                |
| SAINT ROSE          | 01.20.24 |         |               |                  |               |                 |                |                |
| at Pace             | 01.24.24 |         |               |                  |               |                 |                |                |
| BENTLEY             | 01.27.24 |         |               |                  |               |                 |                |                |
| ASSUMPTION          | 01.30.24 |         |               |                  |               |                 |                |                |
| at So New Hampshire | 02.03.24 |         |               |                  |               |                 |                |                |
| at Adelphi          | 02.07.24 |         |               |                  |               |                 |                |                |
| SAINT MICHAEL'S     | 02.10.24 |         |               |                  |               |                 |                |                |
| at So Connecticut   | 02.13.24 |         |               |                  |               |                 |                |                |
| AMERICAN INT'L      | 02.17.24 |         |               |                  |               |                 |                |                |
| at Saint Anselm     | 02.21.24 |         |               |                  |               |                 |                |                |
| at Saint Rose       | 02.24.24 |         |               |                  |               |                 |                |                |
| FRANKLIN PIERCE     | 02.27.24 |         |               |                  |               |                 |                |                |

GAME 11: NEW HAVEN AT AMERICAN INTERNATIONAL

NEW HAVEN/OPPONENT GAME-BY-GAME STATISTICS

| DATE  | OPPONENT            | FG-FGA | PCT. | 3P-3PA | PCT. | FT-FTA | PCT.  | OR-DR-RB | A  | TO | B | S  | PTS |
|-------|---------------------|--------|------|--------|------|--------|-------|----------|----|----|---|----|-----|
| 11/10 | New Haven           | 30-50  | .600 | 6-8    | .750 | 15-21  | .714  | 13-24-37 | 16 | 13 | 4 | 14 | 81  |
|       | vs. Wilmington      | 8-48   | .167 | 1-18   | .056 | 4-8    | .500  | 15-12-27 | 1  | 23 | 1 | 7  | 21  |
| 11/11 | New Haven           | 31-68  | .456 | 7-15   | .467 | 16-23  | .696  | 20-30-50 | 15 | 9  | 3 | 5  | 85  |
|       | at Goldey-Beacom    | 20-54  | .370 | 10-26  | .385 | 7-14   | .500  | 8-21-29  | 12 | 15 | 3 | 2  | 57  |
| 11/15 | New Haven           | 22-60  | .367 | 2-13   | .154 | 2-4    | .500  | 11-22-33 | 6  | 14 | 4 | 6  | 48  |
|       | at Bentley          | 21-53  | .396 | 4-17   | .235 | 13-13  | 1.000 | 9-28-37  | 14 | 13 | 2 | 8  | 59  |
| 11/21 | NEW HAVEN           | 18-49  | .367 | 4-21   | .190 | 3-6    | .500  | 7-28-35  | 10 | 16 | 1 | 3  | 43  |
|       | PACE                | 19-52  | .365 | 1-13   | .077 | 7-12   | .583  | 7-26-33  | 9  | 10 | 2 | 7  | 46  |
| 11/29 | New Haven           | 18-60  | .300 | 4-20   | .200 | 1-8    | .125  | 16-18-34 | 8  | 18 | 0 | 9  | 41  |
|       | at Assumption       | 25-47  | .532 | 6-20   | .300 | 14-16  | .875  | 4-29-33  | 22 | 14 | 4 | 5  | 70  |
| 12/2  | NEW HAVEN           | 21-57  | .368 | 7-15   | .467 | 11-14  | .786  | 18-23-41 | 10 | 17 | 0 | 5  | 60  |
|       | SO NEW HAMPSHIRE    | 23-42  | .548 | 6-13   | .462 | 13-27  | .481  | 3-20-23  | 16 | 11 | 5 | 4  | 65  |
| 12/5  | NEW HAVEN           | 16-50  | .320 | 2-9    | .222 | 15-22  | .682  | 13-26-39 | 7  | 17 | 2 | 4  | 49  |
|       | ADELPHI             | 24-60  | .400 | 3-13   | .231 | 5-12   | .417  | 14-25-39 | 8  | 13 | 1 | 9  | 56  |
| 12/10 | NEW HAVEN           | 32-64  | .500 | 3-18   | .167 | 7-10   | .700  | 4-30-34  | 21 | 9  | 4 | 12 | 74  |
|       | GEORGIAN COURT      | 20-58  | .345 | 3-13   | .231 | 2-6    | .333  | 10-30-40 | 6  | 22 | 2 | 7  | 45  |
| 12/30 | NEW HAVEN           | 24-54  | .444 | 7-21   | .333 | 12-18  | .667  | 11-33-44 | 13 | 15 | 2 | 3  | 67  |
|       | UDC                 | 25-73  | .342 | 6-27   | .222 | 7-9    | .778  | 16-23-39 | 12 | 7  | 3 | 10 | 63  |
| 1/3   | New Haven           | 24-57  | .421 | 8-22   | .364 | 5-6    | .833  | 12-26-38 | 17 | 13 | 6 | 6  | 61  |
|       | at Saint Michael's  | 16-51  | .314 | 4-19   | .211 | 9-14   | .643  | 10-20-30 | 13 | 12 | 3 | 5  | 45  |
| 1/6   | New Haven           |        |      |        |      |        |       |          |    |    |   |    |     |
|       | at American Int'l   |        |      |        |      |        |       |          |    |    |   |    |     |
| 1/10  | NEW HAVEN           |        |      |        |      |        |       |          |    |    |   |    |     |
|       | SO CONNECTICUT      |        |      |        |      |        |       |          |    |    |   |    |     |
| 1/13  | NEW HAVEN           |        |      |        |      |        |       |          |    |    |   |    |     |
|       | SAINT ANSELM        |        |      |        |      |        |       |          |    |    |   |    |     |
| 1/16  | New Haven           |        |      |        |      |        |       |          |    |    |   |    |     |
|       | at Franklin Pierce  |        |      |        |      |        |       |          |    |    |   |    |     |
| 1/20  | NEW HAVEN           |        |      |        |      |        |       |          |    |    |   |    |     |
|       | SAINT ROSE          |        |      |        |      |        |       |          |    |    |   |    |     |
| 1/24  | New Haven           |        |      |        |      |        |       |          |    |    |   |    |     |
|       | at Pace             |        |      |        |      |        |       |          |    |    |   |    |     |
| 1/27  | NEW HAVEN           |        |      |        |      |        |       |          |    |    |   |    |     |
|       | BENTLEY             |        |      |        |      |        |       |          |    |    |   |    |     |
| 1/30  | NEW HAVEN           |        |      |        |      |        |       |          |    |    |   |    |     |
|       | ASSUMPTION          |        |      |        |      |        |       |          |    |    |   |    |     |
| 2/3   | New Haven           |        |      |        |      |        |       |          |    |    |   |    |     |
|       | at So New Hampshire |        |      |        |      |        |       |          |    |    |   |    |     |
| 2/7   | New Haven           |        |      |        |      |        |       |          |    |    |   |    |     |
|       | at Adelphi          |        |      |        |      |        |       |          |    |    |   |    |     |
| 2/10  | NEW HAVEN           |        |      |        |      |        |       |          |    |    |   |    |     |
|       | SAINT MICHAEL'S     |        |      |        |      |        |       |          |    |    |   |    |     |
| 2/13  | New Haven           |        |      |        |      |        |       |          |    |    |   |    |     |
|       | at So Connecticut   |        |      |        |      |        |       |          |    |    |   |    |     |
| 2/17  | NEW HAVEN           |        |      |        |      |        |       |          |    |    |   |    |     |
|       | AMERICAN INT'L      |        |      |        |      |        |       |          |    |    |   |    |     |
| 2/21  | New Haven           |        |      |        |      |        |       |          |    |    |   |    |     |
|       | vs. Saint Anselm    |        |      |        |      |        |       |          |    |    |   |    |     |
| 2/24  | New Haven           |        |      |        |      |        |       |          |    |    |   |    |     |
|       | at Saint Rose       |        |      |        |      |        |       |          |    |    |   |    |     |
| 2/27  | NEW HAVEN           |        |      |        |      |        |       |          |    |    |   |    |     |
|       | FRANKLIN PIERCE     |        |      |        |      |        |       |          |    |    |   |    |     |



GAME 11: NEW HAVEN AT AMERICAN INTERNATIONAL

2023-24 FINAL SEASON STATISTICS

|                 |                      | RECORD         |           | OVERALL         |      |                 |      | HOME          |      | AWAY               |     |      | NEUTRAL |     |     |     |     |     |      |
|-----------------|----------------------|----------------|-----------|-----------------|------|-----------------|------|---------------|------|--------------------|-----|------|---------|-----|-----|-----|-----|-----|------|
|                 |                      | ALL GAMES      |           | 5-5             |      |                 |      | 2-3           |      | 2-2                |     |      | 1-0     |     |     |     |     |     |      |
|                 |                      | CONFERENCE     |           | 1-5             |      |                 |      | 0-3           |      | 1-2                |     |      | 0-0     |     |     |     |     |     |      |
|                 |                      | NON-CONFERENCE |           | 4-0             |      |                 |      | 2-0           |      | 1-0                |     |      | 1-0     |     |     |     |     |     |      |
|                 |                      |                |           | -----Total----- |      | ----3-Point---- |      | ---F-Throw--- |      | -----Rebounds----- |     |      |         |     |     |     |     |     |      |
| #               | Player               | GP-GS          | Min--Avg  | FG-FGA          | Pct  | 3FG-FGA         | Pct  | FT-FTA        | Pct  | Off-Def            | Tot | Avg  | PF      | A   | TO  | Blk | Stl | Pts | Avg  |
| 14              | Lindsay Hogan        | 10-10          | 320--32.0 | 47-109          | .431 | 20-49           | .408 | 13-15         | .867 | 9-47               | 56  | 5.6  | 26      | 15  | 24  | 6   | 7   | 127 | 12.7 |
| 34              | Aurora Deshaies      | 10-10          | 262--26.2 | 54-111          | .486 | 0-0             | .000 | 14-33         | .424 | 45-52              | 97  | 9.7  | 24      | 11  | 17  | 5   | 7   | 122 | 12.2 |
| 5               | Charlotte Bassett    | 10-6           | 241--24.1 | 31-69           | .449 | 8-23            | .348 | 9-12          | .750 | 11-24              | 35  | 3.5  | 13      | 15  | 14  | 0   | 9   | 79  | 7.9  |
| 10              | Nayeli Dowding       | 10-2           | 240--24.0 | 30-86           | .349 | 8-31            | .258 | 10-12         | .833 | 8-19               | 27  | 2.7  | 17      | 9   | 9   | 1   | 5   | 78  | 7.8  |
| 23              | Makaela Johnson      | 10-7           | 216--21.6 | 22-60           | .367 | 5-25            | .200 | 7-10          | .700 | 7-41               | 48  | 4.8  | 19      | 13  | 18  | 3   | 4   | 56  | 5.6  |
| 1               | Gabrielle Stickle    | 10-10          | 353--35.3 | 17-64           | .266 | 7-28            | .250 | 15-20         | .750 | 2-32               | 34  | 3.4  | 20      | 43  | 19  | 1   | 17  | 56  | 5.6  |
| 32              | Bianca Pendleton     | 9-0            | 129--14.3 | 15-27           | .556 | 0-1             | .000 | 16-23         | .696 | 11-13              | 24  | 2.7  | 22      | 4   | 12  | 1   | 6   | 46  | 5.1  |
| 2               | Eveani Okwusa        | 10-5           | 188--18.8 | 17-34           | .500 | 2-5             | .400 | 1-3           | .333 | 7-16               | 23  | 2.3  | 14      | 9   | 8   | 8   | 12  | 37  | 3.7  |
| 11              | Katelyn Simpson      | 4-0            | 22--5.5   | 2-5             | .400 | 0-0             | .000 | 0-0           | .000 | 1-2                | 3   | 0.8  | 2       | 3   | 3   | 1   | 0   | 4   | 1.0  |
| 12              | Sabrina Ahayeva      | 3-0            | 8--2.5    | 0-0             | .000 | 0-0             | .000 | 2-4           | .500 | 0-1                | 1   | 0.3  | 0       | 1   | 2   | 0   | 0   | 2   | 0.7  |
| 21              | Sytlianna Mantzouris | 3-0            | 6--2.1    | 1-2             | .000 | 0-0             | .000 | 0-0           | .000 | 0-0                | 0   | 0.0  | 1       | 0   | 1   | 0   | 0   | 2   | 0.7  |
| 44              | Merit Innocent       | 4-0            | 16--4.0   | 0-2             | .000 | 0-0             | .000 | 0-0           | .000 | 1-1                | 2   | 0.5  | 1       | 0   | 2   | 0   | 0   | 0   | 0.0  |
| TEAM            |                      |                |           |                 |      |                 |      |               |      | 23-12              | 35  | 3.5  |         |     | 12  |     |     |     |      |
| NEW HAVEN TOTAL |                      | 10             |           | 236-569         | .415 | 50-162          | .309 | 87-132        | .659 | 125-260            | 385 | 38.5 | 159     | 123 | 141 | 26  | 67  | 609 | 60.9 |
| OPPONENTS TOTAL |                      | 10             |           | 201-538         | .374 | 44-179          | .246 | 81-131        | .618 | 96-234             | 330 | 33.0 | 153     | 113 | 140 | 26  | 64  | 527 | 52.7 |

|                            | New Haven | Opponent | Date  | Opponent             | Score   | Att. |
|----------------------------|-----------|----------|---|----------------------|---------|------|
| SCORING                    | 609       | 527      | # 11/10/23  | vs Wilmington        | W 81-21 | 175  |
| Points Per Game            | 60.9      | 52.7     | # 11/11/23  | at Goldey-Beacom     | W 85-57 | 115  |
| Scoring Margin             | +8.2      | -        | * 11/15/23  | at Bentley           | L 48-59 | 210  |
| FIELD GOALS-ATT            | 236-569   | 201-538  | * 11/21/23  | PACE                 | L 43-46 | 138  |
| Field Goals pct            | .415      | .374     | * 11/29/23  | at Assumption        | L 41-70 | 170  |
| 3-POINT FG-ATT             | 50-162    | 44-179   | * 12/02/23  | SO NEW HAMPSHIRE     | L 60-65 | 167  |
| 3-point FG pct             | .309      | .246     | * 12/05/23  | ADELPHI              | L 49-56 | 165  |
| 3-point FG made per game   | 5.0       | 4.4      | 12/17/23  | GEORGIAN COURT       | W 74-45 | 64   |
| FREE THROWS-ATT            | 87-132    | 81-131   | 12/30/23  | DISTRICT OF COLUMBIA | W 67-60 | 87   |
| Free Throw pct             | .659      | .618     | * 01/03/23  | at Saint Michael's   | W 61-45 | 173  |
| F-Throws made per game     | 8.7       | 8.1      | # - Goldey-Beacom Tip-off Tournament (Wilmington, Del.) |                      |         |      |
| REBOUNDS                   | 385       | 330      | * - Northeast-10 Conference Game                        |                      |         |      |
| Rebounds per game          | 38.5      | 33.0     | ^ - NE10 Championship at high seed throughout           |                      |         |      |
| Rebounding Margin          | +5.5      | -        |   |                      |         |      |
| ASSISTS                    | 123       | 113      |   |                      |         |      |
| Assists per game           | 12.3      | 11.3     |   |                      |         |      |
| TURNOVERS                  | 141       | 140      |   |                      |         |      |
| Turnovers per game         | 14.1      | 14.0     |   |                      |         |      |
| Turnover Margin            | -0.1      | -        |   |                      |         |      |
| Assist/Turnover Ratio      | 0.9       | 0.8      |   |                      |         |      |
| STEALS                     | 67        | 64       |   |                      |         |      |
| Steals per game            | 6.7       | 6.4      |   |                      |         |      |
| BLOCKS                     | 26        | 26       |   |                      |         |      |
| Blocks per game            | 2.6       | 2.6      |   |                      |         |      |
| ATTENDANCE                 | 621       |          |   |                      |         |      |
| Home Games avg. per game   | 5-124     | 4-167    |   |                      |         |      |
| Neutral site avg. per game |           | 1-175    |   |                      |         |      |

| Score by Periods | 1st | 2nd | 3rd | 4th | OT | Totals |
|------------------|-----|-----|-----|-----|----|--------|
| New Haven        | 156 | 159 | 159 | 135 | -- | 609    |
| Opponents        | 134 | 113 | 129 | 151 | -- | 527    |